



SALT LAKE CITY - HQ
524 SOUTH 600 EAST
SALT LAKE CITY, UT
801.575.8800
VCBO.COM

ST. GEORGE
20 N. MAIN ST. #103
ST. GEORGE, UT
435.522.7070

CLIENT INFORMATION

TODD PLAGA
SALT LAKE CITY SCHOOL
DISTRICT
todd.plaga@slcschools.org

995 W. BEARDSLEY PLACE
SALT LAKE CITY, UT 84119
801.578.8599

ARCHITECT

ALEX BOOTH
VCBO ARCHITECTURE
aboath@vcbo.com

524 SOUTH 600 EAST
SALT LAKE CITY, UT 84102
801.575.8800

MTN VIEW ELEM - NEW AFTER SCHOOL SPACE

PHASE 1

1380 NAVAJO St #1330, SALT LAKE CITY, UT 84104
SALT LAKE CITY SCHOOL DISTRICT

VCBO NUMBER: 24385

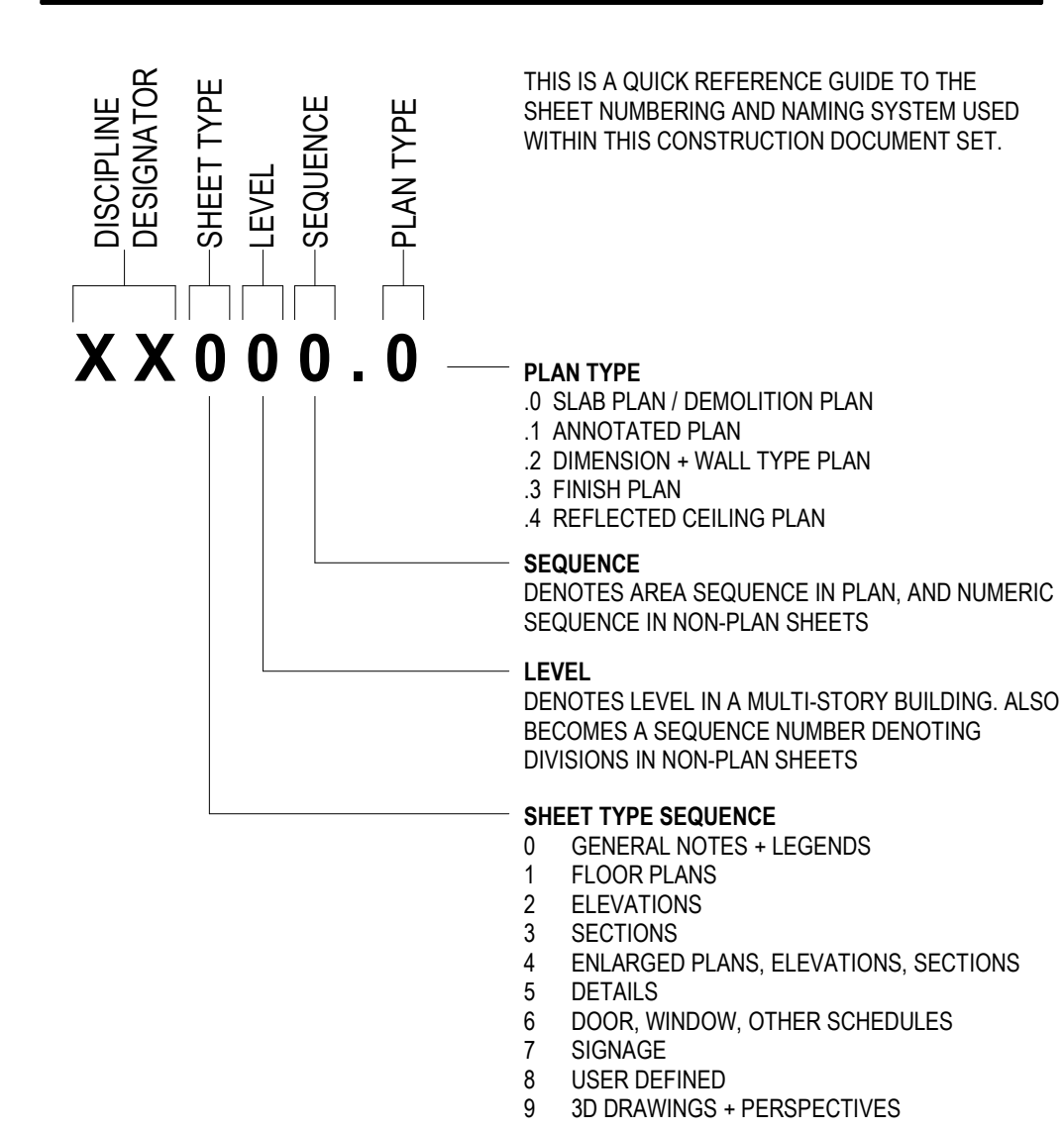
SCHEMATIC DESIGN
2025 -1-28



PROJECT ABBREVIATIONS NOT ALL ABBREVIATIONS MAY BE USED

&	AND	INFO	INFORMATION
@	AT	INT	INTERIOR
ACM	ALUMINUM COMPOSITE MATERIAL	INSUL	INSULATE, (D), (ION)
ACT	ACOUSTICAL CEILING TILE	INW	INNER
ADJ	ADJUSTABLE	JT	JOINT
AFF	ABOVE FINISH FLOOR	LAV	LAVATORY
ALT	ALTERNATE	LB / LBS	POUND (S)
AL/ALUM	ALUMINUM	LVT	LUXURY VINYL TILE
APPROX	APPROXIMATE	MAX	MAXIMUM
ARCH	ARCHITECTURAL	MECH	MEDIUM DENSITY MECHANICAL
AVB	AIR VAPOR BARRIER	MEZ	MEZZANINE
BRD	BOARD	MFR	MANUFACTURER
BLDG	BUILDING	MGR	MANAGER
BLK	BLOCKING	MIN	MINIMUM
BO	BOTTOM OF	MISC	MISCELLANEOUS
BRG	BEARING	MTD	MOUNT (ED)
BSMT	BASEMENT	MTL	METAL
BW	BOTH WAYS	NIC	NOT IN CONTRACT
CAB	CABINET	NO	NUMBER
CB	CATCH BASIN	NOM	NORMAL
CCSA	CUSTOM COLOR SELECTED BY ARCHITECT	NRC	NOISE REDUCTION COEFFICIENT
CG	CORNER GUARD	NTS	NOT TO SCALE
CFCI	CONTRACTOR FURNISHED / CONTRACTOR INSTALLED	OC	ON CENTER
CHAM	CHAMFER	OD	OUTSIDE DIAMETER
CJ	CONTROL JOINT	OFCI	OWNER FURNISHED / CONTRACTOR INSTALLED
CL	CENTER LINE	OFOI	OWNER FURNISHED / OWNER INSTALLED
CLG	CEILING	OH	OVERHEAD
CLR	CLEAR	OPP	OPOSITE
CM	CONSTRUCTION MANAGER	OSB	ORIENTED STRAND BOARD
COL	COLUMN	QZ	QUARRY
CONC	CONCRETE	PL	PLATE
CONT	CONTINUOUS	PLAM	PLASTIC LAMINATE
CMU	CONCRETE MASONRY UNIT	PNL	PANEL
CSBA	COLOR SELECTED BY ARCHITECT	PNT	PAINT (ED)
CT	CERAMIC TILE	PR	PAIR
D	DEPTH	PT	POST TENSIONED
DB	DECK BEARING	PLY	PLYWOOD
DBL	DOUBLE	QT	QUARRY TILE
DEPT	DEPARTMENT	R / RAD	RADIUS
DF	DRINKING FOUNTAIN	RCF	REFLECTED CEILING PLAN
DIA	DIAMETER	REC	RECESSED
DIM	DIMENSION	REF	REFERENCE
DN	DOWN	REINF	REINFORCE (NG)
DT/DET	DETAIL	REPL	REPLACE
DW	DISHWASHER	REQD	REQUIRED
DWG	DRAWING	REV	REVISION (S)
(E)	EXISTING	RM	ROOM
EA	EACH	RO	ROUGH OPENING
EIPS	EXTERIOR INSULATION SYSTEM	SALV	SALVAGE (ED)
EJ	EXPANSION JOINT	SECT	SECTION
ELEC	ELECTRICAL	SF	SQUARE FOOT
ELEV	ELEVATION	SIM	SIMILAR
EQ	EQUAL	SPEC	SPECIFICATION (S)
EQUIP	EQUIPMENT	SQ	SQUARE
EVAP	EVAPORATIVE	SS	STAINLESS STEEL
EX / EXIST	EXISTING	STC	SOUND TRANSMISSION CLASS
EXP	EXPANSION	STD	STANDARD
EXT	EXTERIOR	STL	STEEL
EW	ELECTRIC WATER COOLER	STR	STORAGE
FA	FIRE ALARM	STRUC	STRUCTURE (AL)
FD	FLOOR DRAIN	SUSP	SUSPENDED
FND	FOUNDATION	SYM	SYMMETRY (ICAL)
FE	FIRE EXTINGUISHER	T & B	TOP AND BOTTOM
FEC	FIRE EXTINGUISHER CABINET	T & G	TONGUE AND GROOVE
FG	FINISH GRADE	TEMP	TEMPORARY
FH	FIRE HYDRANT	THRU	THROUGH
FN	FINISHED	T.O.	TOP OF
FLR	FLOOR	TRANS	TRANSFORMER
F.O.	FACE OF	TS	TUBE STEEL
FT	FOOT, FEET	TYP	TYPICAL
FRP	FIBER REINFORCED PANEL	UNO	UNLESS OTHERWISE NOTED
FTG	FOOTING	VAR	VARIABLE
FV	FIELD VERIFY	VCT	VINYL COMPOSITION TILE
GA	GALVE	VERT	VERTICAL
GALV	GALVANIZED	VEST	VESTIBLE
GC	GENERAL CONTRACTOR	VVC	VINYL WALL COVERING
GFRG	GLASS FIBER REINFORCED GYPSUM	W	WIDTH
GYP	GYPSUM	WI	WITH
GWB	GYPSUM WALLBOARD	WC	WATER CLOSET
HB	HOSE BIB	WD	WIDE FLANGE BEAM
HC	HANDICAP ACCESSIBLE	WO	WITHOUT
HDF	HIGH DENSITY FIBERBOARD	WSCOT	WAINSCOT
HM	HOLLOW METAL	WWF	WELDED WIRE FABRIC
H	HEIGHT		
HOR	HORIZONTAL		
ID	INSIDE DIAMETER		
ICF	INSULATED CONCRETE FORM		
IN	INCH		
INCL	INCLUDE		

SHEET NUMBERING



NOTES TO BIDDERS

- THIS SHEET CONTAINS A LIST OF DRAWINGS WHICH COMPRISE A FULL SET OF DRAWINGS FOR THIS PROJECT. ANY CONTRACTOR, SUBCONTRACTOR, VENDOR OR ANY OTHER PERSON PARTICIPATING IN OR BIDDING ON THIS PROJECT SHALL BE RESPONSIBLE FOR THE INFORMATION CONTAINED IN ANY AND ALL SHEETS OF DRAWINGS AND SPECIFICATIONS. IF ANY PERSON, PARTY OR ENTITY ELECTS TO SUBMIT BIDS FOR ANY PORTION, OR ALL, OF THIS PROJECT, THAT PERSON, PARTY OR ENTITY SHALL BE RESPONSIBLE FOR ANY AND ALL INFORMATION CONTAINED IN THESE DRAWINGS AND SPECIFICATIONS, INCLUDING, BUT NOT LIMITED TO, ANY SUBSEQUENT ADDENDUMS OR CLARIFICATIONS THAT MAY BE ISSUED.
- THESE DOCUMENTS SHOW THE DESIGN INTENT. IT IS THE CONTRACTORS RESPONSIBILITY TO PROVIDE EVERYTHING SHOWN ON THE DRAWINGS OR SPECIFIED REGARDLESS OF WHETHER IT IS SHOWN ON THE DRAWINGS OR IN THE SPECIFICATIONS. FOR EXAMPLE, SOME MILLWORK DETAILS HAVE STEEL FRAMES WHICH MAY BE PROVIDED BY DIVISION 05 OR WITH THE MILLWORK AT THE CONTRACTORS DISCRETION, BUT IT SHALL BE PROVIDED AS PART OF THE CONTRACT.
- EVERYTHING CALLED FOR IN THESE DOCUMENTS SHALL BE "NEW" AND PROVIDED BY THE CONTRACTOR, SUBCONTRACTOR, VENDOR OR ANY OTHER PERSON PARTICIPATING IN OR BIDDING ON THIS PROJECT UNLESS NOTED OTHERWISE AS EXISTING (EXIST), NOT IN CONTRACT (NIC) OR FOR REFERENCE ONLY. FURNISHINGS SHOWN DASHED SHALL BE FOR REFERENCE ONLY.

GENERAL PROJECT NOTES

- IT IS THE CONTRACTORS RESPONSIBILITY TO REVIEW AND COORDINATE THE WORK OF ALL SUB-CONTRACTORS, TRADES AND SUPPLIERS WITH THE REQUIREMENTS OF THE CONTRACT DOCUMENTS BEFORE COMMENCING CONSTRUCTION, AND TO ASSURE THAT ALL PARTIES ARE AWARE OF ALL REQUIREMENTS, REGARDLESS OF WHERE THE REQUIREMENTS OCCUR IN THE CONTRACT DOCUMENTS, WHICH MIGHT AFFECT THE WORK OF THAT PARTY.
- AS PART OF THE CONTRACTORS RESPONSIBILITY TO COORDINATE THE WORK OF ALL SUB-CONTRACTORS, TRADES AND SUPPLIERS, THE CONTRACTOR SHALL ENDEAVOR TO IDENTIFY AND NOTIFY THE ARCHITECT OF ANY CONFLICTS BETWEEN THE WORK OF DIFFERENT PARTIES AT THE EARLIEST POSSIBLE DATE SO AS TO ALLOW REASONABLE AND ADEQUATE TIME FOR THE CONFLICT TO BE RESOLVED WITHOUT DELAYING THE WORK. ALL DEVIATIONS FROM THAT WHICH IS REQUIRED BY THE CONTRACT DOCUMENTS MUST BE APPROVED IN ADVANCE BY THE ARCHITECT.
- THE ARCHITECTURAL DRAWINGS ESTABLISH AND COORDINATE THE FINISHED APPEARANCE AND EXACT LOCATION OF ALL EXPOSED ELEMENTS OF THE WORK OF ALL THE TRADES, INCLUDING THAT WORK WHICH IS ILLUSTRATED PRIMARILY ON DRAWINGS OF OTHER DISCIPLINES. QUANTITIES ARE TO BE PROVIDED AS SHOWN ON DRAWINGS OF OTHER DISCIPLINES BUT LOCATIONS SHOWN ON OTHER DRAWINGS ARE SCHEMATIC, UNLESS OTHERWISE NOTED ON THE ARCHITECTURAL DRAWINGS. THE ARCHITECTURAL DRAWINGS TAKE PRECEDENCE FOR THE FINISHED APPEARANCE AND EXACT LOCATION OF ALL PARTS OF THE WORK.
- EXCEPT WHERE DIRECTED TO PLACE ITEMS OF WORK AT THE APPROXIMATE LOCATION SHOWN, DO NOT SCALE DRAWINGS FOR DIMENSIONAL INFORMATION. ALL ELEMENTS OF THE DRAWINGS MAY NOT BE DRAWN TO EXACT SCALE. ALL DIMENSIONS REQUIRED ARE SHOWN OR MAY BE DERIVED FROM THOSE SHOWN ON THE FLOOR PLANS, DETAIL PLANS, ELEVATIONS, SECTIONS, DETAILS, SCHEDULES AND SPECIFICATIONS. IF DIMENSIONS ARE NOT PRESENT, THE ARCHITECT IS TO BE NOTIFIED SO THAT A CLARIFICATION CAN BE ISSUED.
- CONTRACTOR TO FOLLOW CURRENT ANSI 117-1 STANDARDS AS REPRESENTED ON SHEET G301, GENERAL ACCESSIBILITY GUIDELINES. NOTIFY ARCHITECT IF THE DESIGN DRAWINGS CONFLICT WITH THIS SHEET.

PROJECT DESCRIPTION

THE PROJECT AIMS TO CREATE A DEDICATED AFTER-SCHOOL SPACE FOR STUDENTS WITHIN THE EXISTING KIVA COMMONS AREA AT MOUNTAIN VIEW ELEMENTARY. THE DESIGN WILL DIVIDE THE CURRENT SPACE WHILE MAINTAINING VISUAL CONNECTIVITY WITH THE SURROUNDING SCHOOL ENVIRONMENT. THIS NEW SPACE WILL SERVE AS A STUDY AND LEARNING AREA AND INCLUDE STORAGE FOR A COMPUTER CART.

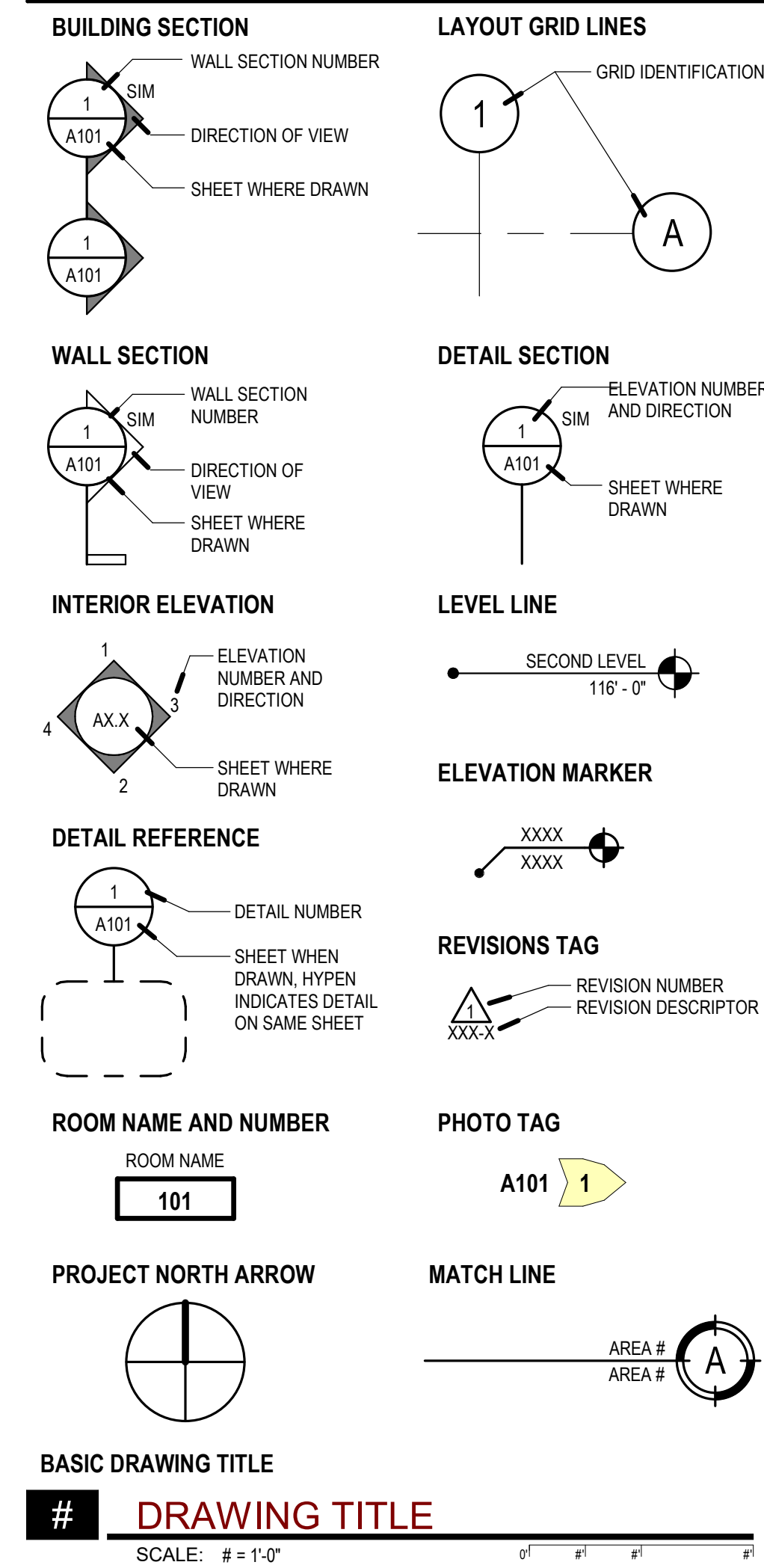
SCOPE OF WORK:

THE PROJECT INVOLVES CONSTRUCTING A FRAMED SPACE WITH A SINGLE DOOR FOR ACCESS AND WINDOW OPENINGS FOR GLAZING. THE DESIGN WILL REMAIN OPEN TO THE CEILING ABOVE, WITH NO FULL ENCLOSURE PROVIDED. NO MODIFICATIONS WILL BE MADE TO THE EGRESS OR OCCUPANCY CLASSIFICATION OF THE EXISTING SPACE

SHEET INDEX

Sheet Number	Sheet Name
CV1	PHOTO & TEXT COVER
G001	GENERAL INFORMATION + INDEX
ARCHITECTURAL	
A110.1	ANNOTATED PLAN - LEVEL 01
A401	ENLARGED PLANS + ELEVATIONS
Grand total:	4

REFERENCE SYMBOL LEGEND



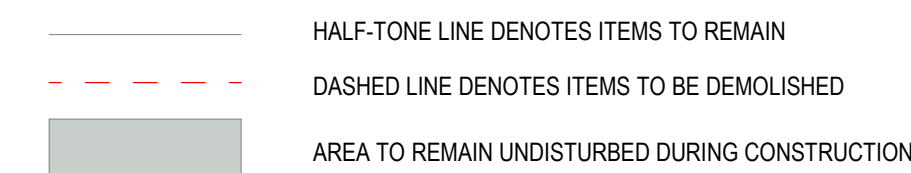
GENERAL DEMOLITION NOTES

- FIELD VERIFY DIMENSIONS AND CONDITIONS INCLUDING EXISTING UTILITIES PRIOR TO BIDDING. BRING DIFFERING DIMENSIONS AND CONDITIONS TO ARCHITECT'S ATTENTION PRIOR TO BIDDING.
- A HAZARDOUS MATERIAL SURVEY IS AVAILABLE FROM THE OWNER. ABATEMENT MUST BE COMPLETED PRIOR TO DEMOLITION OF BUILDINGS OR BUILDING ELEMENTS.
- PROVIDE DUSTPROOF ENCLOSURES AT PERIMETER OF CONSTRUCTION & DEMOLITION FOR PROTECTION OF ADJACENT SPACES.
- KEEP ALL EGRESS PATHS INTACT THROUGHOUT CONSTRUCTION.
- BRING TO ARCHITECT'S ATTENTION EXISTING CONDITIONS THAT PRESENT ANY CODE VIOLATIONS, INCORRECT CONSTRUCTION OR SAFETY PROBLEMS.
- MAINTAIN EXISTING FIRE RATINGS, AND ASSOCIATED FIRE PROTECTION SYSTEMS (I.E. FIRE SPRINKLERS AND FIRE ALARM SYSTEMS) THROUGHOUT CONSTRUCTION. COORDINATE ANY INTERRUPTION TO THESE SYSTEMS WITH THE OWNER AND FIRE MARSHAL. PROVIDE FIRE WATCH REQUIREMENTS ASSOCIATED WITH INTERRUPTIONS TO THESE SYSTEMS.
- PROTECT EXISTING STRUCTURE, FINISHES, AND SITE ELEMENTS NOT SCHEDULED FOR DEMOLITION. RESTORE DAMAGED ITEMS TO THEIR ORIGINAL CONDITION OR REPLACE AT CONTRACTOR'S EXPENSE.
- REMOVE AND DISPOSE SELECTIVE DEMOLITION MATERIAL PER CITY REQUIREMENTS.
- SALVAGE MATERIAL WHERE INDICATED. REMOVE ITEMS FROM CURRENT LOCATIONS & PREPARE FOR TRANSPORT BY THE OWNER.

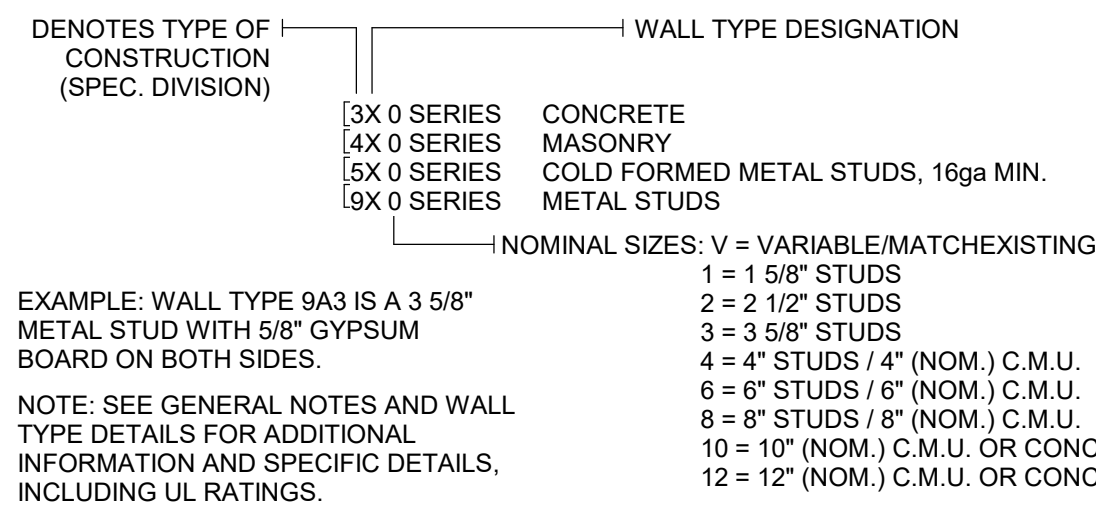
GENERAL PLAN DEMOLITION NOTES

- MAINTAIN EXISTING FIRE RATINGS THROUGHOUT CONSTRUCTION.
- DO NOT DISTURB EXISTING FIRE RATED ELEMENTS INCLUDING FIREPROOFING, PATCH/REPAIR DAMAGED OR DISTURBED ITEMS.
- AFTER DEMOLITION, PRIOR TO FINISH, PATCH AND REPAIR EXISTING WALLS TO PROVIDE SMOOTH SURFACE SUITABLE FOR PAINTING OR WALL COVERING.
- PATCH & LEVEL EXISTING CONCRETE SLABS FOR NEW FINISHES WITH FLOOR LEVELING COMPOUND.
- WHERE ELECTRICAL CIRCUIT CONTINUITY IS INTERRUPTED, BUT MUST BE MAINTAINED, MAKE NECESSARY MODIFICATIONS TO MAINTAIN CIRCUIT INTEGRITY.
- REMOVE ELECTRICAL BOXES BEHIND RELOCATED MILLWORK AND CAP AS REQUIRED.
- CAP EXISTING DUCT WORK FOR DUST CONTROL.
- WHERE FLOORING IS DEMOLISHED AND WHERE NEW FLOORING IS TO EITHER BE REPLACED OR INSTALLED ON TOP OF EXISTING FLOORING, CONSTRUCTOR TO CLEAN AND PREPARE SURFACE FOR NEW FLOORING.

DEMOLITION LEGEND



WALL TYPE LEGEND



GENERAL NOTES

- PLEASE REFER TO G-SHEETS FOR GENERAL NOTES AND GUIDELINES RELATED TO THE DRAWINGS
- REFER TO G110 FOR FIRE RATED WALL & DOOR LOCATIONS

HARDWARE:

QTY	DESCRIPTION	CATALOG #	MFR
3	HINGE	58B1HW 4.5 X 4.5	IVE
1	SURFACE CLOSER	4040XP CUSH TBWMS	LON
		SCHLAGE CYLINDER	SCH
		LOCK	BY OWNER

1 DOOR TO MATCH EXISTING DOOR FINISH, FRAME COLOR, AND HARDWARE

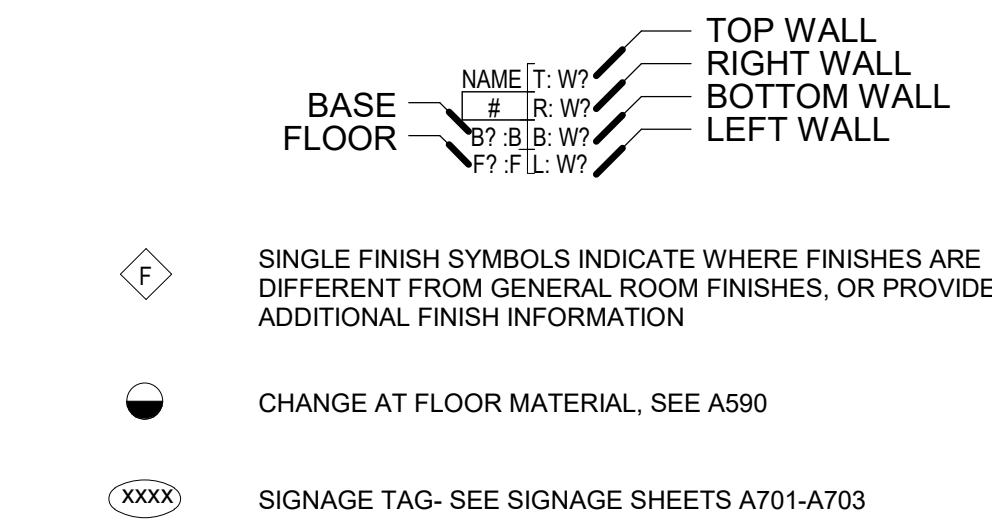
E3 DOOR ELEVATION SCHEDULE

SCALE: 1/4" = 1'-0"

DOOR & FRAME NOTES

- MATERIAL ABBREVIATIONS: WD = WOOD, GL = GLASS, AL = ALUMINUM, HM = HOLLOW METAL.
- SEE SPECIFICATION FOR HARDWARE GROUP DEFINITION.
- OVERALL ALUMINUM FRAME DIMENSIONS ARE GIVEN FOR REFERENCE. REFER TO DETAILS FOR JAMB AND SILL CONDITIONS. OVERALL DIMENSIONS ARE TO BE FIELD VERIFIED.
- GENERAL CONTRACTOR TO COORDINATE WORK BETWEEN DOOR INSTALLER AND SECURITY SYSTEM INSTALLER.

FINISH PLAN SYMBOLS



GLAZING TYPE LEGEND

MARK	DESCRIPTION
①	3/8" TEMPERED FLOAT GLASS - HEIGHTS UP TO 6'-0"
②	1/2" TEMPERED FLOAT GLASS - HEIGHTS UP TO 8'-0"

FINISH PLAN LEGEND

- WALL MATERIALS -**
- ANY TILE TRANSITIONS TO HAVE SCHLUTER
 - W2 12"x12" PORCELAIN TILE WAINSCOT - MATCH ADJACENT EXISTING TILE. UP TO EXISTING HEIGHT OR 3'-0"; FIELD VERIFY - GENERAL PAINT ABOVE
- FLOOR MATERIALS**
- F0 EXISTING CARPET TILE - PROTECT DURING CONSTRUCTION PATCH AND REPAIR AS NECESSARY.
- BASE MATERIALS**
- B0 NO BASE - CAULK BETWEEN FLOOR & WALL OR SILL (WHERE OCCURS)
- PAINT**
- P0 PAINT - GENERAL (WHITE) - MATCH ADJACENT EXISTING PAINT

ROOM FINISH SCHEDULE

Room Name	Room Number	Floor Finish	Base Finish	Wall Finish T	Wall Finish R	Wall Finish B	Wall Finish L
AFTER SCHOOLS	1	F0	B0	P0	P0	P0	P0

NON-BEARING METAL HEADER SCHEDULE

MAXIMUM SPAN	HEADER	FY
4'-0"	(2) 400S137-43	33 ksi
6'-0"	(2) 600S162-43	33 ksi
8'-0"	(2) 800S162-43	33 ksi

- METAL STUD HEADER NOTES:
- SCHEDULE TO BE USED FOR NON-BEARING WALLS.
 - HEADERS TO BE CONSTRUCTED AS BOX HEADERS PER SSMA STANDARDS.
 - SEE TYPICAL DETAIL FOR MORE INFORMATION.

NON-BEARING METAL STUD GAUGE SIZING

MEMBER DEPTH IN 1/100 INCHES: 400S137-43

FLANGE WIDTH IN 1/100 INCHES

MATERIAL THICKNESS IN MILS

MEMBER DEPTH	MAX STUD HEIGHT	MIN. GA. & SPACING
2 1/2" (25S125-33)	10'-0"	18@16" O.C.
3 5/8" (362S125-33)	14'-0"	18@16" O.C.
3 5/8" (362S162-33)	16'-0"	18@16" O.C.
3 5/8" (362S162-43)	18'-0"	18@16" O.C.

- METAL STUD NOTES:
- STEEL STUDS SHALL MEET ICC REPORT ER-4943P AND THE SSMA STANDARDS. HEIGHT BASED ON SSMA 2001 CATALOG AND PROJECT REQUIREMENTS.
 - SEE SCHEDULE FOR STUD SPACING AND GAUGE. ALL STUDS AND BRACES SHALL BE 33 KSI UNLESS NOTED OTHERWISE IN THESE DRAWINGS.
 - AT ALL DOORS PROVIDE TWO TABBED 18 GAUGE STUDS AT BOTH SIDES OF JAMB.

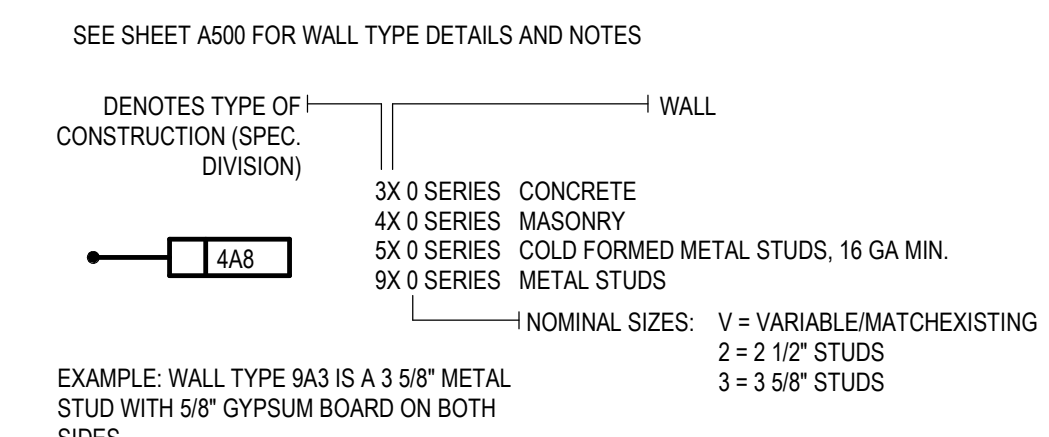
PARTITION + FRAMING GENERAL NOTES

- FRAMED WALL PARTITIONS**
- PARTITION TYPE INDICATIONS ARE INDEPENDENT OF APPLIED FINISHES. SEE FINISH SHEETS AND INTERIOR ELEVATIONS FOR WALL FINISHES INCLUDING TILE COURSING AND LAYOUT AND/OR THE DESIGNATIONS ON THE PLANS FOR ADDITIONAL INFORMATION REGARDING APPLIED FINISHES.
 - WHERE PARTITION TYPE DESIGNATION ON FLOOR PLANS IS INTERRUPTED BY DOOR OPENING, GLAZED PARTITION, ETC., CONSTRUCTION ABOVE INTERRUPTION (AND WHERE APPLICABLE BELOW) IS TO BE THE SAME AS THAT DESIGNATED FOR THE PARTITION IN WHICH THE INTERRUPTION OCCURRED.
 - THE MINIMUM REQUIREMENTS FOR CONSTRUCTION OF EACH PARTITION TYPE AS EXPRESSED BY THE INDICATED REFERENCE ARE INCORPORATED BY REFERENCE AND ARE APPLICABLE TO THE WORK OF THIS PROJECT. HOWEVER, ADDITIONAL AND/OR MORE RESTRICTIVE REQUIREMENTS MAY BE INDICATED BY THE SPECIFICATIONS AND DRAWINGS. SUCH REQUIREMENTS ALSO APPLY AND SHALL GOVERN. SUCH REQUIREMENTS INCLUDE BUT ARE NOT LIMITED TO:
 - USE 5/8" THICK GYPSUM BOARD THROUGHOUT UNLESS NOTED OTHERWISE.
 - USE 1/4" O.C. MAX STUD SPACING UNLESS NOTED OTHERWISE IN THESE DOCUMENTS. THE SPACING STATED BY THE REFERENCED APPROVAL OR TEST REPORT IS THE MAX SPACING IF ALLOWED IN THESE DOCUMENTS.
 - USE STUDS OF GAUGE INDICATED ON THE DRAWINGS OR IN THE SPECIFICATIONS. THE GAUGE STATED BY THE REFERENCED APPROVAL OR TEST REPORT IS THE MINIMUM GAUGE TESTED, 20 GA (30 MILS) IS THE MINIMUM ALLOWED IN THESE DOCUMENTS.
 - USE STUDS OF DEPTH INDICATED BY THIS SET OF DOCUMENTS. THE DEPTH STATED BY THE REFERENCED APPROVAL OR TEST REPORT IS THE MINIMUM DEPTH TESTED DEPTH ALLOWED IN THESE DOCUMENTS. SEE STRUCTURAL DOCUMENTS FOR ADDITIONAL INFORMATION PERTAINING TO THE CONSTRUCTION OF CONCRETE, MASONRY AND STUD WALLS.
 - ALL DIMENSIONS ARE CENTER OF STUD OR FACE OF CONCRETE, MASONRY OR ROUGH OPENING UNLESS NOTED OTHERWISE. FACE OF FINISHED WALL WILL BE NOTED AS F.F.W.
 - ALL NEW WALLS, STUDS, AND GYPSUM BOARD ARE TO EXTEND TO 8'-0" ABOVE FINISH FLOOR.
 - ALL NEW WALLS NOTED ON THE PLAN TO BE PAINTED TO MATCH ADJACENT EXISTING WALLS.
 - REFER TO SHEET A401 FOR TYPICAL INTERIOR WALL CONDITIONS ASSOCIATED WITH ALL METAL STUD PARTITIONS.
 - AT WALL OPENINGS FOR PENETRATION OF PIPES, DUCTS, DEVICES, ETC., GYPSUM BOARD IS TO BE CUT TO MATCH THE SHAPE AND DIMENSION OF THE PENETRATING OBJECT AND THE GAP BETWEEN THE OBJECT AND THE WALL IS TO BE SEALED W/ACOUSTICAL OR FIRE SEALANT ON ALL SIDES WITH A 3/4" JOINT AT ALL SIDES. MAXIMUM THE OPENING FOR DUCTS OR LARGE PENETRATIONS SHALL BE FRAMED WITH A HEADER, ADD AN ANGLED CORNER BRACE IF THE GAP EXCEEDS 3" FROM FRAMING TO THE OPENING.
 - INSTALL ONE LAYER OF 5/8" GLASS MAT TILE BACKER BOARD IN LIEU OF GYPSUM BOARD (WHERE GYPSUM BOARD OCCURS) OF BASIC PARTITION WHERE THERE IS TILE.

GENERAL DIMENSION NOTES

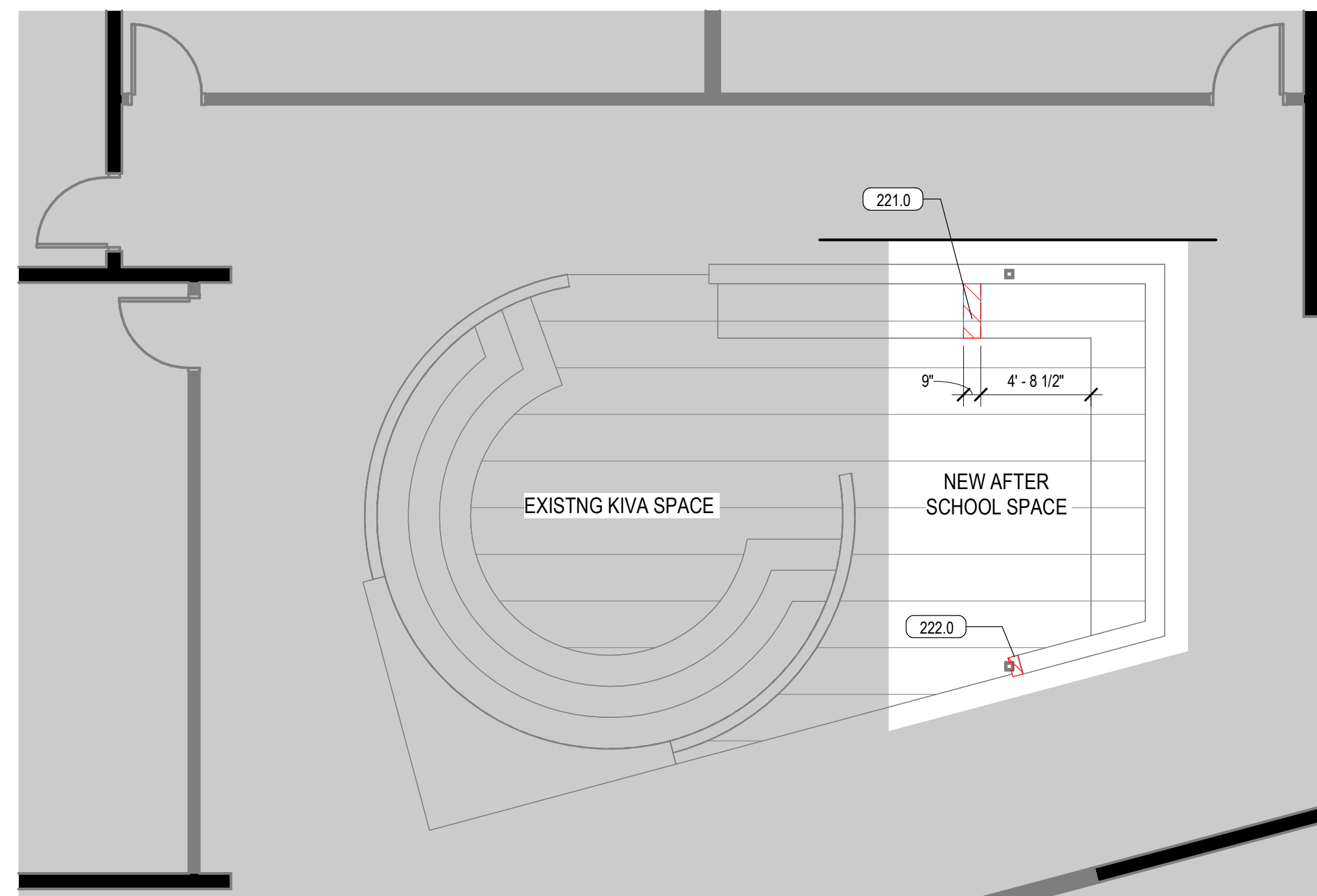
- ALL DIMENSIONS ARE TO CENTER OF STUD WALL OR FACE OF CONCRETE, MASONRY OR ROUGH OPENING UNLESS NOTED OTHERWISE. WHERE THE END OF A WALL IS INDICATED THE DIMENSION IS TO THE FINISH SURFACE OF THE WALL END.
- UNLESS DIMENSIONED OTHERWISE, THE DIMENSION FROM THE BUCK OF A DOOR FRAME IS TO BE 4" TO THE WALL CORNER.
- EXCEPT WHERE DIRECTED TO PLACE ITEMS OF WORK AT THE APPROXIMATE LOCATION SHOWN, DO NOT SCALE DRAWINGS FOR DIMENSIONAL INFORMATION. ALL ELEMENTS OF THE DRAWINGS MAY NOT BE DRAWN TO EXACT SCALE. ALL DIMENSIONS REQUIRED ARE SHOWN OR MAY BE DERIVED FROM THOSE SHOWN ON THE FLOOR PLANS, DETAIL PLANS, ELEVATIONS, SECTIONS, DETAILS, SCHEDULES AND SPECIFICATIONS. IF DIMENSIONS ARE NOT PRESENT, THE ARCHITECT IS TO BE NOTIFIED SO THAT A CLARIFICATION CAN BE ISSUED.
- ANY WALL NOT TAGGED SHOULD BE BID AS WALL TYPE 9A6 AND THE WALL TYPE SHOULD BE VERIFIED WITH THE ARCHITECT.
- EXCEPT WHERE DIRECTED TO PLACE ITEMS OF WORK AT THE APPROXIMATE LOCATION SHOWN, DO NOT SCALE DRAWINGS FOR DIMENSIONAL INFORMATION. ALL ELEMENTS OF THE DRAWINGS MAY NOT BE DRAWN TO THE EXACT SCALE. ALL DIMENSIONS REQUIRED ARE SHOWN OR MAY BE DERIVED FROM THOSE SHOWN ON THE FLOOR PLANS, DETAIL PLANS, ELEVATIONS, SECTIONS, DETAILS, SCHEDULES AND SPECIFICATIONS. IF DIMENSIONS ARE NOT PRESENT, THE ARCHITECT IS TO BE NOTIFIED SO THAT A CLARIFICATION CAN BE ISSUED.
- CONTRACTOR TO FOLLOW THE MOST RECENTLY ADOPTED VERSION OF ANSI A117.1 (AS ADOPTED BY THE AHJ). THESE STANDARDS ARE REPRESENTED ON SHEET G300 GENERAL ACCESSIBILITY GUIDELINES. NOTIFY THE ARCHITECT IF THE DESIGN DRAWINGS CONFLICT WITH THE G300 SHEET.

KEY FOR PARTITION TYPES



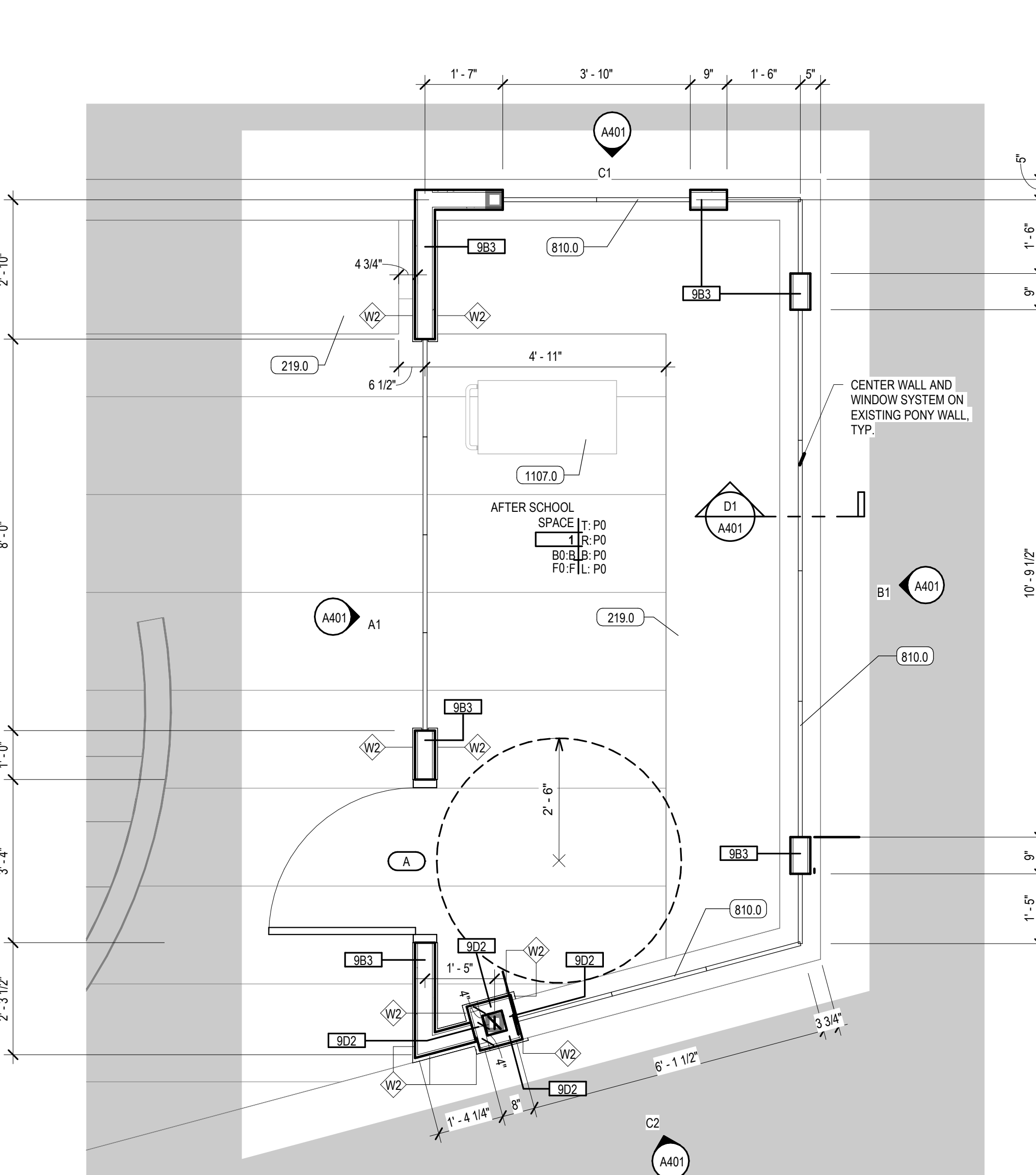
KEYED NOTES

- 219.0 EXISTING MILLWORK, PROTECT AS NECESSARY, REPAIR AS REQUIRED
- 221.0 EXISTING PORTION OF COUNTERTOP TO BE REMOVED IN BETWEEN STANCHIONS. FIELD VERIFY - PROTECT AS NECESSARY, REPAIR AS REQUIRED, PORTIONS THAT REMAIN
- 222.0 EXISTING SOLID SURFACE SILL PORTION TO BE REMOVED, LEAVE TOP OF PONY WALL EXPOSED - PROTECT AS NECESSARY, REPAIR AS REQUIRED, PORTIONS THAT REMAIN
- 223.0 EXISTING 12"x12" WALL TILE
- 618.0 WALL CAP, SOLID SURFACE
- 810.0 BUTT GLAZING, TEMPERED
- 904.0 GYPSUM BOARD PAINTED WHERE EXPOSED
- 921.0 12"x12" WALL TILE MATCH EXISTING SIZE AND LAYOUT
- 1107.0 MOBILE CHARGING CART, I/C



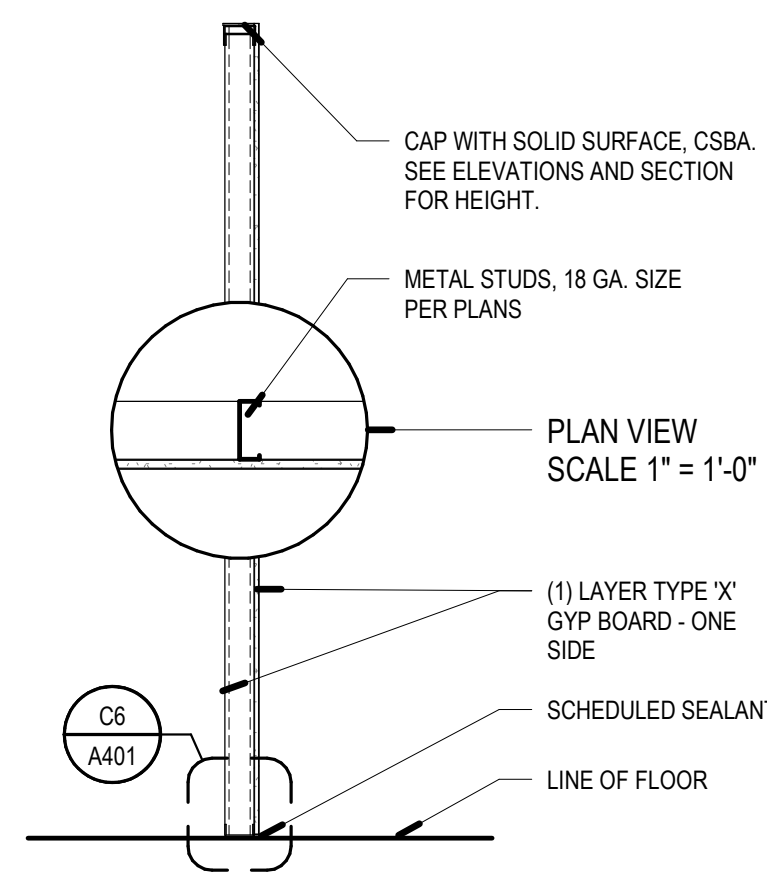
C4 PLAN - LEVEL 01 - DEMOLITION

SCALE: 3/16" = 1'-0"



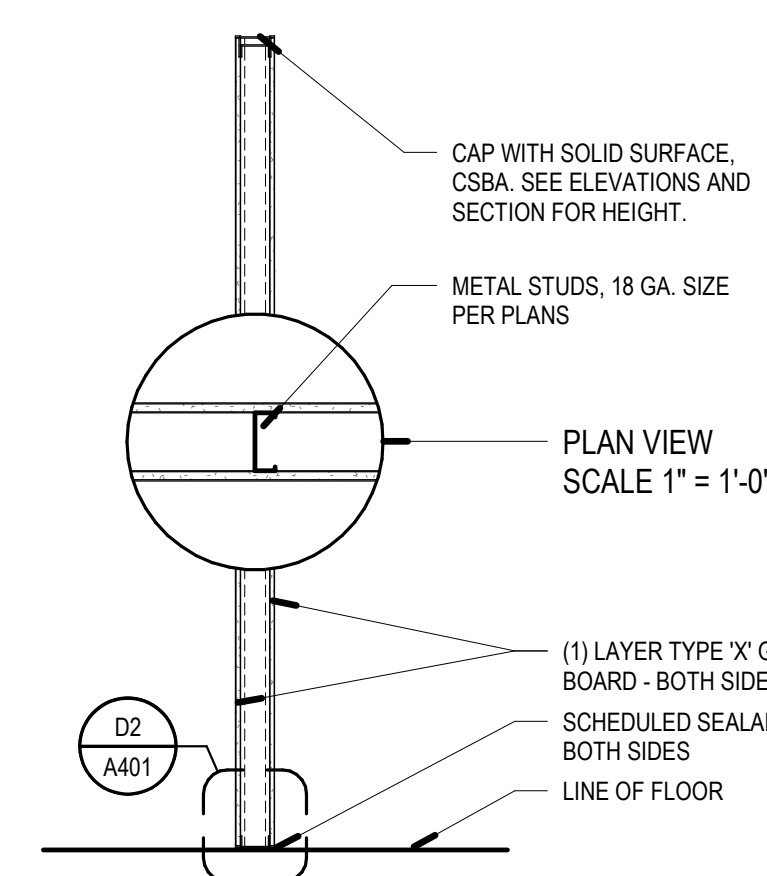
A4 PLAN - LEVEL 01 - ANNOTATED

SCALE: 1/2" = 1'-0"



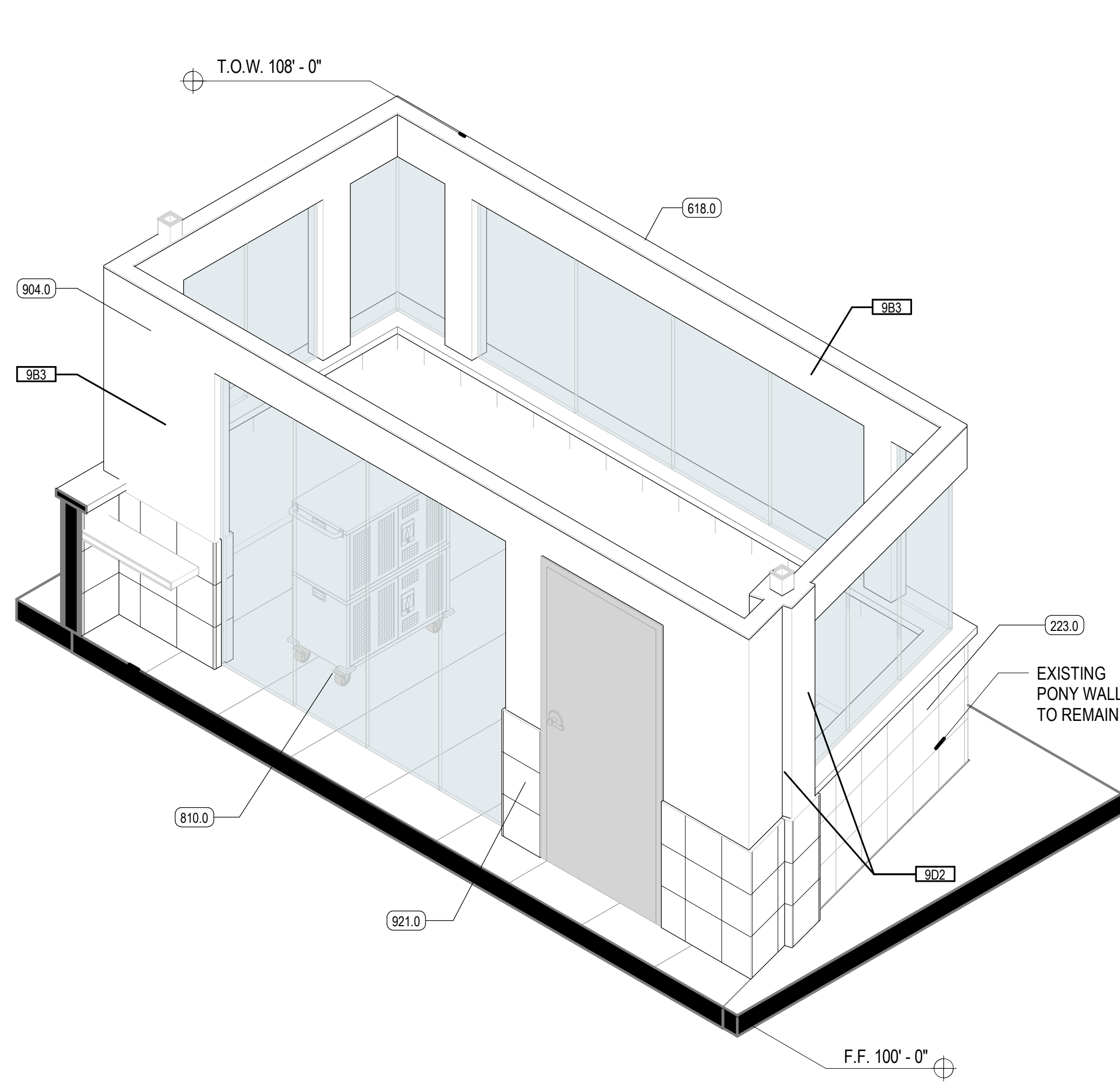
B1 PARTITION - 9Dx - METAL STUD - GB 1 SIDE

SCALE: 1/2" = 1'-0"



A1 PARTITION - 9Bx AND 9Bx-1 - METAL STUD

SCALE: 1/2" = 1'-0"



A2 AFTER SCHOOL SPACE - 3D

SCALE:

