

**Addendum**

**ADD-1.0**

**Reason:** Coordination

**Date:** Thu February 20, 2025

This Addendum shall be considered part of the Contract Documents and Project Manual for the above mentioned project as though it had been issued at the same time and shall be incorporated integrally therewith. Where provisions of the following supplementary data differ from those of the original Contract Documents and Project Manual, the Addendum shall govern and take precedence.

**ADD 001**

Throughout the afterschool space, all windows were given window blinds, a basis of design was given as Hunter Douglas CE61 1" Horizontal blinds or sim. Please see attached product info/data.

- A basis of design was given for the tile as 12"X12" Porcelain tile - SQ 21 Burrow beige, Daltile choice or sim.
- A basis of design was given for the solid surface cap as Powder White, Wisonart Gibraltar OR sim.
- Schluter tile trim was added to all of the new tile.
- Changes to specification Section 00 7300

Article 7 Changes in Work

Section 7.1.4 modified to read:

Subcontractors shall be limited to 10 percent mark-up for allowed profit and overhead on proposed changes and modifications. General Contractor shall be limited to 5 percent mark-up for allowed profit and overhead on proposed changes and modifications.

**Architectural:**

**A110.1 - Annotated Plan**

02/20/2025

**A1/A110.1, B1/A110.1**

Solid surface note was updated to include a basis of design.

**A4/A110.1**

Detail callout for Schluter tile trim was added. Roller blinds were added to all windows (keynote 1200.0).

**A110.1**

Finish Plan Legend - W2 was added to include a basis of design for the tile.

Keyed Notes - 618.0 was updated to include basis of design for solid surface, 1200.0 was added for roller shades.

**A401 - Enlarged Plans + Elevations**

02/20/2025

**A1/A401, C2/A401**

Blinds added to windows. Schluter tile trim detail added.

**B1/A401, C1/A401**

Blinds added to windows.

**C4/A401, C2/A401**

Detail updated to show blinds at windows.

**D4/A401, D62/A401**

Schluter tile trim detail added.

**A401**

Finish Plan Legend - W2 was added to include a basis of design for the tile.

Keyed Notes - 618.0 was updated to include basis of design for solid surface, 1200.0 was added for roller shades.

**Hunter Douglas Blind Product Info**

02/20/2025

Product Data/info for the window blinds basis of design.

**Revised specifications**

02/20/2025

- Section 00 7300 revised.
- Section 06 2000 Finish Carpentry revised.
- Section 09 3013 Ceramic Tiling revised.
- Section 12 2113 Horizontal Louver Blinds added.

**END OF ADD-1.0**

Issued By: **VCBO Architecture:** Layne Chelgren



Feb 20 2025 04:52 PM

cc:



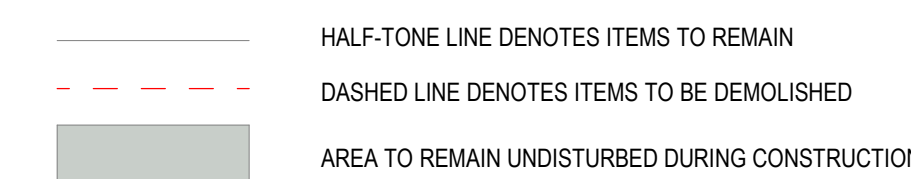
GENERAL DEMOLITION NOTES

- 1. FIELD VERIFY DIMENSIONS AND CONDITIONS INCLUDING EXISTING UTILITIES PRIOR TO BIDDING...

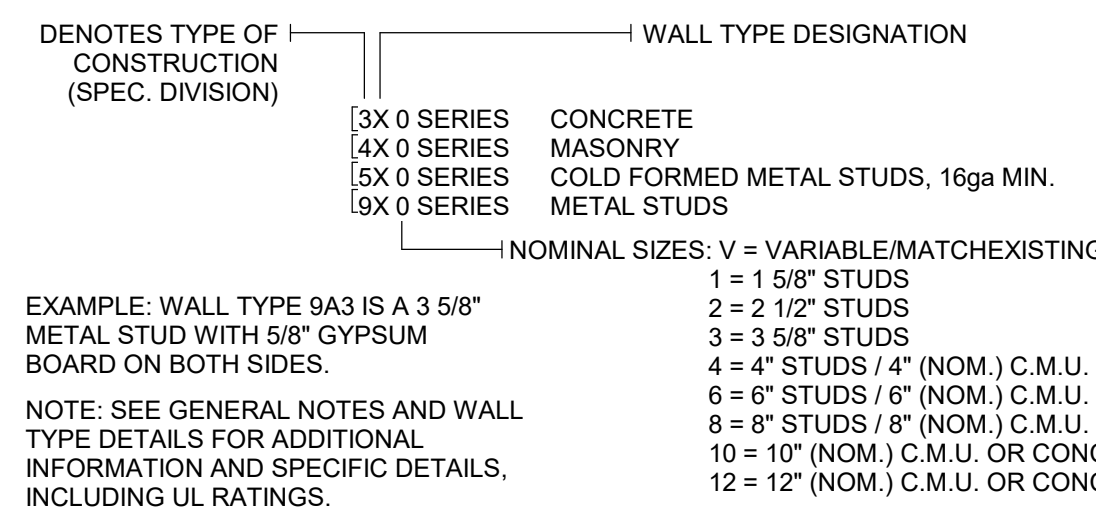
GENERAL PLAN DEMOLITION NOTES

- 1. MAINTAIN EXISTING FIRE RATINGS THROUGHOUT CONSTRUCTION

DEMOLITION LEGEND

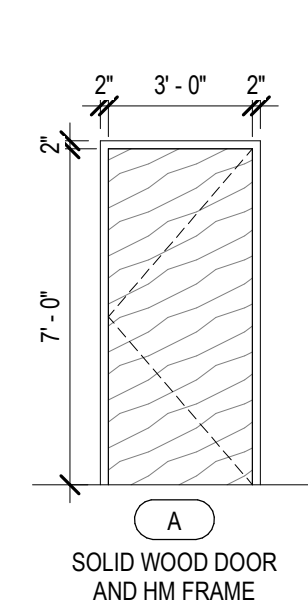


WALL TYPE LEGEND



GENERAL NOTES

- PLEASE REFER TO G-SHEETS FOR GENERAL NOTES AND GUIDELINES RELATED TO THE DRAWINGS



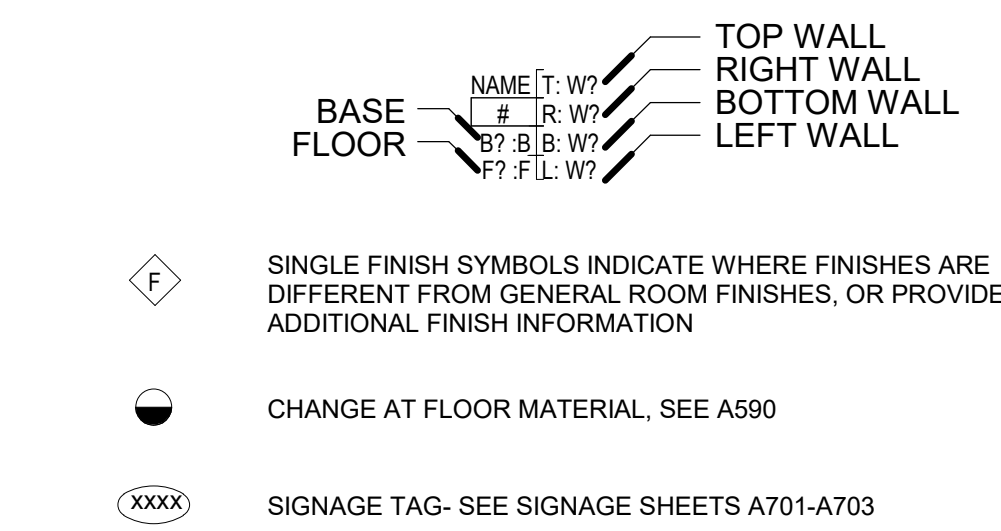
E3 DOOR ELEVATION SCHEDULE

SCALE: 1/4" = 1'-0"

DOOR & FRAME NOTES

- 1. MATERIAL ABBREVIATIONS: WD = WOOD, GL = GLASS, AL = ALUMINUM, HM = HOLLOW METAL

FINISH PLAN SYMBOLS



GLAZING TYPE LEGEND

Table with 2 columns: MARK, DESCRIPTION. Includes 3/8" tempered float glass and 1/2" tempered float glass.

FINISH PLAN LEGEND

- WALL MATERIALS: ANY TILE TRANSITIONS TO HAVE SCLUTTER... FLOOR MATERIALS: EXISTING CARPET TILE... BASE MATERIALS: NO BASE - CAULK BETWEEN FLOOR & WALL OR SILL... PAINT: PAINT - GENERAL (WHITE) - MATCH ADJACENT EXISTING PAINT

ROOM FINISH SCHEDULE table with columns: Room Name, Room Number, Floor Finish, Base Finish, Wall Finish T, Wall Finish R, Wall Finish B, Wall Finish L.

NON-BEARING METAL HEADER SCHEDULE

Table with 3 columns: MAXIMUM SPAN, HEADER, FY. Lists header sizes for 4'-0", 6'-0", and 8'-0" spans.

METAL STUD HEADER NOTES:

- 1. SCHEDULE TO BE USED FOR NON-BEARING WALLS

NON-BEARING METAL STUD GAUGE SIZING

Table with 3 columns: MEMBER DEPTH, MAX STUD HEIGHT, MIN. GA. & SPACING. Lists stud sizes for 2 1/2", 3 5/8", 3 5/8", and 3 5/8" member depths.

METAL STUD NOTES:

- 1. STEEL STUDS SHALL MEET ICC REPORT ER-4943P AND THE SSMA STANDARDS...

PARTITION + FRAMING GENERAL NOTES

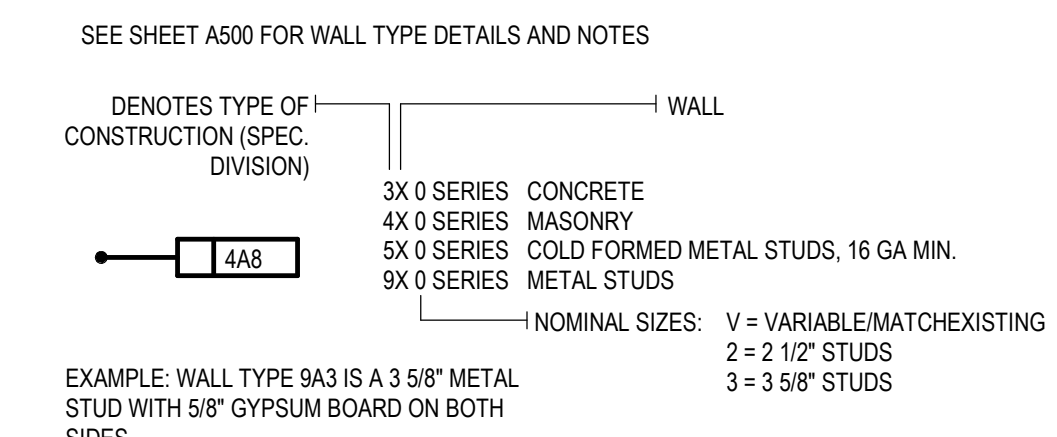
FRAMED WALL PARTITIONS

- 1. PARTITION TYPE INDICATIONS ARE INDEPENDENT OF APPLIED FINISHES... 2. WHERE PARTITION TYPE DESIGNATION ON FLOOR PLANS IS INTERRUPTED BY DOOR OPENING...

GENERAL DIMENSION NOTES

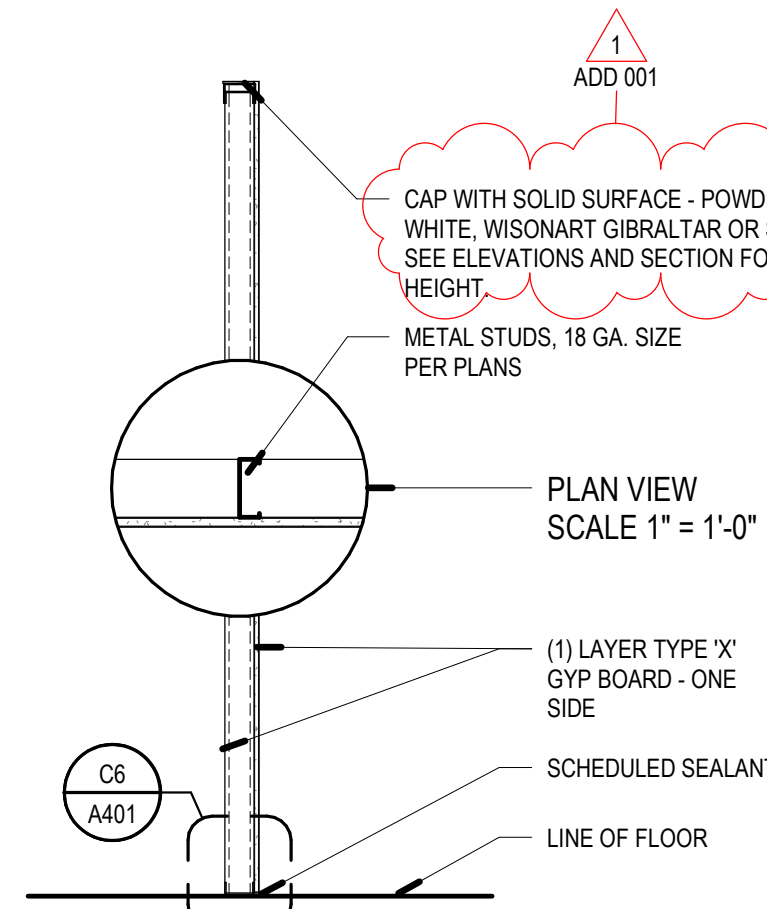
- 1. ALL DIMENSIONS ARE TO CENTER OF STUD WALL OR FACE OF CONCRETE, MASONRY OR ROUGH OPENING UNLESS NOTED OTHERWISE...

KEY FOR PARTITION TYPES



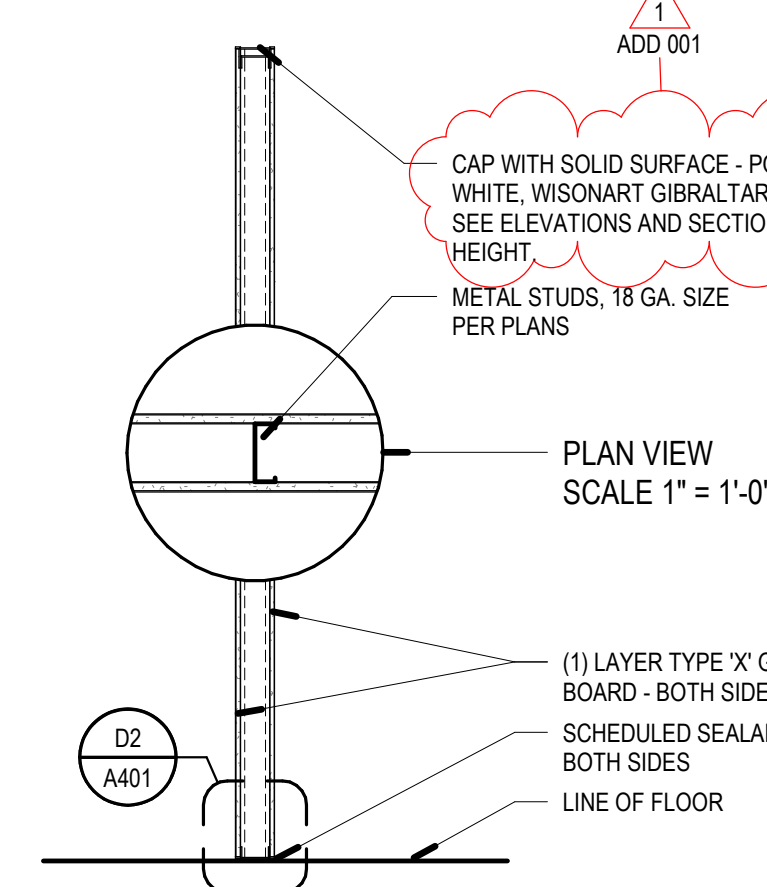
KEYED NOTES

- 219.0 EXISTING MILLWORK, PROTECT AS NECESSARY, REPAIR AS REQUIRED... 221.0 EXISTING PORTION OF COUNTERTOP TO BE REMOVED IN BETWEEN STANCHIONS...



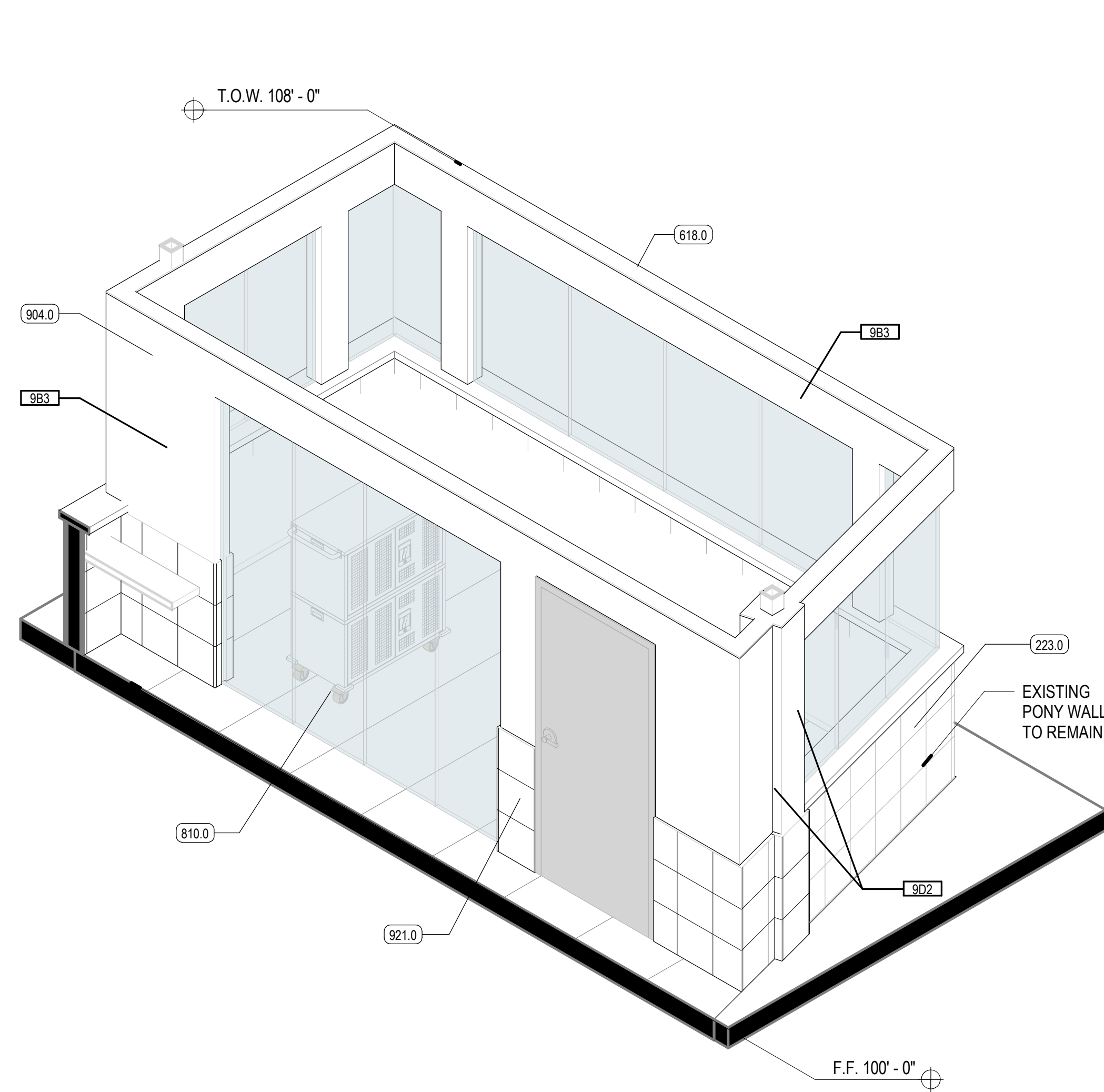
B1 PARTITION - 9Dx - METAL STUD - GB 1 SIDE

SCALE: 1/2" = 1'-0"



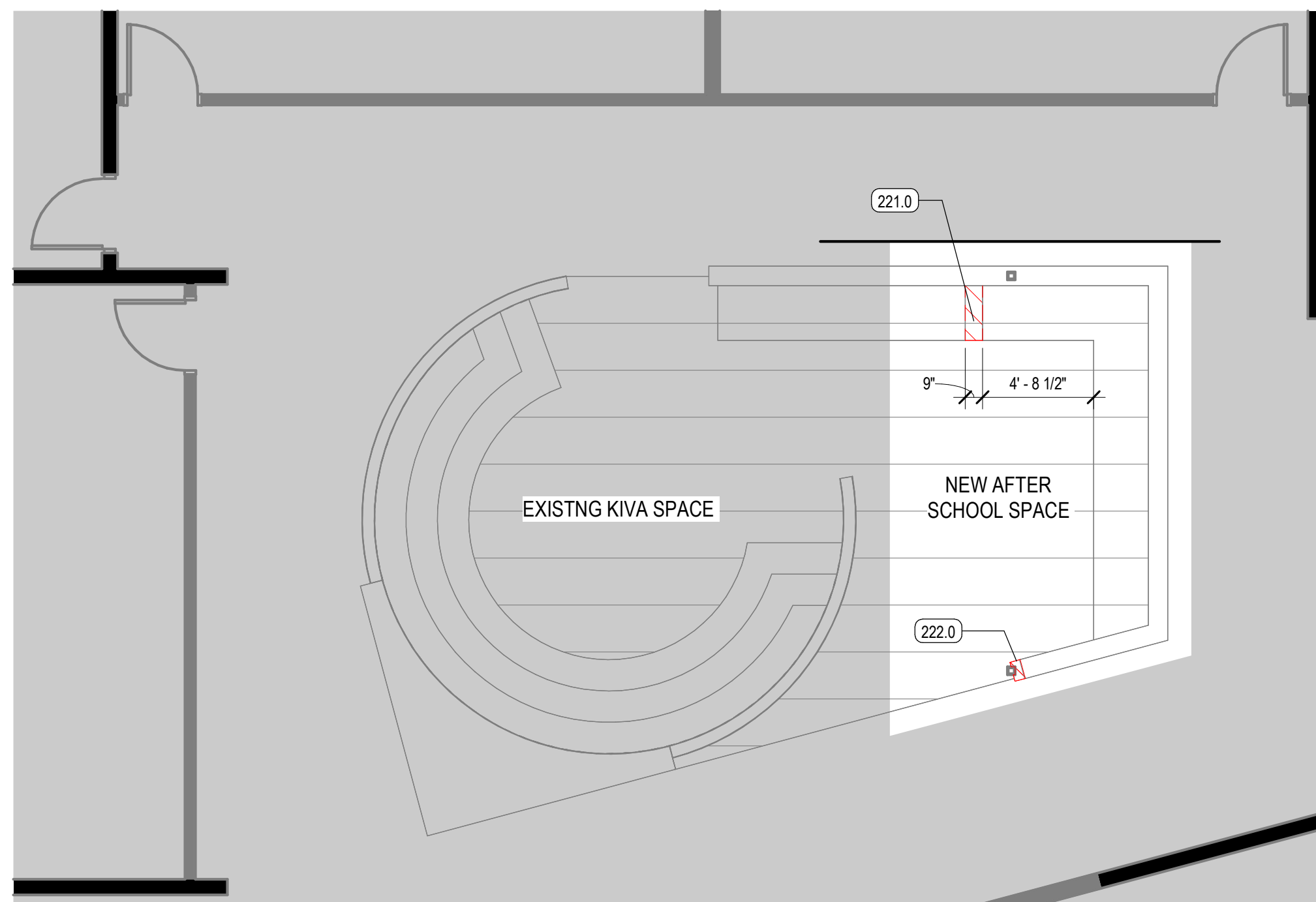
A1 PARTITION - 9Bx AND 9Bx-1 - METAL STUD

SCALE: 1/2" = 1'-0"



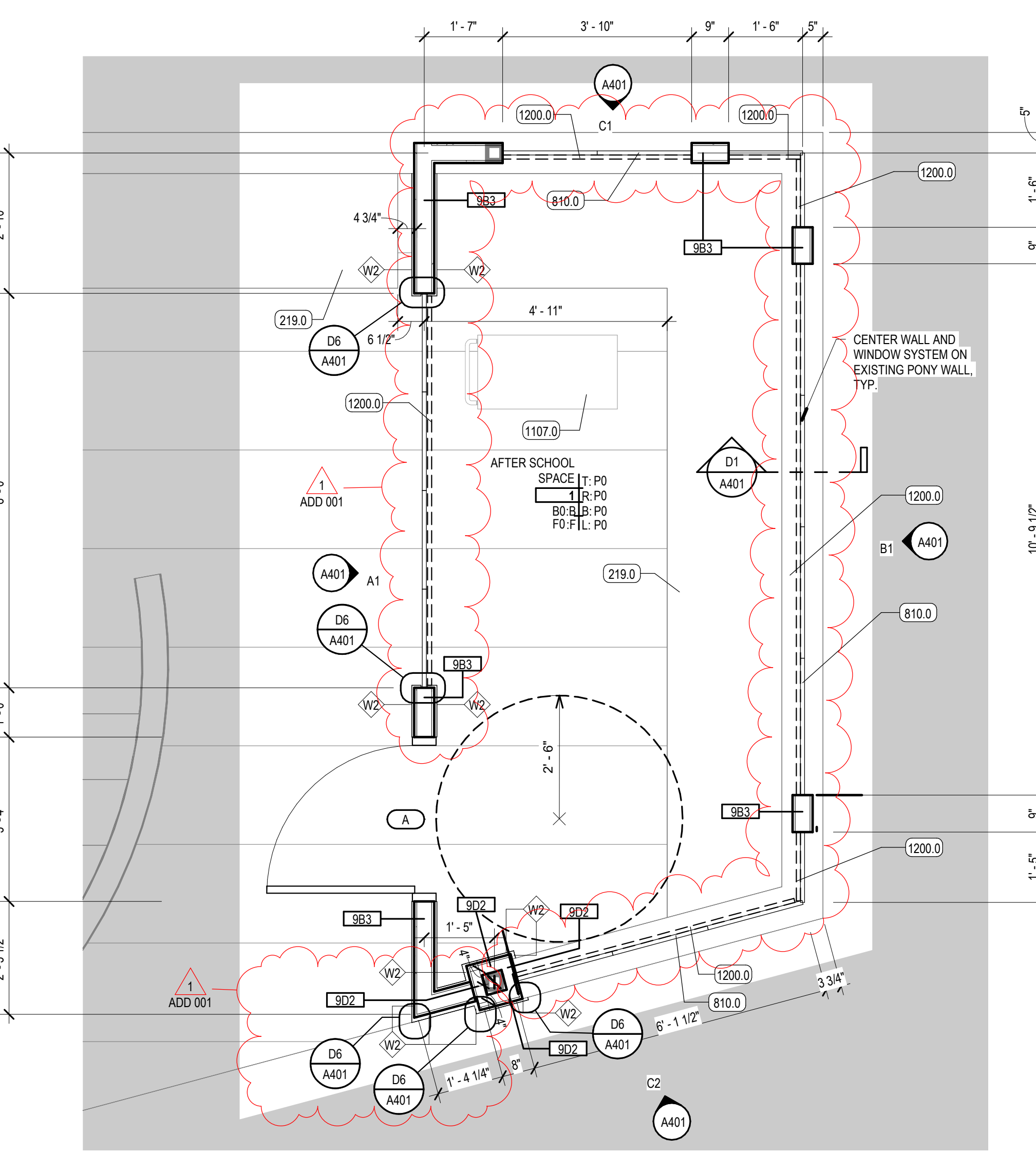
A2 AFTER SCHOOL SPACE - 3D

SCALE: 1/2" = 1'-0"



C4 PLAN - LEVEL 01 - DEMOLITION

SCALE: 3/16" = 1'-0"



A4 PLAN - LEVEL 01 - ANNOTATED

SCALE: 1/2" = 1'-0"

VCBO logo

SALT LAKE CITY - HQ 524 SOUTH 600 EAST SALT LAKE CITY, UT 84102 801.575.8800

ST. GEORGE 20 N. MAIN ST. #103 ST. GEORGE, UT 84770 435.522.7070

VCBO NUMBER: 24285 CLIENT NUMBER: 00000 DATE: 2025-1-28

REV DATE DESCRIPTION 1 2/20/2025 ADD 001

MTN VIEW ELEM - NEW AFTER SCHOOL SPACE 1380 NAVAJO ST #1330, SALT LAKE CITY, UT 84104 PROJECT PHASE

ANNOTATED PLAN - LEVEL 01

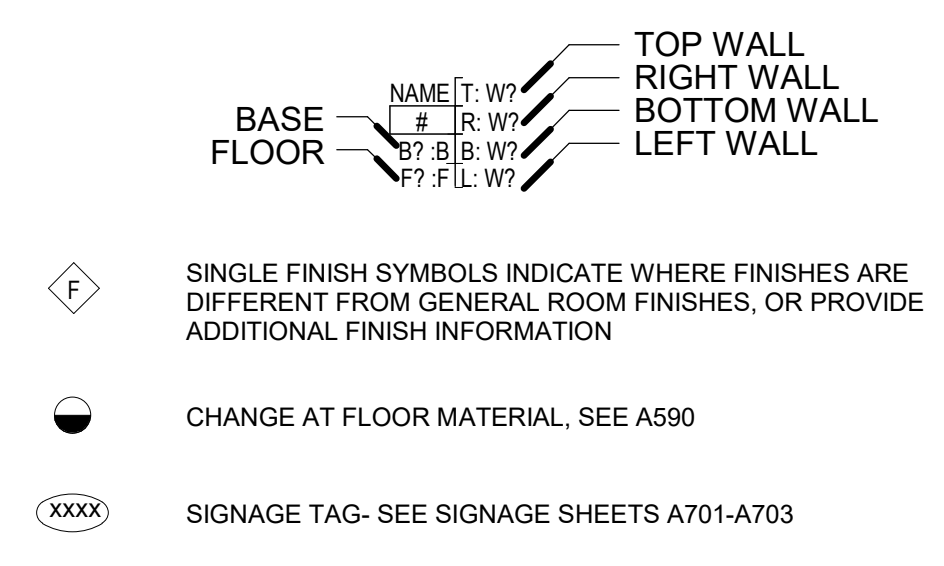
A110.1 2/19/2025 4:28:10 PM



**GLAZING TYPE LEGEND**

MARK	DESCRIPTION
①	3/8" TEMPERED FLOAT GLASS - HEIGHTS UP TO 6'-0"
②	1/2" TEMPERED FLOAT GLASS - HEIGHTS UP TO 5'-0"

**FINISH PLAN SYMBOLS**

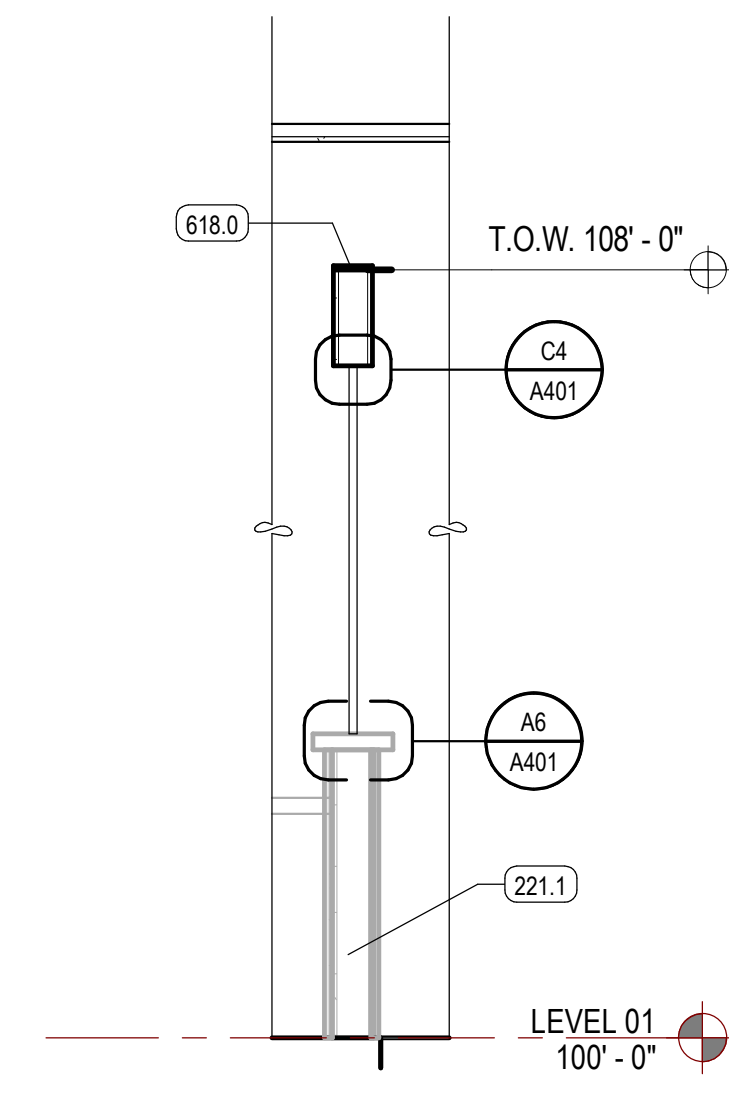


**FINISH PLAN LEGEND**

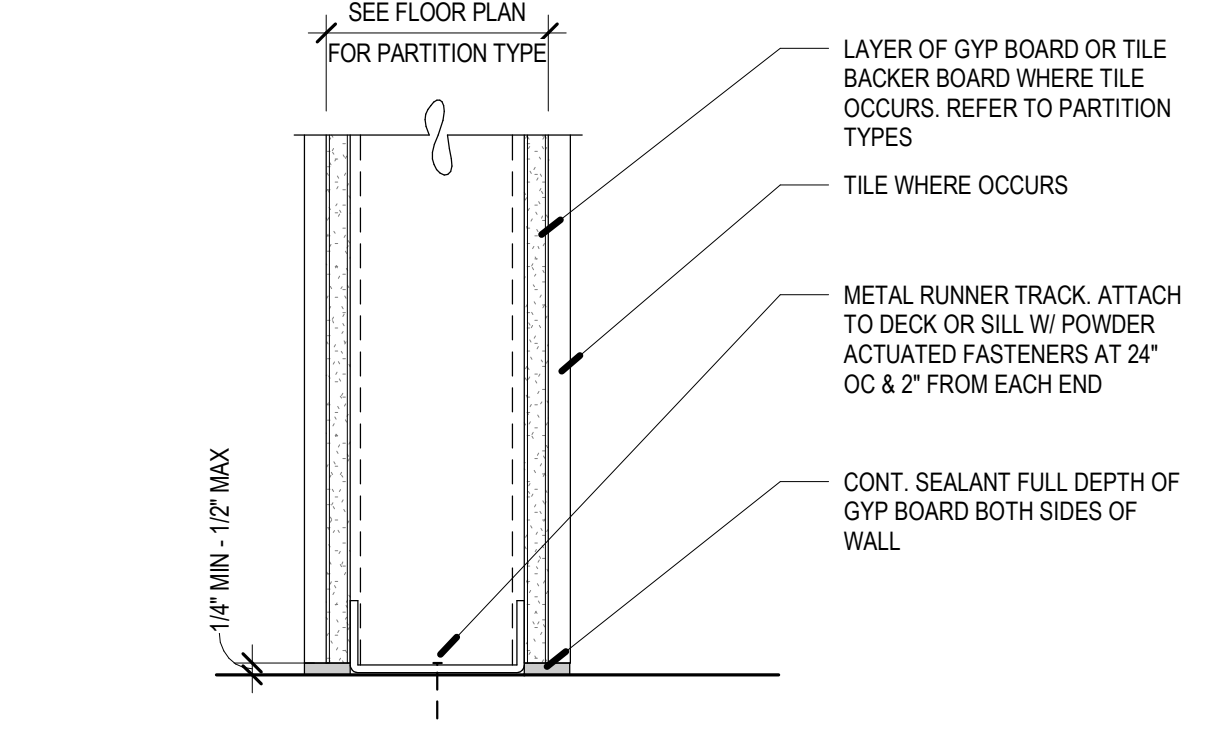
- WALL MATERIALS -**  
 ANY TILE TRANSITIONS TO HAVE SCHLUTER  
 W2 12"x12" PORCELAIN TILE WAINSCOT - SQ 21 BURROW BEIGE, DALTILE CHOICE OR SIM. UP TO EXISTING HEIGHT OR 3'-0" (FIELD VERIFY) - GENERAL PAINT ABOVE
- FLOOR MATERIALS**  
 F0 EXISTING CARPET TILE - PROTECT DURING CONSTRUCTION PATCH AND REPAIR AS NECESSARY.
- BASE MATERIALS**  
 B0 NO BASE - CAULK BETWEEN FLOOR & WALL OR SILL (WHERE OCCURS)
- PAINT**  
 P0 PAINT - GENERAL (WHITE) - MATCH ADJACENT EXISTING PAINT

**KEYED NOTES**

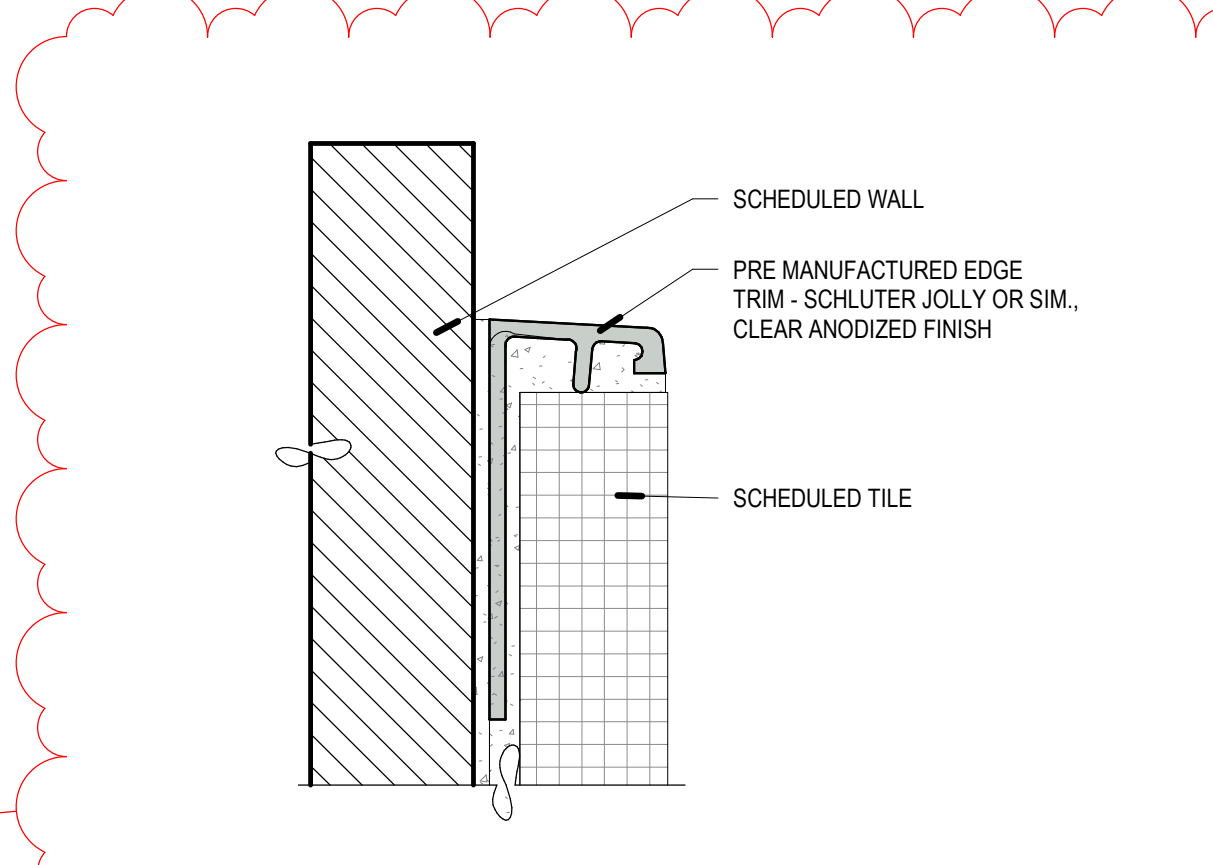
- 221.1 EXISTING WALL TO REMAIN. PROTECT AS NECESSARY. REPAIR AS REQUIRED
- 222.0 EXISTING SOLID SURFACE SILL PORTION TO BE REMOVED. LEAVE TOP OF PONY WALL EXPOSED - PROTECT AS NECESSARY. REPAIR AS REQUIRED. PORTIONS THAT REMAIN
- 223.0 EXISTING 12"x12" WALL TILE
- 618.0 WALL CAP - SOLID SURFACE, POWDER WHITE, WILSONART GIBRALTAR OR SIM.
- 810.0 BUTT GLAZING - TEMPERED
- 904.0 GYPSUM BOARD PAINTED WHERE EXPOSED
- 921.0 12"x12" WALL TILE MATCH EXISTING SIZE AND LAYOUT
- 1200.0 ROLLER SHADES, MANUAL, HUNTER DOUGLAS CE61 1" HORIZONTAL BLINDS OR SIM, CSBA



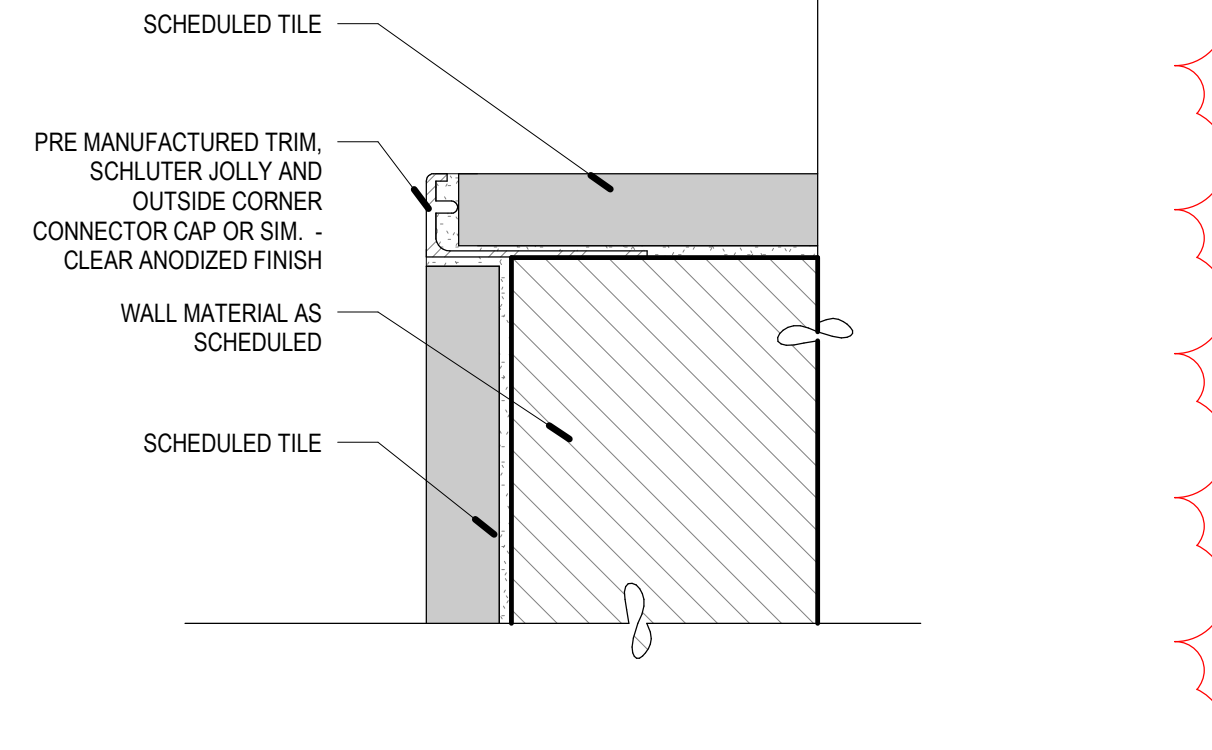
**D1 WALL SECTION 01**  
 SCALE: 1/2" = 1'-0"



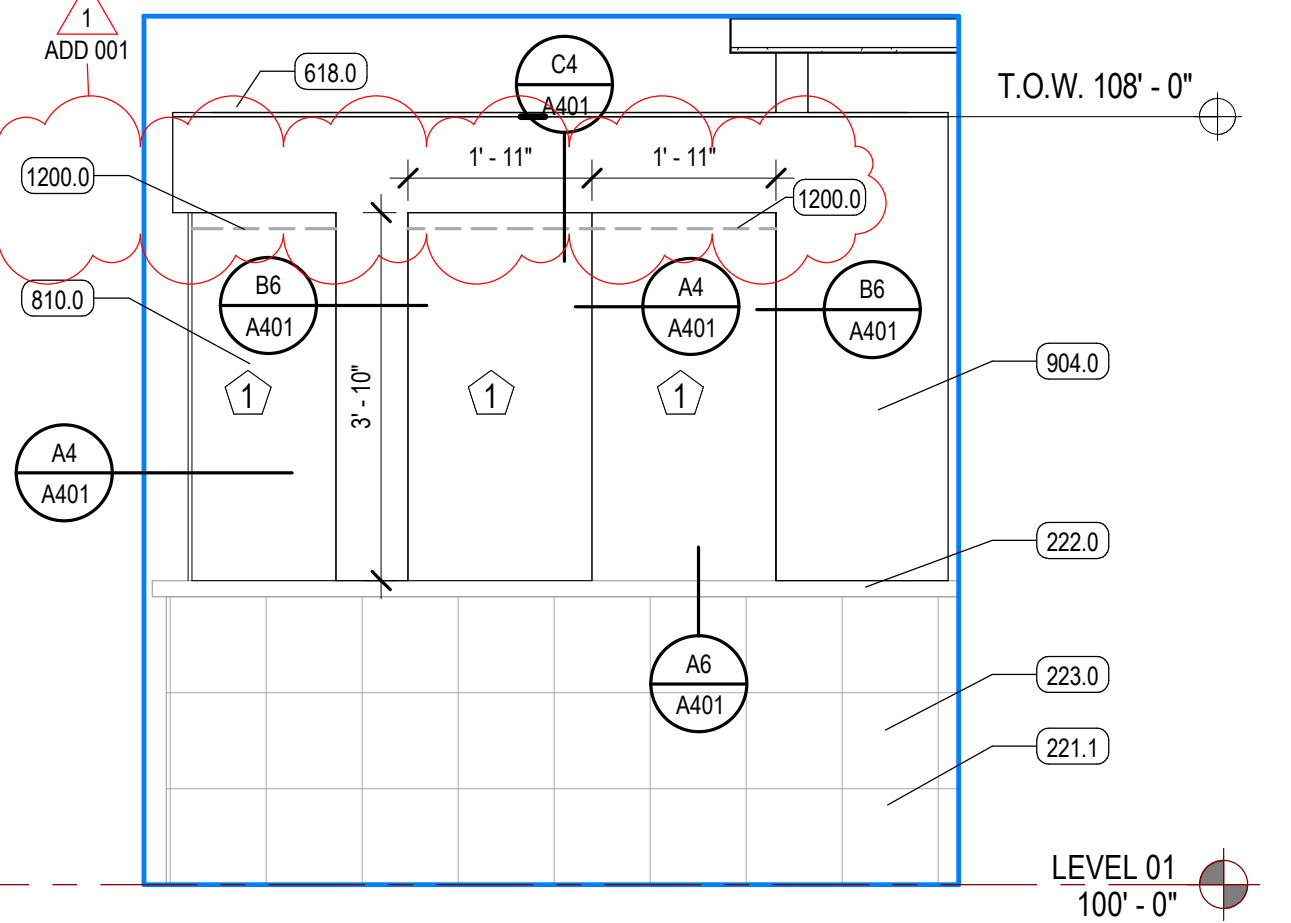
**D2 PARTITION BASE**  
 SCALE: 3" = 1'-0"



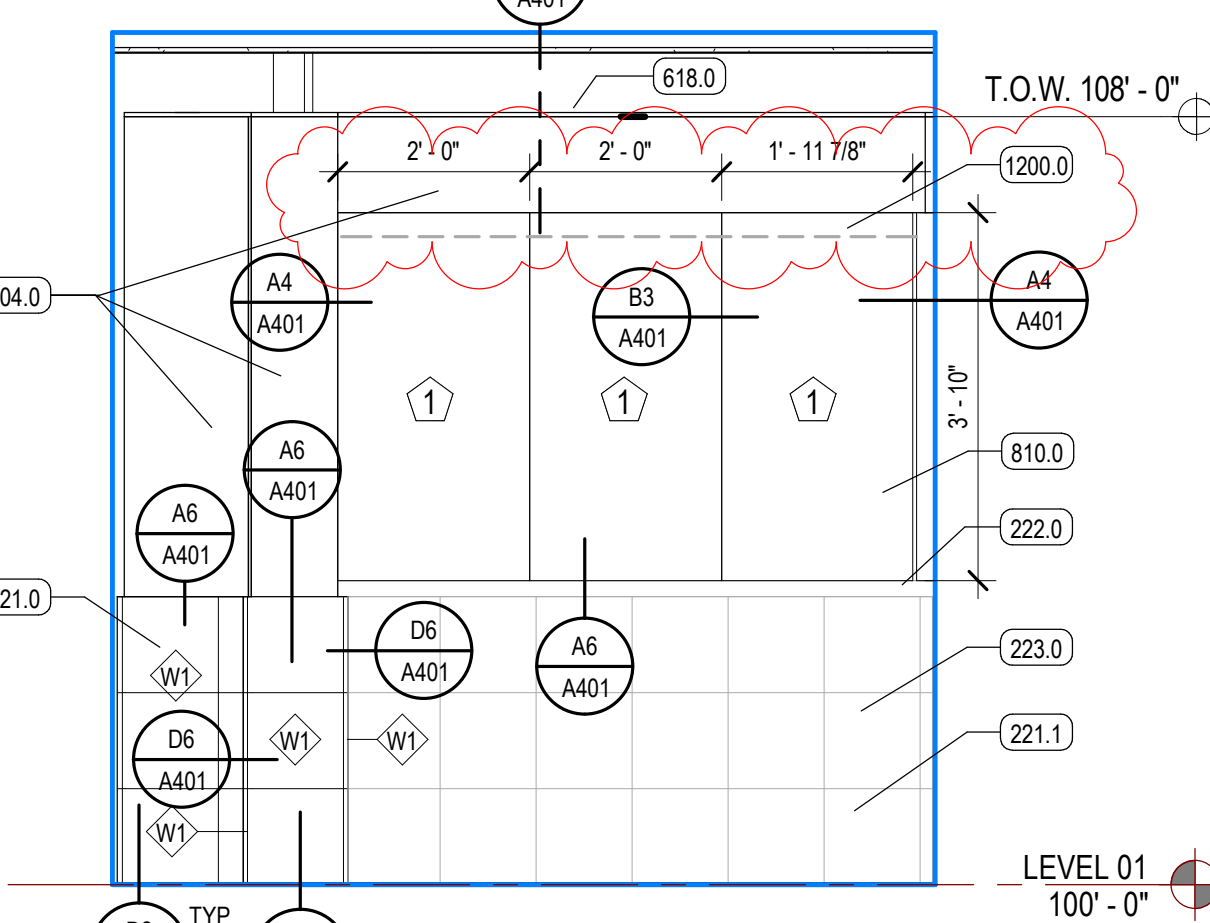
**D4 TYPICAL EXPOSED TILE EDGE DETAIL**  
 SCALE: 1" = 1'-0"



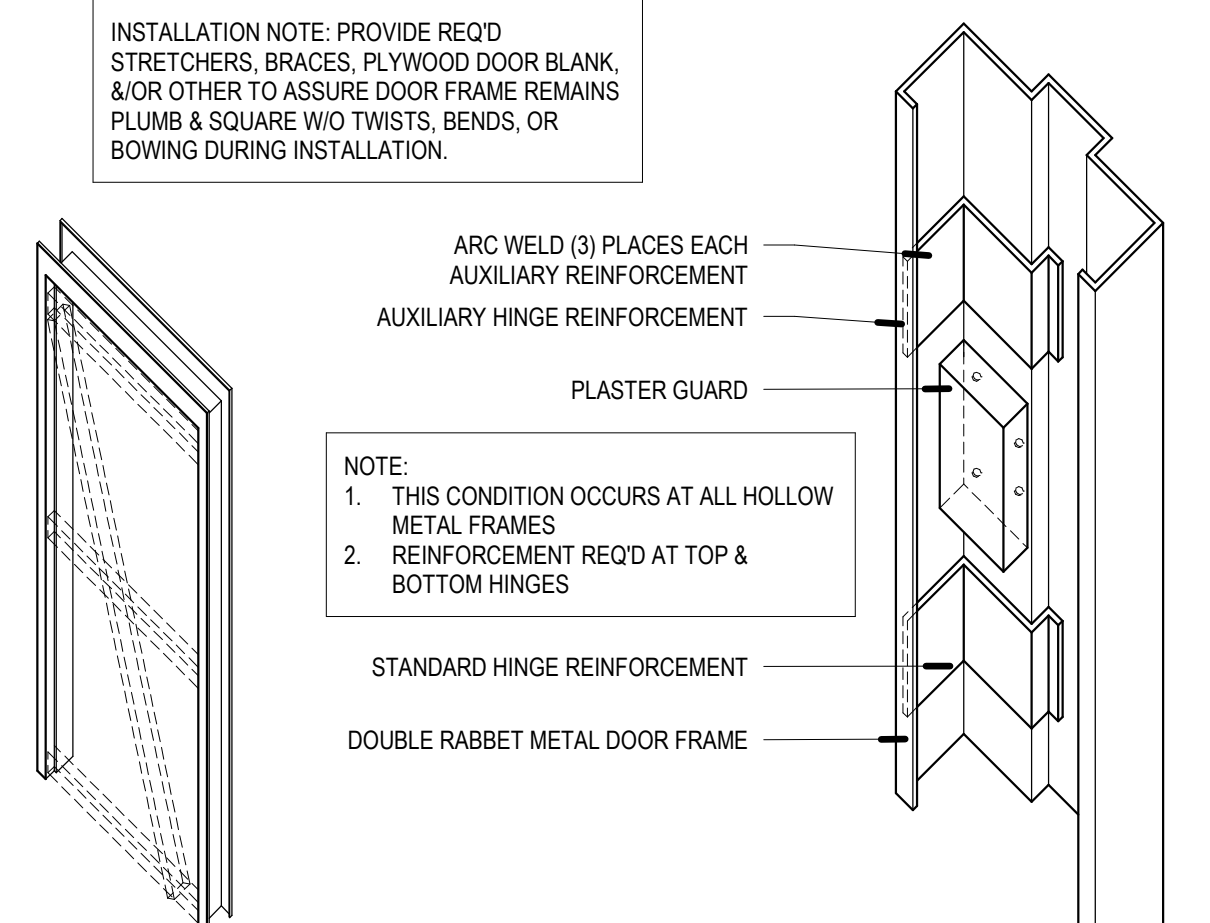
**D6 TYPICAL TILE OUTSIDE CORNER DETAIL**  
 SCALE: 12" = 1'-0"



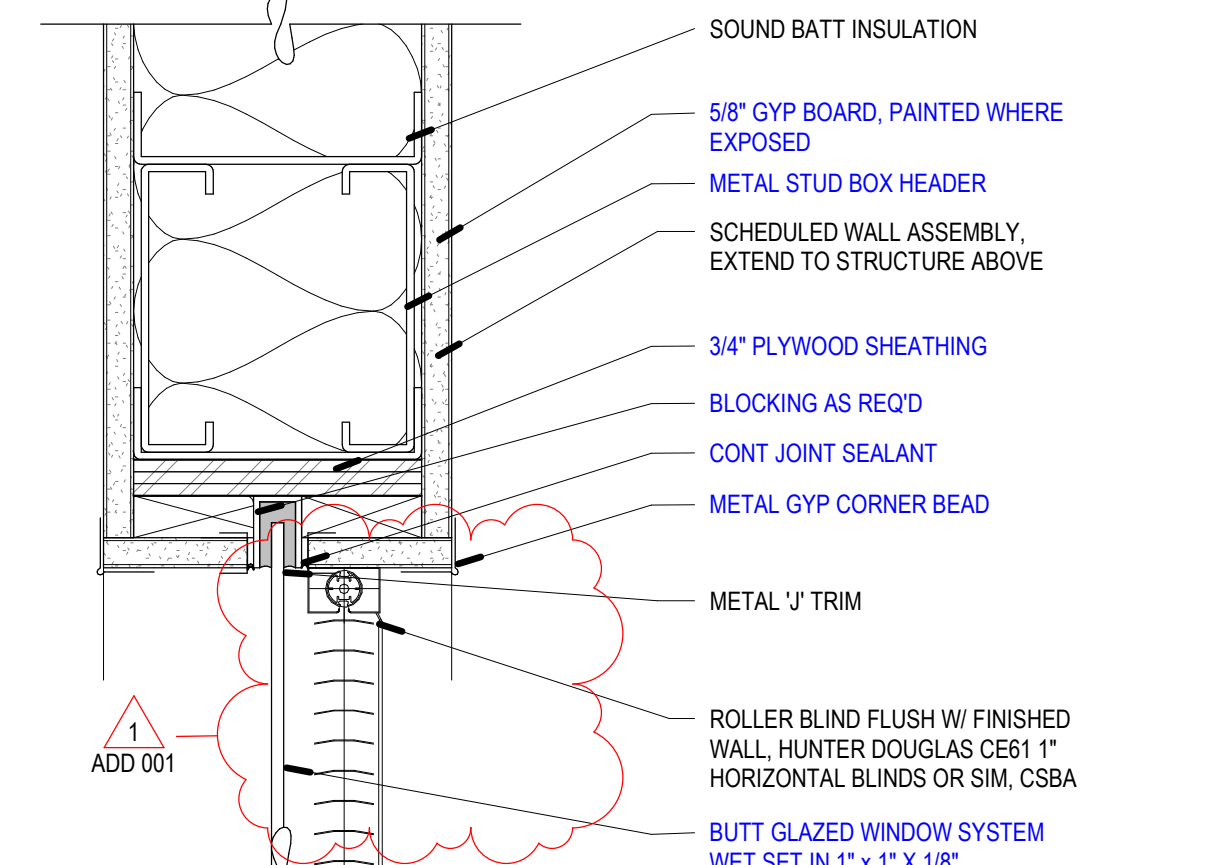
**C1 AFTER SCHOOL SPACE - TOP**  
 SCALE: 1/2" = 1'-0"



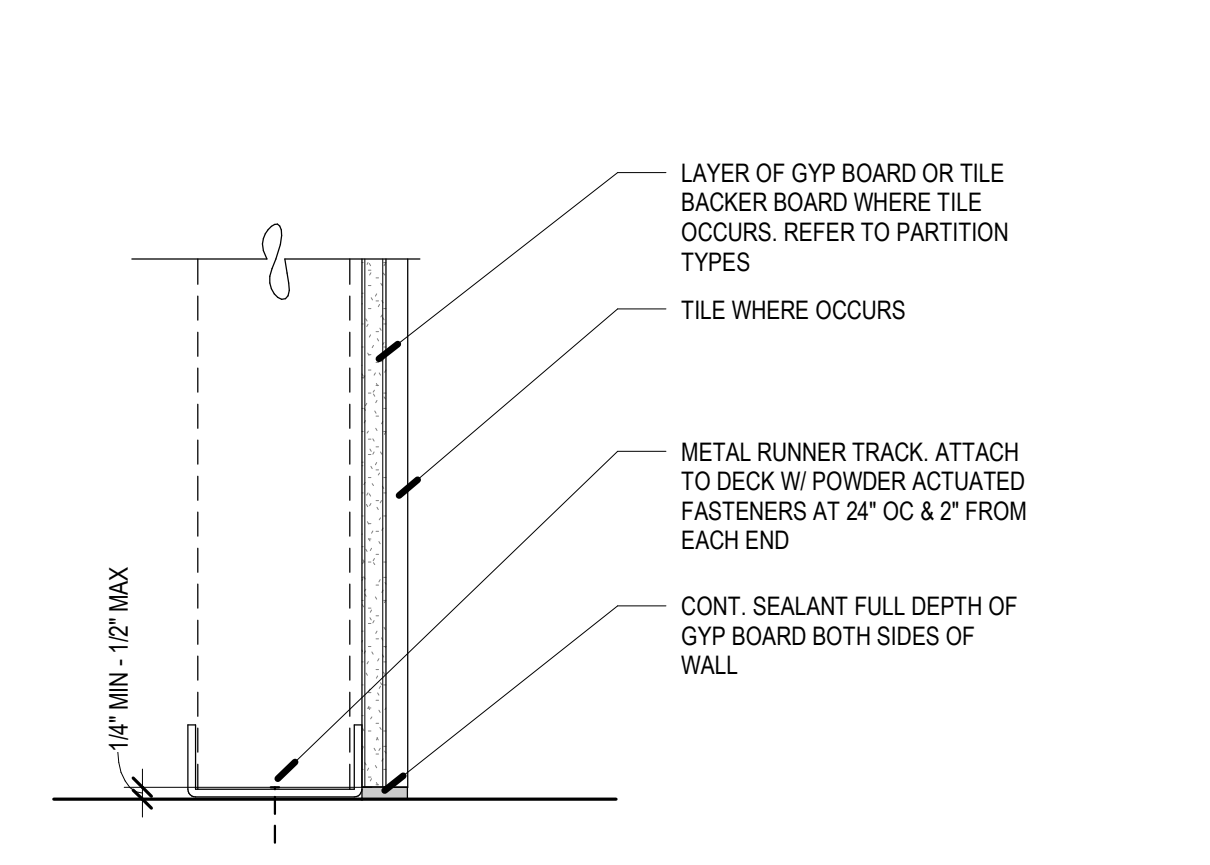
**C2 AFTER SCHOOL SPACE - BOTTOM**  
 SCALE: 1/2" = 1'-0"



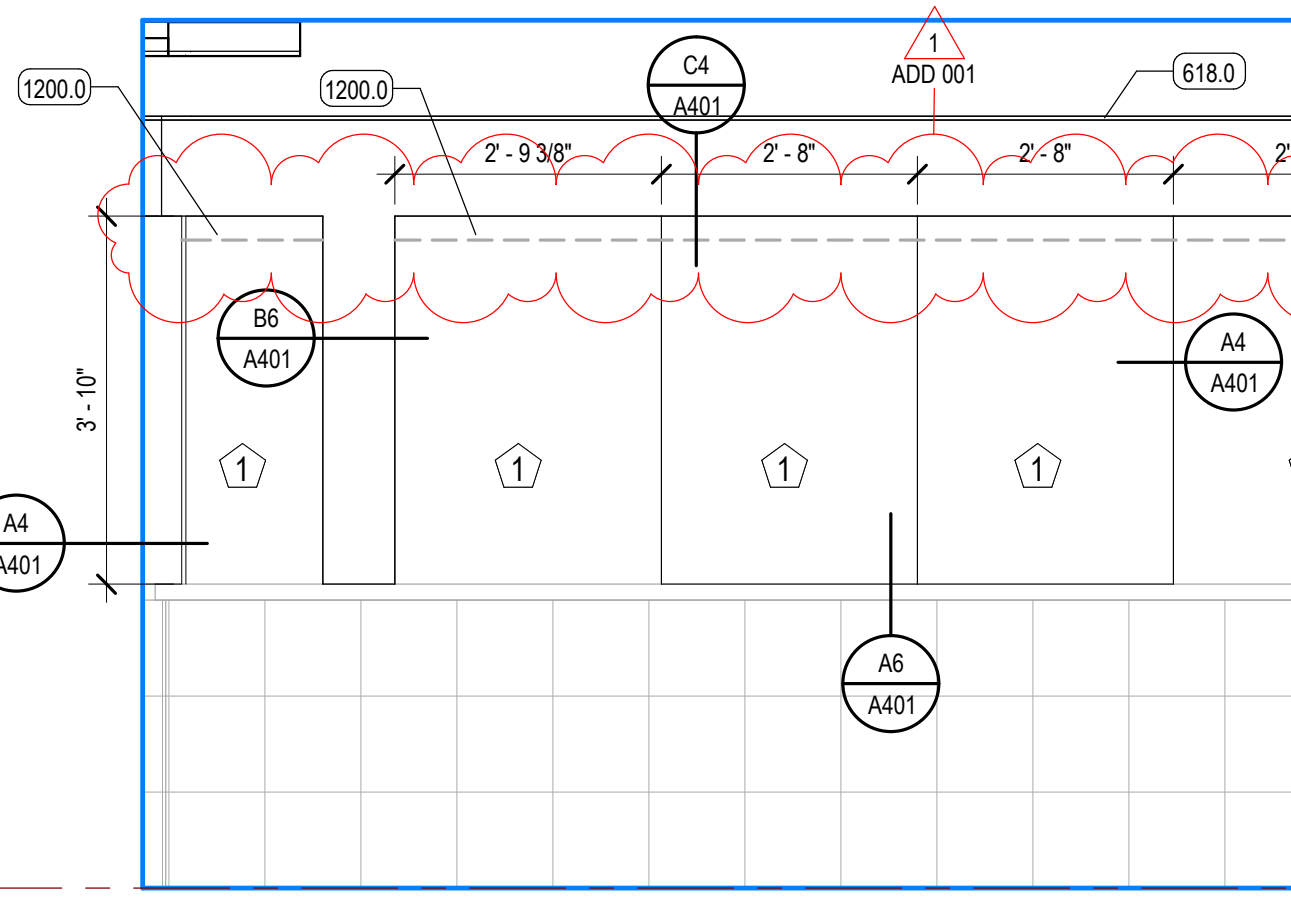
**C3 HM FRAME - TYP**  
 SCALE: 3" = 1'-0"



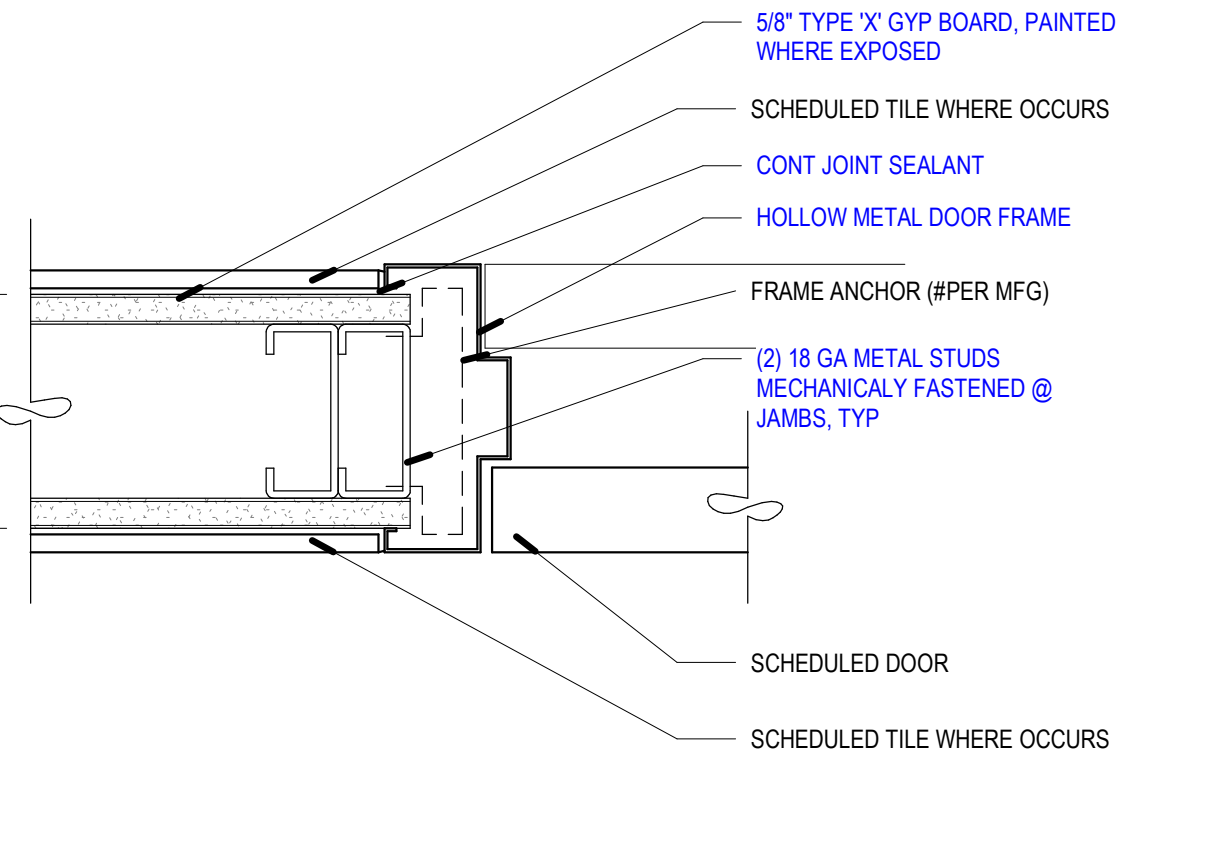
**C4 BUTT GLAZE - HEAD - THIN ALUM FRAME**  
 A1/A401 SCALE: 3" = 1'-0"



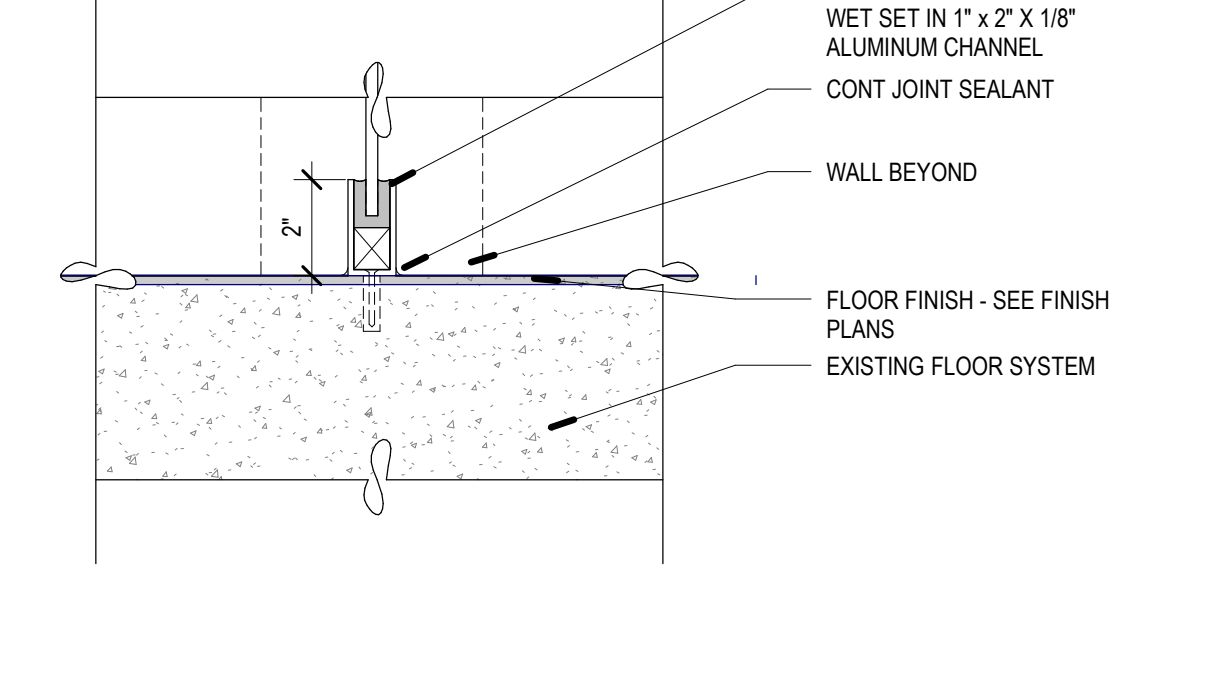
**C6 PARTITION BASE - GYP 1 SIDE**  
 SCALE: 3" = 1'-0"



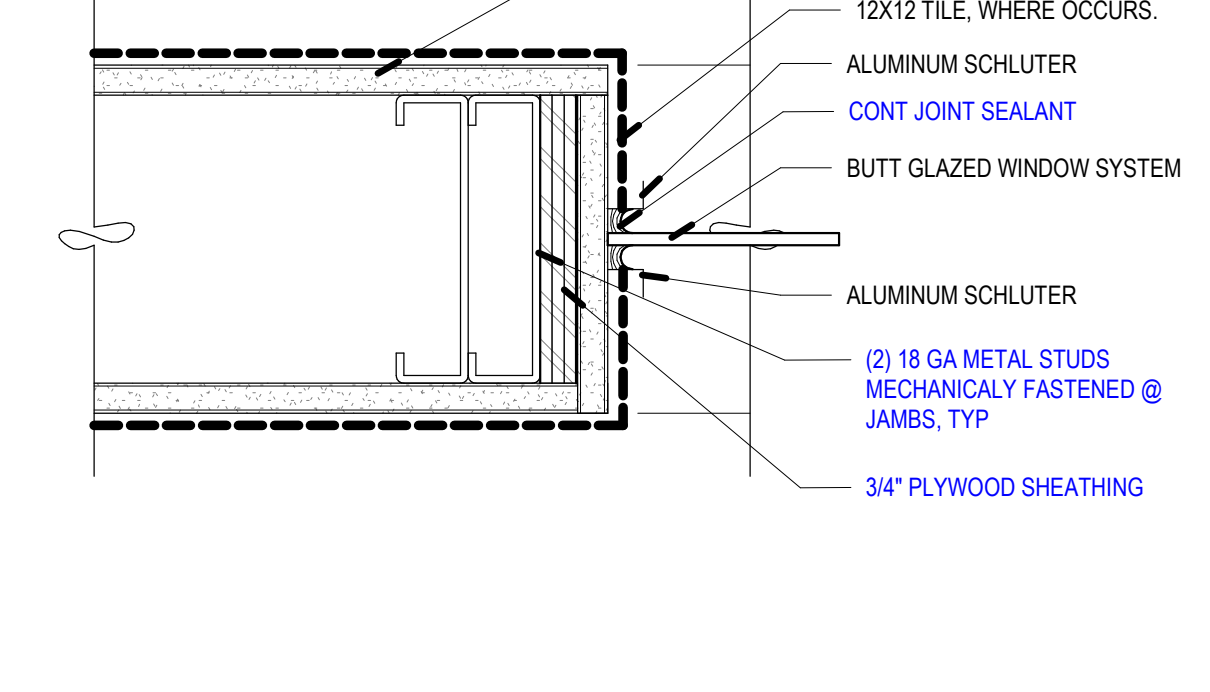
**B1 AFTER SCHOOL SPACE - RIGHT**  
 SCALE: 1/2" = 1'-0"



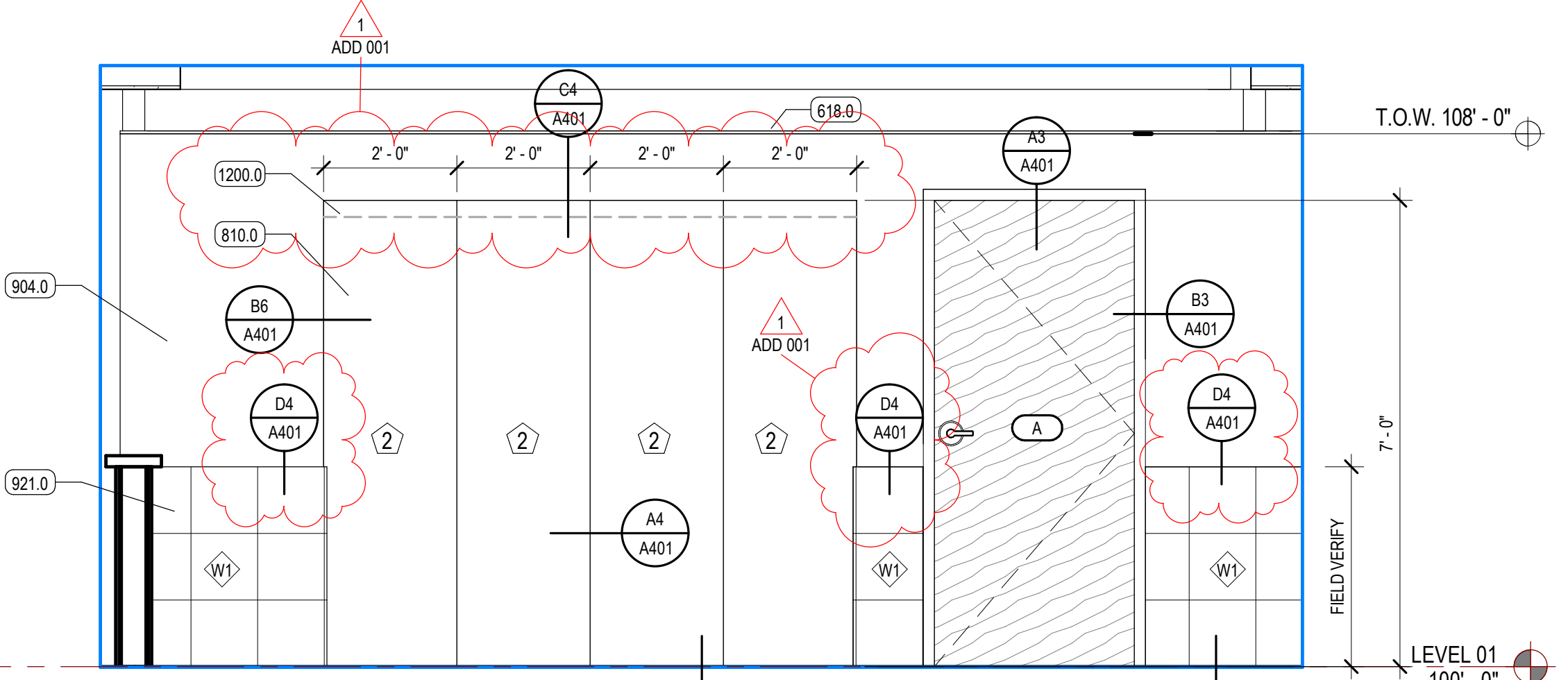
**B3 HM DOOR - JAMB**  
 A1/A401 SCALE: 3" = 1'-0"



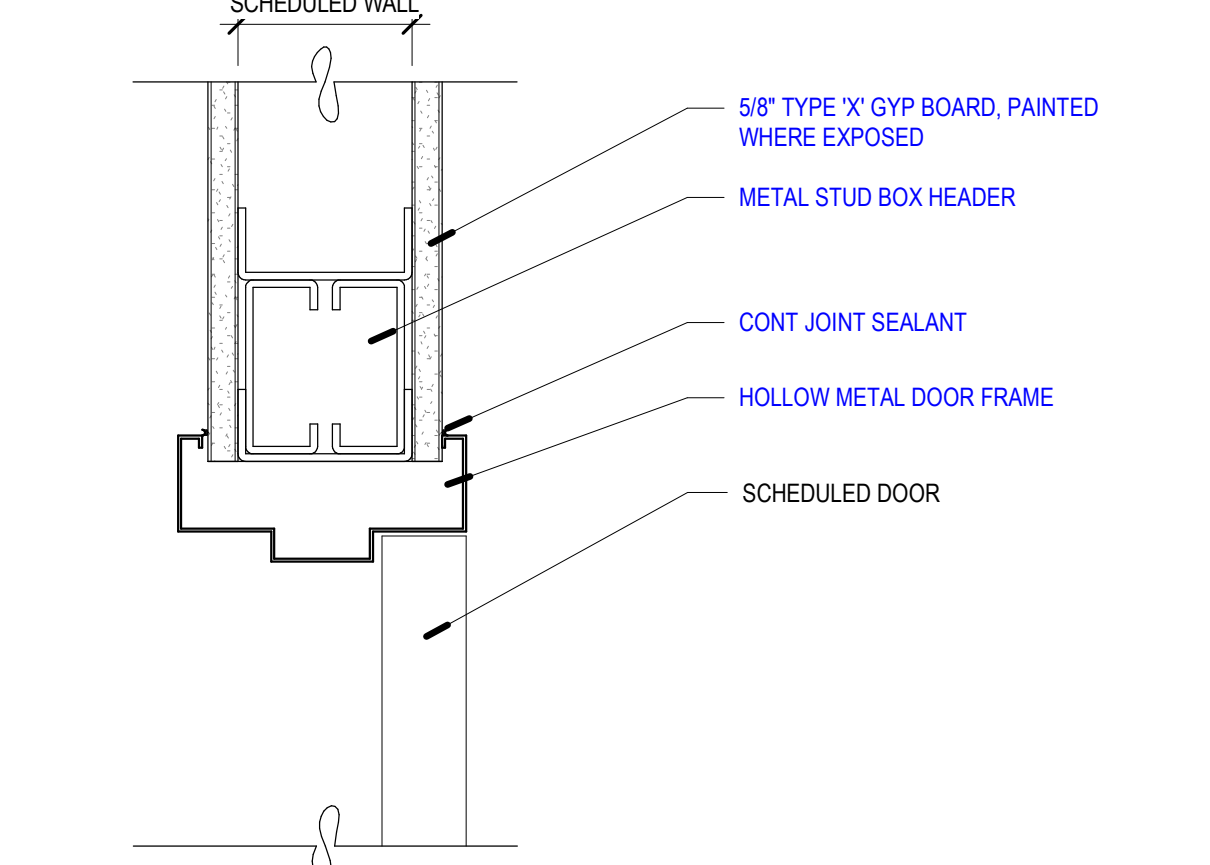
**B4 BUTT GLAZE - 2" SILL - SLAB**  
 SCALE: 3" = 1'-0"



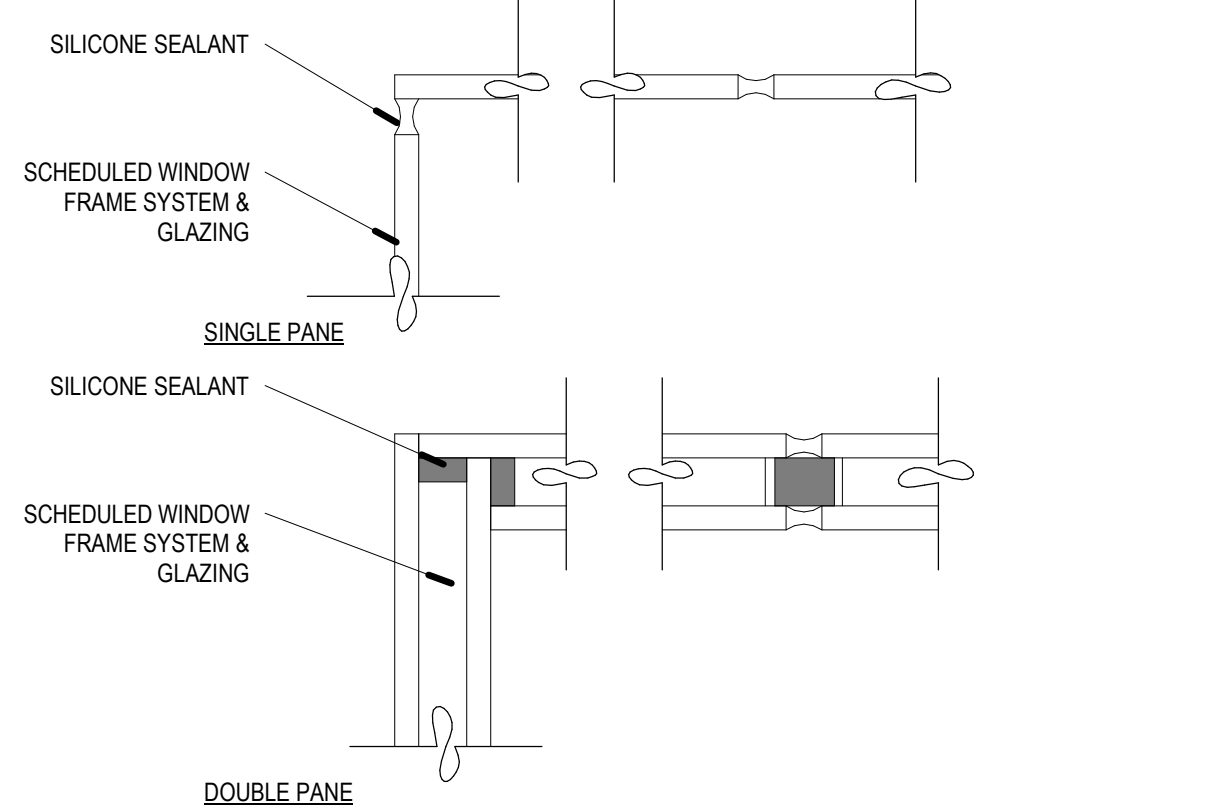
**B6 BUTT GLAZE - JAMB - THIN ALUM FRAME**  
 A1/A401 SCALE: 3" = 1'-0"



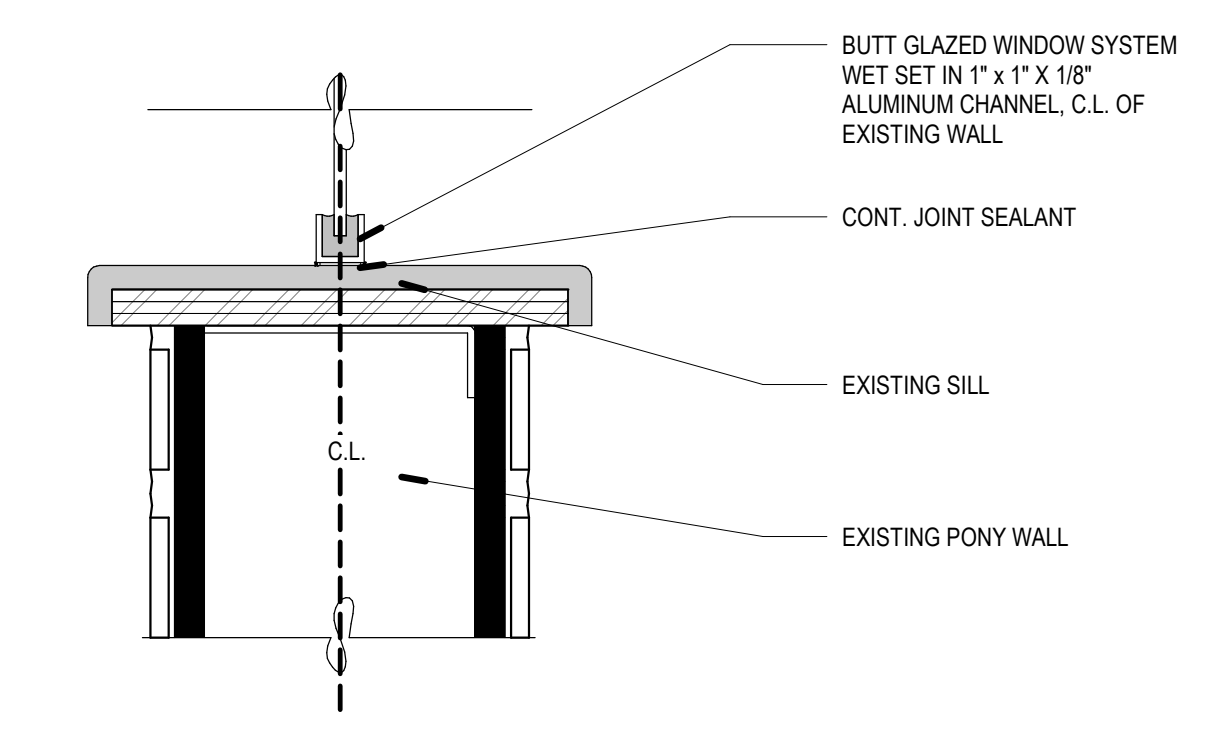
**A1 AFTER SCHOOL SPACE - LEFT**  
 SCALE: 1/2" = 1'-0"



**A3 HM DOOR - HEAD**  
 A1/A401 SCALE: 3" = 1'-0"



**A4 BUTT GLAZE - JAMB - SEAL**  
 A1/A401 SCALE: 6" = 1'-0"



**A6 BUTT GLAZE - SILL - THIN ALUM FRAME**  
 B1/A401 SCALE: 3" = 1'-0"

REV	DATE	DESCRIPTION
1	2/20/2025	ADD 001

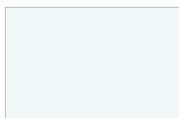
# CE61 1" Aluminum Horizontal Blinds



Ideal for larger installations, our Model CE aluminum blinds feature our sturdiest headrail for 1" blinds. Model CE61 provides good light control with 22mm tape spacing and resilient 1" x .006" slats.

## KEY FEATURES

- 1" x 1 1/2" x .024" Headrail
- Heat-treated, spring-tempered aluminum slats
- Clutch tilter prevents over-rotation of slats
- Closed oval steel bottom rail provides optimal strength to prevent bowing
- Slats contain 95% recycled aluminum content and are GREENGUARD Indoor Air Quality Certified®
- Cord stop to single cord pull
- Lifetime Guarantee



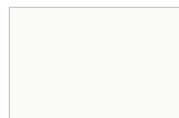
885 Flex White



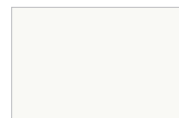
110 Gloss White



001 Glacier White



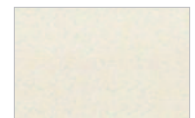
127 Linen Flirt



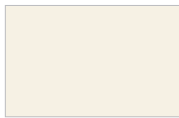
974 Pearl



002 Alabaster



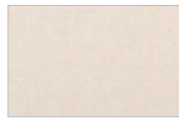
830 Almond



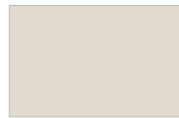
973 Antique White



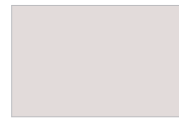
268 Crème de la Crème



269 Chenille



205 Fawn



795 Surf



748 Shadow Gray



065 Brushed Aluminum



064 Bronze



C O N S S 0 9 C E 6 1

## HunterDouglasContract

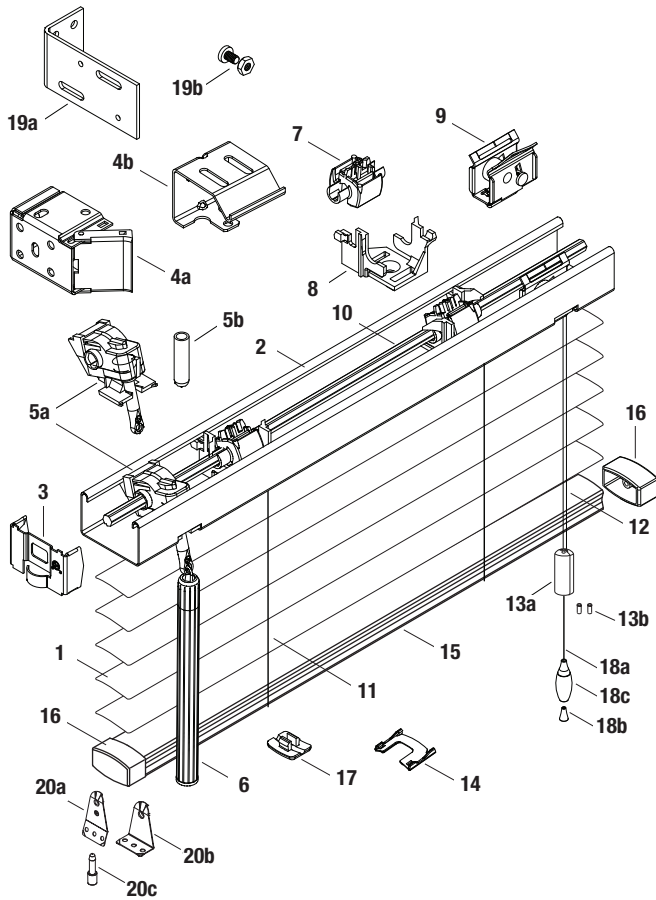
WINDOW COVERINGS

© Copyright Hunter Douglas Contract 2009

® Hunter Douglas and its product names are registered trademarks

® The GREENGUARD INDOOR AIR QUALITY CERTIFIED mark is a registered certification mark used under license through the GREENGUARD Environmental Institute.





**STANDARD COMPONENTS:**

1. Slat
2. Headrail
3. End Lock
- 4a. Box Installation Bracket
- 4b. Intermediate Support Bracket
- 5a. Wand Tilter
- 5b. Tilter Protector
6. Wand
7. Tape Roll
8. Tape Roll Support
9. Cordlock Assembly
10. Tilt Rod
11. Cable Tape Ladder
12. Lift Cord 1.4mm
- 13a. Cord Stop
- 13b. Safety Tassel Grommet
14. Tape Spacer
15. Bottom Rail
16. Bottom Rail End Cap
17. Tape Button
- 18a. Lift Cord
- 18b. Conical Tassel Washer
- 18c. Tassel

**OPTIONAL COMPONENTS:**

- 19a. Extension Bracket
- 19b. Extension Bracket Screw and Nut
- 20a. Hold-Down Bracket (Jamb)
- 20b. Hold-Down Bracket (Sill)
- 20c. Hold-Down Pin

## PRODUCT SPECIFICATIONS

### PART 2 – PRODUCTS

#### 2.01 ACCEPTABLE MANUFACTURER

- A.** Hunter Douglas Contract/ 12250 Parkway Centre Dr. / Poway, CA 92064/  
Phone: 800-727-8953 Fax: 800-205-9819/ Website: www.hunterdouglascontract.com,  
or architect approved equivalent. Contact the following for project assistance and  
dealer referral @ 800-964-2580: (Mideast/Midwest) Keith Burgess ext. #827311,  
(Southern/Central) Christopher Hagen ext. #827312, (Western/Mountain/Upper  
Midwest) David Cover ext. #827313, (Northeast) Patrick LeClair ext. #827314.

- B.** Product substitutions must be approved by architect minimum of 30 days prior to close of bid.

#### 2.02 1" MINI HORIZONTAL ALUMINUM BLINDS

- A. PRODUCT:** Hunter Douglas "CE61 1" Aluminum Blind"

**B. MATERIALS:**

1. **SLATS:** 1" wide x .006" thick, heat-treated and spring tempered (except 5000 series alloy on metallized finishes) aluminum alloy 6011 with eased corners and manufacturing burrs removed. Product to have a minimum of 95% pre-consumer recycled content. Furnish not less than nominal 13.8 slats per foot to ensure tight closure and light control. Finish with manufacturer's standard baked-on finish in colors selected by architect from manufacturer's available contract colors utilizing Dust Shield™ finish to inhibit dust build-up for easier maintenance.
2. **SLAT SUPPORT:** Braided ladders of 100% polyester yarn color compatible with slats and spacing of ladder no more than 20mm.
3. **HEADRAIL:** U-shaped profile with rolled edges, measuring 1" x 1 1/2" x .024" constructed of corrosion resistant steel. Internally fit with components required for specified performance and designed for smooth, quiet, trouble-free operation. Headrail finish to be standard baked-on polyester and to match slats. Ends fitted with .030" steel end lock with adjustable tab for centering blinds.
4. **BOTTOM RAIL:** Steel, with corrosion-resistant finish formed with double-lock seam into closed oval shape for optimum beam and torsional strength. Ends fitted with

color-coordinated engineered polymer caps. Color-coordinated engineered polymer tape buttons secure the ladder and cord. Bottom Rail finish to be standard baked-on polyester color coordinated to slats.

5. **LIFTING MECHANISM:** Crashproof steel cordlocks with corrosion-resistant finish, two-ply polyester cord filler in braided polyester jacket lift cords, cord equalizers, cordlock adapter, and Cord Stop/Single Pull Cord. Located on either side of individual blind unit as per architect's request.
6. **TILTING MECHANISM:** Permanently lubricated die-cast worm and gear type tilter gear mechanism in fully enclosed housing with clutch action to protect ladder tapes from over rotation of the solid steel, corrosion resistant tilt rod.
7. **TILT CONTROL WAND:** Tubular shaped 7/16" diameter extruded clear plastic, ribbed for positive grip and detachable without tools. Located on either side of individual blind unit as per architect's request.
8. **MOUNTING HARDWARE:** Manufacturer's standard .042" steel box brackets with baked-on polyester finish to match headrail with additional support brackets for blinds over 60" wide.
9. **ADDITIONAL AVAILABLE OPTIONS:** Limited Tilt, Ring Pulls, Pivot Plates, Two-Position Cord Locks, Color Striping, 2 or 3 Blinds on 1 Headrail, Valances, Side Channels (limited colors available), Hold Down Brackets, Cutouts.

#### 2.03 FABRICATION

- A.** Blind measurements shall be accurate to within + 1/8" or as recommended in writing by manufacturer.

#### 2.04 FINISHES

- A.** **SLAT** finish selection from the following: 001 Glacier White, 002 Alabaster, 064 Bronze, 065 Brushed Aluminum, 110 Gloss White, 127 Linen Flirt, 205 Fawn, 268 Crème de la Crème, 269 Chenille, 270 Linen, 748 Shadow Gray, 795 Surf, 830 Almond, 885 Flex White, 973 Antique White, 974 Pearl.

- B.** **SLAT SUPPORT** braided ladders shall be color coordinated with slat.

## SECTION 00 7300

### SUPPLEMENTARY GENERAL CONDITIONS

- A. The Supplementary Conditions herein described, contain changes and additions to Section 00 7000 - AIA Document A201, 2017 edition, General Conditions of the Contract for Construction. Where any part of the General Conditions is modified by these Supplementary Conditions, the unaltered provisions shall remain in effect.

#### ARTICLE 1 CONTRACT DOCUMENTS

**Add** the following:

"1.1.1.1 The Invitation to Bid and Bid Proposal Form shall be part of the Contract Documents."

**Add** the following:

"1.2.1.2 Where a conflict exists in the Contract Documents, the greater quantity, higher quality, or more restrictive requirement, as determined by the Architect, shall apply."

**Add** the following:

"1.5.3 Release of Electronic Media Drawing Files: An agreement titled "Agreement Concerning Drawing Files on Electronic Media" must be signed and returned to VCBO Architecture prior to release of any documents. A copy of the release is attached at Section 05 433.

#### ARTICLE 3 CONTRACTOR

**Delete** original paragraph 3.7.1 and substitute the following:

"3.7.1 The Contractor shall secure and the Owner shall pay for any permits, fees, and inspections required by work included in this Contract. All licensing shall be secured and paid for by Contractor."

**Add** the following:

"3.8.4 At close-out of Contract, funds remaining in the Contingency Allowance will be credited to the Owner by Change Order."

**Modify** the following:

3.10.1 **Delete** in the first sentence "... promptly..." and **substitute** "... within 24 hours..."

**Add** at the end of 3.10.1:

"This schedule shall be prepared in accordance with the requirements outlined in **Section 01 3300, Submittals** (1.3)."

**ARTICLE 5 SUBCONTRACTORS**

*Modify* the following:

5.2.1 *Delete* in the first sentence "... as soon as practicable..." and *substitute* "... within 24 hours..."

*Delete 5.2.4* and substitute the following:

"5.2.4 The Contractor shall not change a Subcontractor, person or entity previously selected without written notification and approval of the Owner and Architect."

**ARTICLE 7 CHANGES IN THE WORK**

*Add* the following:

"7.1.4 Subcontractors shall be limited to ~~40 percent~~ **5 percent** mark-up for allowed profit and overhead on proposed changes and modifications. CM/GC shall be limited to 10 percent mark-up for allowed profit and overhead on proposed changes and modifications."

**ARTICLE 8 TIME**

*Add* the following:

**"8.4 Liquidated Damages**

- .1 The Contractor and Contractor's Surety shall be liable for and shall pay the Owner the sums hereinafter stipulated as liquidated damages of One Thousand Dollars per Day (\$1000.00) for each calendar day of delay beyond the scheduled completion date until Work is substantially complete and One Hundred Dollars per day (\$100.00) for each calendar day of delay for shop drawings/submittals received beyond 90 days after Notice of Award. Each trade shall complete their respective work within the General Contractor's construction schedule.
- .2 Should the Contractor fail to complete the work within the General Contractor's construction schedule included herein, or within such additional time as may have been allowed by extension, there shall be deducted from any moneys due or that may become due the Contractor the sum as stated in the Agreement. Such sum is fixed and agreed upon by the Owner and the Contractor as liquidated damages due the Owner by reason of the inconvenience and added costs of administration, engineering, and supervision resulting from the Contractor's default, and not as a penalty.
- .3 Permitting the Contractor to continue and finish the Work or any part of it after the time fixed for its completion, or after the date to which the time for completion may have been extended, shall in no way operate as a waiver on the part of the Owner of any of his rights under the agreement.
- .4 Protection of the top of masonry walls shall be provided as indicated in Division 4 Section "Unit Masonry Assemblies" or a liquidated damage amount of \$500.00 per calendar day shall be assessed for each day the top of masonry is not protected."



**ARTICLE 9 PAYMENTS AND COMPLETION**

*Add* the following:

"9.3.1.3 Payments made shall be 95 percent of scheduled values requested by each application for payment. Retainage shall be 5 percent and shall be retained until application for final payment is made at the completion of work. Amounts withheld as retainage will be held in an interest bearing account."

**ARTICLE 11 INSURANCE AND BONDS**

*Add* the following:

"11.1.1.1 Insurance limits are defined in "Invitation to Bid", prepared by the Contractor."

*Add* the following:

"11.1.1.2 The Owner and Architect shall be named as additional insured in the policies required by the Contract Documents."

**ARTICLE 12 UNCOVERING AND CORRECTION OF WORK**

*Add* the following;

"12.2.6 Special Project Warranty: Contractor shall warrant the Work of this Contract, in which Contractor agrees to repair or replace all assemblies and components that fail to remain weather-tight, including leaks, including but not limited to, all components of the membrane roofing system, flashings, rooftop mounted accessories or equipment, windows and glazing, doors and frames, storefronts and curtain walls, sealants, exterior wall coverings or claddings, for the following warranty period:  
1. Weather-tight Warranty Period: Three years from date of Substantial Completion."

**ARTICLE 13 MISCELLANEOUS PROVISIONS**

*Add* the following:

"13.6 INDEMNIFICATION

13.6.1 To the fullest extent permitted by law, Contractor shall indemnify, defend, and hold harmless Owner and Architect and their agents, affiliates, and employees from and against all claims, liabilities, damages, losses, and expenses, including but not limited to attorneys' fees, arising out of or resulting from the performance of the work, provided that any such claim, liability, damage, loss or expense (1) is attributable to bodily injury, sickness, disease, or death, or to injury to or destruction of tangible property (other than the Work itself) including the loss of use resulting therefrom (other than the Work itself or Owner's property), and (2) is caused by whole or in part by an negligent act or omission of Contractor, any Subcontractor, anyone directly or indirectly employed by any of them, or anyone for whose acts any of them may be liable, regardless of whether or not it is caused in part by a party indemnified hereunder. Such obligation shall not be construed to negate, abridge, or otherwise reduce any other right or obligation of indemnity which would otherwise exist as to any party or person described in this Paragraph 4.18 or in Article 17 hereof.

13.6.2 In any and all claims against Owner or Architect or any of their agents or employees by any employee of Contractor, any Subcontractor, anyone directly or indirectly employed by any of them, or anyone for whose acts any of them may be liable, the indemnification obligation under this Paragraph 4.18 shall not be limited in any way by an limitation on the amount or type of damages, compensation, or benefits payable by or for Contractor or any Subcontractor under workers' compensation acts, disability benefit acts, or other employee benefit acts.”

**END OF SECTION**

**SECTION 06 2000**  
**FINISH CARPENTRY**

**PART 1 - GENERAL**

**1.1 RELATED DOCUMENTS**

- A. Drawings and general provisions of the Contract, including General and Supplementary Conditions and Division 1 Specification Sections, apply to this Section.

**1.2 SUMMARY**

- A. This Section includes the following:
  - 1. Solid surfacing material for window sills and wall caps.
  - 2. Miscellaneous wood trim, including hardwood plywood.
- B. Related Sections:
  - 1. Section 06 1050 "Miscellaneous Rough Carpentry" for furring, blocking, and other carpentry work not exposed to view.
  - 2. Section 09 2216 "Non-Structural Metal Framing" for installation of sheet metal strips coordinated with spacing of finish plywood panel fasteners.
- 3.

**1.3 SUBMITTALS**

- A. Product Data: Provide product data for each type of factory-fabricated product and process specified, including details of construction relative to materials, dimensions of individual components, profiles, textures, and colors.

**1.4 QUALITY ASSURANCE**

- A. Installer Qualifications: Engage an experienced Installer who has completed finish carpentry similar in material, design, and extent to that indicated for this Project and with a record of successful in-service performance.

**1.5 DELIVERY, STORAGE, AND HANDLING**

- A. Delivery and Storage: Keep materials under cover and dry. Protect against exposure to weather and contact with damp or wet surfaces. Stack lumber, plywood, and other panels. Provide for air circulation within and around stacks and under temporary coverings.
- B. Environmental Conditions: Do not deliver interior finish carpentry until environmental conditions meet requirements specified for installation areas. If finish carpentry must be stored in other than installation areas, store only where environmental conditions meet requirements specified for installation areas.

**1.6 PROJECT CONDITIONS**

- A. Environmental Limitations: Do not deliver or install interior finish carpentry until building is enclosed and weatherproof, wet-work in space is completed and nominally dry, and HVAC system is operating and will maintain temperature and relative humidity at occupancy levels through the remainder of construction period.



## **PART 2 - PRODUCTS**

### **2.1 MATERIALS, GENERAL**

- A. Lumber Standards: Comply with DOC PS 20, "American Softwood Lumber Standard," for lumber and with applicable grading rules of inspection agencies certified by American Lumber Standards Committee Board of Review.
- B. Inspection Agencies: Inspection agencies, and the abbreviations used to reference them, include the following:
  - 1. NHLA - National Hardwood Lumber Association.
  - 2. RIS - Redwood Inspection Service.
  - 3. SPIB - Southern Pine Inspection Bureau.
  - 4. WCLIB - West Coast Lumber Inspection Bureau.
  - 5. WWPA - Western Wood Products Association.
- C. Grade Stamps: Provide lumber with each piece factory marked with grade stamp of inspection agency evidencing compliance with grading rule requirements and identifying grading agency, grade, species, moisture content at time of surfacing, and mill.
  - 1. For exposed lumber, furnish pieces with grade stamps applied to ends or back of each piece, or omit grade stamps entirely and provide certificates of grade compliance issued by inspection agency.

### **2.2 INTERIOR STANDING AND RUNNING TRIM**

- A. Hardwood Trim: Provide finished hardwood lumber and moldings complying with the following requirements:
  - 1. Species: Clear, kiln-dried select white maple.
  - 2. Texture: Surfaced (smooth).
  - 3. Lumber for Transparent Finish (Stained or Clear): Solid lumber stock.
  - 4. Lumber for Painted Finish: Glued-up lumber or solid lumber stock.

### **2.3 INTERIOR WOOD PANELING**

- A. General: Provide wood wall paneling as indicated on Drawings and as indicated below.
  - 1. Quality Standard: Comply with AWS Section 4.
  - 2. Grade: Premium.
  - 3. Wood Species and Cut: Clear, kiln-dried, select White Maple, plain sawn or sliced, finished lumber (S4S).
  - 4. Veneer Plywood: Provide veneer plywood with species and cut as indicated above. Thickness as indicated on Drawings, or if not indicated, provide a minimum of 3/4-inch plywood.

### **2.4 SOLID-SURFACING-MATERIAL FOR WINDOW SILLS AND WALL CAPS**

- A. Solid-Surfacing Material: Homogeneous solid sheets of filled plastic resin or acrylic base complying with material and performance requirements in ANSI Z124.3, for Type 5 or Type 6, without a precoated finish.
  - 1. Quality Standard: Comply with AWS Section 11 requirements for countertops.
  - 2. Grade: Custom
  - 3. Solid-Surfacing-Material Thickness: 1/2 inch.

- B. Available Products: Subject to compliance with requirements of Contract Documents, products that may be incorporated into the Work include, but are not limited to, the following:
1. Corian; DuPont Polymers.
  2. Solid Surfacing; Formica Corporation.
  3. Staron; Samsung.
  4. **“Basis of Design” Wilsonart, Gibraltar, color: Powder White**
- C. Colors, Patterns, and Finishes: Provide materials and products that result in colors of solid-surfacing material complying with the following requirements:
1. Provide Architect’s selections from manufacturer’s full range of colors and finishes.
- D. Fabricate window sills and wall caps in one piece with shop-applied edges, unless otherwise indicated. Comply with solid-surfacing-material manufacturer’s written recommendations for adhesives, sealers, fabrication, and finishing.
1. Window sills are to have a dropped edge to cover raw edge of gypsum board

## **2.5 MISCELLANEOUS MATERIALS**

- A. Fasteners for Interior Finish Carpentry: Nails, screws, and other anchoring devices of type, size, material, and finish required for application indicated to provide secure attachment, concealed where possible.
1. Where finish carpentry materials are exposed in areas of high humidity, provide fasteners and anchorages with hot-dip galvanized coating complying with ASTM A 153.
- B. Glue: Aliphatic- or phenolic-resin wood glue recommended by manufacturer for general carpentry use.

## **2.6 FABRICATION**

- A. Wood Moisture Content: Comply with requirements of specified inspection agencies and manufacturer’s recommendations for moisture content of finish carpentry on relative humidity conditions existing during time of fabrication and in installation areas.
- B. Fabricate finish carpentry to dimensions, profiles, and details indicated.
1. Back out or kerf backs of the following members, except members with ends exposed in finished work:
    - a. Interior standing and running trim.
  2. Ease edges of lumber less than 1 inch in nominal thickness to 1/16-inch radius.
  3. Ease edges of lumber 1 inch or more in nominal thickness to 1/8-inch radius

## **PART 3 - EXECUTION**

### **3.1 EXAMINATION**

- A. Examine substrates, with Installer present, for compliance with requirements for installation tolerances and other conditions affecting installation and performance of finish carpentry. Do not proceed with installation until unsatisfactory conditions have been corrected.

### **3.2 PREPARATION**

- A. Clean substrates of projections and substances detrimental to application.

- B. Condition finish carpentry to average prevailing humidity conditions in installation areas before installation, for a minimum of 24 hours unless longer conditioning is recommended by manufacturer.
- C. Prime and backprime lumber for painted finish. Comply with requirements for surface preparation and application in Section 09 9000 "Painting."

### **3.3 INSTALLATION, GENERAL**

- A. Do not use finish carpentry materials that are unsound, warped, improperly treated or finished, inadequately seasoned, or too small to fabricate with proper jointing arrangements.
  - 1. Do not use manufactured units with defective surfaces, sizes, or patterns.
- B. Install finish carpentry plumb, level, true, and aligned with adjacent materials. Use concealed shims where required for alignment.
  - 1. Scribe and cut finish carpentry to fit adjoining work. Refinish and seal cuts as recommended by manufacturer.
  - 2. Countersink nails, fill surface flush, and sand where face nailing is unavoidable.
  - 3. Install to tolerance of 1/8 inch in 96 inches for plumb and level. Install adjoining finish carpentry with 1/32-inch maximum offset for flush installation and 1/16-inch maximum offset for reveal installation.
  - 4. Coordinate finish carpentry with materials and systems in or adjacent to standing and running trim and rails. Provide cutouts for mechanical and electrical items that penetrate exposed surfaces of trim and rails.
- C. Window Sills: Anchor securely by screwing through corner blocks or other supports into underside of window sills.
  - 1. Align adjacent solid-surfacing-material window sills and form seams to comply with manufacturer's written recommendations using adhesive in color to match countertop. Carefully dress joints smooth, remove surface scratches, and clean entire surface.
  - 2. Where windows are interior, provide solid-surfacing on both sides of the window unless a ceramic tile or wood window sill is indicated on Drawings.

### **3.4 STANDING AND RUNNING TRIM INSTALLATION**

- A. Install with minimum number of joints practical, using full-length pieces from maximum lengths of lumber available. Do not use pieces less than 24 inches (610 mm) long, except where necessary. Stagger joints in adjacent and related standing and running trim. Cope at returns and miter at corners to produce tight-fitting joints with full-surface contact throughout length of joint. Use scarf joints for end-to-end joints. Plane backs of casings to provide uniform thickness across joints, if required.
  - 1. Match color and grain pattern across joints.
  - 2. Install trim after gypsum board joint finishing operations are completed.
  - 3. Drill pilot holes in hardwood before fastening to prevent splitting. Fasten to prevent movement or warping. Countersink fastener heads on exposed carpentry work and fill holes.

### **3.5 ADJUSTING**

- A. Repair damaged or defective finish carpentry where possible to eliminate functional or visual defects. Where not possible to repair, replace finish carpentry. Adjust joinery for uniform appearance.



**3.6 CLEANING**

- A. Clean finish carpentry on exposed and semi-exposed surfaces. Touch up factory-applied finishes to restore damaged or soiled areas.

**3.7 PROTECTION**

- A. Provide final protection and maintain conditions that ensure finish carpentry is without damage or deterioration at the time of Substantial Completion.

**END OF SECTION**

## SECTION 09 3013

### CERAMIC TILING

#### PART 1 - GENERAL

##### 1.1 RELATED DOCUMENTS

- A. Drawings and general provisions of the Contract, including General and Supplementary Conditions and Division 1 Specification Sections, apply to this Section.

##### 1.2 SUMMARY

- A. This Section includes the following:
  - 1. Glazed wall tile.
  - 2. Waterproofing for tile installations
  - 3. Thresholds installed as part of tile installations.
  - 4. Trim pieces.
- B. Related Sections include the following:
  - 1. Section 03 3100 "Cast-in-Place Concrete" for monolithic slab finishes specified for tile substrates.
  - 2. Section 09 2913 "Gypsum Board" for tile backing panels installed in gypsum wallboard assemblies.
  - 3. "Key-Finish" on Drawings for product selections and colors.

##### 1.3 DEFINITIONS

- A. Module Size: Actual tile size (minor facial dimension as measured per ASTM C 499) plus joint width indicated.
- B. Facial Dimension: Nominal tile size as defined in ANSI A137.1.

##### 1.4 PERFORMANCE REQUIREMENTS

- A. Static Coefficient of Friction: For tile installed on walkway surfaces, provide products with the following values as determined by testing identical products per ASTM C 1028:
  - 1. Level Surfaces: Minimum 0.6.
- B. Load-Bearing Performance: For ceramic tile installed on walkway surfaces, provide installations rated for the following load-bearing performance level based on testing assemblies according to ASTM C 627 that are representative of those indicated for this Project:
  - 1. Heavy: Passes cycles 1 through 12.

##### 1.5 SUBMITTALS

- A. Product Data: For each type of tile, mortar, grout, and other products specified.
- B. Tile Samples for Selection: Manufacturer's color charts consisting of actual tiles or sections of tiles showing the full range of colors, textures, and patterns available for each type and composition of tile indicated. Include Samples of accessories involving color selection.

- C. Grout Samples for Selection: Manufacturer's color charts consisting of actual sections of grout showing the full range of colors available for each type of grout indicated.

## **1.6 QUALITY ASSURANCE**

- A. Installer Qualifications: Engage an experienced installer who has completed tile installations similar in material, design, and extent to that indicated for this Project and with a record of successful in-service performance.
- B. Source Limitations for Tile: Obtain each color, grade, finish, type, composition, and variety of tile from one source with resources to provide products from the same production run for each contiguous area of consistent quality in appearance and physical properties without delaying the Work.
- C. Source Limitations for Setting and Grouting Materials: Obtain ingredients of a uniform quality for each mortar, adhesive, and grout component from a single manufacturer and each aggregate from one source or producer.
- D. Source Limitations for Other Products: Obtain each of the following products specified in this Section from one source and by a single manufacturer for each product:
  - 1. Solid Surface Material thresholds.
  - 2. Waterproofing.
- E. Mockups: Build mockups to verify selections made under Sample submittals and to demonstrate aesthetic effects and set quality standards for materials and execution.
  - 1. Build mockup of each type of floor tile installation, including joints and floor/wall transition.
  - 2. Build mockup of each type of wall tile installation, including edge treatments..
  - 3. Build mockup of corridor bench to demonstrate tile placement and edge conditions.
  - 4. Mockups may be part of Control Areas, as indicated in section 01 4349.
  - 5. Subject to compliance with requirements, approved mockups may become part of the completed Work if undisturbed at time of Substantial Completion.

## **1.7 DELIVERY, STORAGE, AND HANDLING**

- A. Deliver and store packaged materials in original containers with seals unbroken and labels intact until time of use. Comply with requirement of ANSI A137.1 for labeling sealed tile packages.
- B. Prevent damage or contamination to materials by water, freezing, foreign matter, and other causes.
- C. Handle tile with temporary protective coating on exposed surfaces to prevent coated surfaces from contacting backs or edges of other units. If coating does contact bonding surfaces of tile, remove coating from bonding surfaces before setting tile.

## **1.8 PROJECT CONDITIONS**

- A. Environmental Limitations: Do not install tile until construction in spaces is completed and ambient temperature and humidity conditions are being maintained to comply with referenced standards and manufacturer's written instructions.



## 1.9 EXTRA MATERIALS

- A. Deliver extra materials to Owner. Furnish extra materials described below that match products installed, are packaged with protective covering for storage, and are identified with labels describing contents.
1. Tile and Trim Units: Furnish quantity of full-size units equal to 3 percent of amount installed, for each type, composition, color, pattern, and size indicated.

## PART 2 - PRODUCTS

### 2.1 MANUFACTURERS

- A. Available Manufacturers: Subject to compliance with requirements of Contract Documents, manufacturers offering products that may be incorporated into the Work include the following:
1. Tile Products:
    - a. Crossville/Contempo.
    - b. **"Basis of Design"** Daltile Corporation, **Core Fundamentals, Choice, Square Matte color: Sq 21 Burrow Beige, size: 12 x 12 inch; www.daltile.com**
    - c. Crossville Studios
    - d. Mosa.
  2. Tile-Setting and -Grouting Materials:
    - a. Laticrete International, Inc.
    - b. Mapei Corporation.
    - c. Custom Building Products.

### 2.2 PRODUCTS, GENERAL

- A. ANSI Ceramic Tile Standard: Provide tile that complies with ANSI A137.1, "Specifications for Ceramic Tile," for types, compositions, and other characteristics indicated.
1. Provide tile complying with Standard Grade requirements, unless otherwise indicated.
  2. For facial dimensions of tile, comply with requirements relating to tile sizes specified in Part 1 "Definitions" Article.
- B. ANSI Standards for Tile Installation Materials: Provide materials complying with ANSI standards referenced in "Setting Materials" and "Grouting Materials" articles.
- C. Colors, Textures, and Patterns: Where manufacturer's standard products are indicated for tile, grout, and other products requiring selection of colors, surface textures, patterns, and other appearance characteristics, provide specific products or materials complying with the following requirements:
1. ~~Provide Architect's selections from manufacturer's full range of colors, textures, and patterns for products of type indicated.~~ Also see the Finish Schedule.
  2. Provide tile trim and accessories that match color and finish of adjoining flat tile.
- D. Factory Blending: For tile exhibiting color variations within the ranges selected during Sample submittals, blend tile in the factory and package so tile units taken from one package show the same range in colors as those taken from other packages and match approved Samples.

- E. Mounting: Where factory-mounted tile is required, provide back- or edge-mounted tile assemblies as standard with manufacturer, unless another mounting method is indicated.
  - 1. Where tile is indicated for installation in wet areas, do not use back- or edge-mounted tile assemblies unless tile manufacturer specifies in writing that this type of mounting is suitable for these kinds of installations and has a record of successful in-service performance.
- F. Factory-Applied Temporary Protective Coating: Where indicated under tile type, protect exposed surfaces of tile against adherence of mortar and grout by pre-coating them with a continuous film of petroleum paraffin wax, applied hot. Do not coat unexposed tile surfaces.

## 2.3 TILE PRODUCTS

- A. Tile: As indicated on Key-Finish on Drawings.
- B. Waterjet Cut Tile: As shown on Drawings, for example, at main toilet rooms creating life sized male and female symbols, and at foods lab creating numbers at work stations; numbers will be in contrasting colors to the field tile.
  - 1. Colors: As selected by Architect from manufacturer's full range.
  - 2. Font: As selected by Architect.
- C. Trim Units: Provide tile trim units to match characteristics of adjoining flat tile and to comply with the following requirements:
  - 1. Size: As indicated, coordinated with sizes and coursing of adjoining flat tile where applicable.
  - 2. Shapes: As indicated in Key-Finish and as detailed on Drawings.
- D. Metal Trim Units: Provide metal trim units as indicated on Finish Legend and as shown in details on Drawings.
  - 1. Acceptable Manufacturer: Subject to compliance with requirements of Contract Documents, provided products by manufacturer listed below. If not listed, submit as substitution according to Conditions of the Contract and the provisions of Division 1 Sections.
    - a. Schluter Systems; [www.schluter.com](http://www.schluter.com).
  - 2. Shapes: DILEX-AHK AND DILEX-AHKA, as indicated on Key-Finish and on Drawings.
  - 3. Finish: Satin anodized aluminum.

## 2.4 THRESHOLDS

- A. General: Provide thresholds that are uniform in color and finish, fabricated to sizes and profiles indicated to provide transition between tile surfaces and adjoining finished floor surfaces.
  - 1. Fabricate thresholds to heights indicated, but not more than 1/2 inch above adjoining finished floor surfaces, with transition edges beveled on a slope of no greater than 1:2.

- B. Molded Thresholds:
1. Solid Surfacing Material: Homogeneous solid sheets of filled plastic resin complying with the material and performance requirements of ANSI Z124.3, Type 5 or Type 6, without a precoated finish.
    - a. Thickness: 1/2 inch minimum.
    - b. Provide tapered front edge.
    - c. Thresholds shall be continuous between door jambs.
    - d. Provide colors as selected by Architect from manufacturer's full selection of colors.
    - e. Available Products: Subject to compliance with requirements of Contract Documents, products that may be incorporated in the Work include, but are not limited to, the following:
      - 1) Corian; DuPont Polymers.
      - 2) Solid Surfacing; Formica Corporation.
      - 3) Staron; Lotte Chemicals.

## 2.5 FLUID APPLIED WATERPROOFING AND CRACK ISOLATION MEMBRANE (INTERIOR)

- A. Acceptable Manufacturers: Subject to compliance with requirements of Contract Documents, provide the following product. Manufacturers offering alternative products shall submit as substitutions according to the Conditions of the Contract and provisions of Division 1 sections at least 10 days prior to the scheduled receipt of bids.
1. Manufacturer: Mapei.
  2. Product: Mapelastic® AquaDefense with Mapei reinforcing fabric.
- B. Properties: Exceeding ANSI A118.10 and A118.12, ASTM C627 (Robinson) service rating for "extra heavy", listed by IAPMO for use as shower-pan liner.
- C. Locations: Use at wet areas and any area which might have water on the floor, such as showers, locker rooms, restrooms, and food preparation areas, also, where shown on Drawings, and where directed by Architect.
- D. Extend waterproofing membrane up walls at least 8 inches.

## 2.6 SETTING MATERIALS

- A. Primer (where required by installer to assure a warrantable installation):
1. Basis of Design: Contract Documents are based on product specified below to establish a standard of quality. Other manufacturers with products having equivalent characteristics may be considered, provided deviations are minor and design concept as expressed in the Contract Documents is not changed, as judged by the Architect.
    - a. Manufacturer: Mapei; [www.mapei.com](http://www.mapei.com)
    - b. Product: "Eco Prim Grip".
  2. Properties: Solvent-free primer composed of synthetic resin in water dispersion and selected inert materials; gray latex.
- B. Polymer-Modified Thinset Mortar: Meet or exceed ANSI A118.4, A118.11, A118.15E and ISO C2ES1P1.
1. Basis of Design: Contract Documents are based on product specified below to establish a standard of quality. Other manufacturers with products having equivalent characteristics may be considered, provided deviations are minor and design concept as expressed in the Contract Documents is not changed, as judged by the Architect.
    - a. Manufacturer: Mapei; [www.mapei.com](http://www.mapei.com)
    - b. Product: "UltraFlex 3".



2. Protection:
  - a. Install only at temperatures between 40 degrees F and 95 degrees F.
  - b. Protect from traffic for 24 hours. Protect from heavy traffic for 7 days.
  - c. Protect from frost and rain for 21 days.
  - d. Protect from water immersion for 21 days.
  
- C. Polymer-Enriched Large and Heavy Tile Mortar: A118.4HTE, A118.11 and A118.15HTE.
  1. Basis of Design: Contract Documents are based on product specified below to establish a standard of quality. Other manufacturers with products having equivalent characteristics may be considered, provided deviations are minor and design concept as expressed in the Contract Documents is not changed, as judged by the Architect.
    - a. Manufacturer: Mapei; www.mapei.com
    - b. Product: "Large Tile and Stone Mortar".
  2. Protection:
    - a. Do not disturb the installation, allow light traffic or grout the tiles for at least 24 to 48 hours.
    - b. Protect the installation from general traffic for at least 72 hours and from heavy traffic for at least 7 days.
    - c. Protect the installation from rain for 72 hours and from freezing for 21 days.
  
- D. Thick-Set Mortar: ANSI A108.1A.
  1. Basis of Design: Contract Documents are based on product specified below to establish a standard of quality. Other manufacturers with products having equivalent characteristics may be considered, provided deviations are minor and design concept as expressed in the Contract Documents is not changed, as judged by the Architect.
    - a. Manufacturer: Mapei; www.mapei.com
    - b. Product: "Modified Mortar Bed".
  2. Properties: Pre-blended cement-based, polymer-modified thick bed mortar.
  3. Protection:
    - a. Provide for dry, heated storage on site and deliver materials at least 24 hours before work begins.
    - b. Protect the installation from rain, snow, freezing and direct solar heat, which may affect curing and performance properties.
    - c. Maintain a temperature between 45 degrees F and 95 degrees F for at least 72 hours after the installation.
    - d. Because temperature and humidity (during and after installation of tile) affect the final curing time, allow for extended periods of protection when jobsite temperatures drop below 60 degrees F and/or when relative humidity is higher than 70 percent.
    - e. If Modified Mortar Bed is being used to install tile, allow it to cure for 24 hours per 1/2 inch of thickness. Curing time depends upon thickness applied and jobsite conditions.
    - f. When installing per ANSI A108.1B, cover the mortar bed for an initial 24 hours.

## 2.8 GROUTING MATERIALS

- A. Fine-Aggregate, Polymer-Modified Grout: Meets or exceeds ANSI A118.6 and A118.7; ISO 13007 Classification CG2WAF
  1. Basis of Design: Mapei Ultracolor Plus FA.
  2. Protection:
    - a. Use only at temperatures between 50 degrees F and 95 degrees F.
    - b. Provide for dry, heated storage on site and deliver materials at least 24 hours before tilework begins.

- c. For at least 72 hours after completion, protect from rain and freezing, and do not immerse the installation in water.
  - d. Floors: Keep the installation free from foot traffic for at least 3 hours after grouting.
  - e. Walls: Protect the installation from impact, vibration and hammering on adjacent and opposite walls for 14 days after tile installation (see the TDS of the adhesive or setting system for details).
  - f. Because temperature and humidity (during and after installation of tile) affect the final curing time of all cement-based materials, allow for extended periods of curing and protection when temperatures drop below 60 degrees F or when the relative humidity is higher than 70 percent.
3. Colors: As indicated on Key-Finish or, if not indicated, as selected by Architect from manufacturer's full range of colors.

## 2.9 ELASTOMERIC SEALANTS

- A. General: Provide manufacturer's standard chemically curing, elastomeric sealants of base polymer and characteristics indicated that comply with applicable requirements of Division 7 Section "Joint Sealants."
- B. Colors: Provide colors of exposed sealants to match colors of grout in tile adjoining sealed joints, unless otherwise indicated.
- C. One-Part, Mildew-Resistant Silicone Sealant: ASTM C 920; Type S; Grade NS; Class 25; Uses NT, G, A, and, as applicable to nonporous joint substrates indicated, O; formulated with fungicide, intended for sealing interior ceramic tile joints and other nonporous substrates that are subject to in-service exposures of high humidity and temperature extremes.
- D. Multipart, Pourable Urethane Sealant for Use T: ASTM C 920; Type M; Grade P; Class 25; Uses T, M, A, and, as applicable to joint substrates indicated, O.
- E. Available Products: Subject to compliance with requirements of Contract Documents, products which may be incorporated into the Work include, but are not limited to, the following:
  - 1. One-Part, Mildew-Resistant Silicone Sealants:
    - a. Dow Corning 786; Dow Corning Corporation.
    - b. Sanitary 1700; GE Silicones.
    - c. Pecora 898 Sanitary Silicone Sealant; Pecora Corp.
    - d. Tremsil 600 White; Tremco, Inc.
  - 2. Multipart, Pourable Urethane Sealants:
    - a. Chem-Calk 550; Bostik.
    - b. Vulkem 245; Mameco International, Inc.
    - c. NR-200 Urexpan; Pecora Corp.
    - d. THC-900; Tremco, Inc.

## 2.10 MISCELLANEOUS MATERIALS

- A. Trowelable Underlayments and Patching Compounds: Latex-modified, portland-cement-based formulation provided or approved by manufacturer of tile-setting materials for installations indicated.
- B. Temporary Protective Coating: Provide product indicated below that is formulated to protect exposed surfaces of tile against adherence of mortar and grout; is compatible with tile, mortar, and grout products; and is easily removable after grouting is completed without damaging grout or tile.

- D. Tile Cleaner: A neutral cleaner capable of removing soil and residue without harming tile and grout surfaces, specifically approved for materials and installations indicated by tile and grout manufacturers.
- E. Grout Sealer: Water-based, no-sheen, natural-look penetrating sealer for all grout joints.

## **2.11 MIXING MORTARS AND GROUT**

- A. Mix mortars and grouts to comply with referenced standards and mortar and grout manufacturers' written instructions.
- B. Add materials and additives in accurate proportions. Do not use or add any water to mortar or grout when mixing, use only latex additive.
- C. Obtain and use type of mixing equipment, mixer speeds, mixing containers, mixing time, and other procedures to produce mortars and grouts of uniform quality with optimum performance characteristics for installations indicated.

## **PART 3 - EXECUTION**

### **3.1 EXAMINATION**

- A. Examine substrates, areas, and conditions where tile will be installed, with Installer present, for compliance with requirements for installation tolerances and other conditions affecting performance of installed tile.
  - 1. Verify that substrates for setting tile are firm; dry; clean; free from oil, waxy films, and curing compounds; and within flatness tolerances required by referenced ANSI A108 series of tile installation standards for installations indicated.
  - 2. Verify that installation of grounds, anchors, recessed frames, electrical and mechanical units of work, and similar items located in or behind tile has been completed before installing tile.
  - 3. Verify that joints and cracks in tile substrates are coordinated with tile joint locations; if not coordinated, adjust latter in consultation with Architect.
- B. Do not proceed with installation until unsatisfactory conditions have been corrected.

### **3.2 PREPARATION**

- A. Remove coatings, including curing compounds, and other substances that contain soap, wax, oil, or silicone and are incompatible with tile-setting materials by using a terrazzo or concrete grinder, a drum sander, or a polishing machine equipped with a heavy-duty wire brush.
- B. Provide concrete substrates for tile floors installed with dry-set or latex-Portland cement mortars that comply with flatness tolerances specified in referenced ANSI A108 series of tile installation standards for installations indicated.
  - 1. Use trowelable leveling and patching compounds per tile-setting material manufacturer's written instructions to fill cracks, holes, and depressions.
  - 2. Remove protrusions, bumps, and ridges by sanding or grinding.
- C. Blending: For tile exhibiting color variations within the ranges selected during Sample submittals, verify that tile has been blended in the factory and packaged so tile units taken from one package show the same range in colors as those taken from other packages and match approved Samples. If not factory blended, either return to manufacturer or blend tiles at Project site before installing.

- D. Field-Applied Temporary Protective Coating: Where indicated under tile type or needed to prevent adhesion or staining of exposed tile surfaces by grout, protect exposed surfaces of tile against adherence of mortar and grout by pre-coating them with a continuous film of temporary protective coating.

### **3.3 INSTALLATION, GENERAL**

- A. ANSI Tile Installation Standards: Comply with parts of ANSI A108 series of tile installation standards in "Specifications for Installation of Ceramic Tile" that apply to types of setting and grouting materials and to methods indicated in ceramic tile installation schedules.
- B. TCNA Installation Guidelines: TCNA's "Handbook for Ceramic Tile Installation." Comply with TCNA installation methods indicated in ceramic tile installation schedules.
- C. Extend tile work into recesses and under or behind equipment and fixtures to form a complete covering without interruptions, unless otherwise indicated. Terminate work neatly at obstructions, edges, and corners without disrupting pattern or joint alignments.
- D. Accurately form intersections and returns. Perform cutting and drilling of tile without marring visible surfaces. Carefully grind cut edges of tile abutting trim, finish, or built-in items for straight aligned joints. Fit tile closely to electrical outlets, piping, fixtures, and other penetrations so plates, collars, or covers overlap tile.
- E. Jointing Pattern: Lay tile in grid pattern, unless otherwise indicated. Align joints when adjoining tiles on floor, base, walls, and trim are the same size. Lay out tile work and center tile fields in both directions in each space or on each wall area. Adjust to minimize tile cutting. Provide uniform joint widths, unless otherwise indicated.
  - 1. For tile mounted in sheets, make joints between tile sheets the same width as joints within tile sheets so joints between sheets are not apparent in finished work.
- F. Lay out tile wainscots to next full tile beyond dimensions indicated.
- G. Expansion Joints: Locate expansion joints and other sealant-filled joints, including control, contraction, and isolation joints, where indicated or if not indicated as recommended by TCNA guidelines, during installation of setting materials, mortar beds, and tile. Do not saw-cut joints after installing tiles.
  - 1. Locate joints in tile surfaces directly above joints in concrete substrates.
  - 2. Prepare joints and apply sealants to comply with requirements of Division 7 Section "Joint Sealants."
- H. Grout tile to comply with the requirements of the following tile installation standards:
  - 1. For ceramic tile grouts (sand-Portland cement, dry-set, commercial Portland cement, and latex-Portland cement grouts), comply with ANSI A108.10.

### **3.4 FLOOR TILE INSTALLATION**

- A. General: Install tile to comply with requirements in the Ceramic Tile Floor Installation Schedule, including those referencing TCNA installation methods and ANSI A108 series of tile installation standards.
  - 1. Movement Joints: Provide movement joints as recommended by TCNA EJ171-07 "Movement Joint Design Essentials". Space joints as recommended by TCNA method, coordinate with the Architect for precise location of joints.
  - 2. Installation Methods:
    - a. Tile over Concrete Surfaces: TCNA F121.

- 1) Waterproof/cleavage membrane meeting ANSI A118.10.
  - 2) Mortar meeting ANSI A108.1A.
- b. Methods outlined do not limit installer from using alternative methods, *if* alternatives are recommended by tile or installation products manufacturers and authorized by the Architect.
- B. Joint Widths: Install tile on floors with the following joint widths:
1. Ceramic Mosaic Tile: 1/16 inch.
  2. Ceramic Tile: 1/16 inch.
- C. Back Buttering: For installations indicated, obtain 100 percent mortar coverage by complying with applicable special requirements for back buttering of tile in referenced ANSI A108 series of tile installation standards:
1. Tile floors composed of tiles 8 by 8 inches or larger.
  2. Tile floors installed with chemical-resistant grouts.
- D. Thresholds: Install thresholds at locations indicated; set in same type of setting bed as abutting field tile, unless otherwise indicated.
1. Set thresholds in latex-Portland cement mortar for locations where mortar bed would otherwise be exposed above adjacent non-tile floor finish. Verify compatibility of mortar with stone prior to installation.
- E. Apply two (2) coats of grout sealer in accordance with manufacturer's printed instructions and recommendations. Remove sealer remaining on the tile within 3 to 5 minutes of application.
- F. Extend waterproofing membrane up walls at least 8 inches.

### 3.5 WALL TILE INSTALLATION

- A. Install types of tile designated for wall installations to comply with requirements in the Ceramic Tile Wall Installation Schedule, including those referencing TCNA installation methods and ANSI setting-bed standards.
1. Installation Methods:
    - a. Tile over Masonry Surfaces: TCNA W211.
    - b. Tile over glass mat tile backer panels - Interior Surfaces: TCNA W244C.
    - c. Tile for Showers: TCNA B431.
  2. Methods outlined do not limit installer from selecting alternative methods, *if* alternatives are recommended by tile or installation products manufacturers and authorized by the Architect.
- B. Joint Widths: Install tile on walls with the following joint widths:
1. Ceramic Tile: 1/16 inch.
  2. Wall Tile: 1/16 inch.
- C. Back Buttering: For installations indicated, obtain 100 percent mortar coverage by complying with applicable special requirements for back buttering of tile in referenced ANSI A108 series of tile installation standards:
1. Tile wall installations in wet areas, including showers.
  2. Tile wall installations composed of tiles 8 by 8 inches or larger.
- D. Apply two (2) coats of grout sealer in accordance with manufacturer's printed instructions and recommendations. Remove sealer remaining on the tile within 3 to 5 minutes of application.



### **3.6 CLEANING AND PROTECTING**

- A. Cleaning: On completion of placement and grouting, clean all ceramic tile surfaces so they are free of foreign matter.
  - 1. Remove latex-Portland cement grout residue from tile as soon as possible.
  - 2. Unglazed tile may be cleaned with acid solutions only when permitted by tile and grout manufacturer's written instructions, but no sooner than 10 days after installation. Protect metal surfaces, cast iron, and vitreous plumbing fixtures from effects of acid cleaning. Flush surface with clean water before and after cleaning.
  - 3. Remove temporary protective coating by method recommended by coating manufacturer that is acceptable to brick and grout manufacturer. Trap and remove coating to prevent it from clogging drains.
- B. Finished Tile Work: Leave finished installation clean and free of cracked, chipped, broken, unbonded, and otherwise defective tile work.
- C. Provide final protection and maintain conditions, in a manner acceptable to manufacturer and Installer, which ensure tile is without damage or deterioration at the time of Substantial Completion.
- D. When recommended by tile manufacturer, apply a protective coat of neutral protective cleaner to completed tile walls and floors. Protect installed tile work with kraft paper or other heavy covering during construction period to prevent staining, damage, and wear.
- E. Prohibit foot and wheel traffic from tiled floors for at least 7 days after grouting is completed.
- F. Before final inspection, remove protective coverings and rinse neutral cleaner from tile surfaces.

**END OF SECTION**

**SECTION 12 2113**  
**HORIZONTAL LOUVER BLINDS**

**PART 1 GENERAL**

**1.1 RELATED DOCUMENTS**

- A. Drawings and general provisions of the Contract, including General and Supplementary Conditions and Division 1 Specification Sections, apply to this Section.

**1.2 SECTION INCLUDES**

- A. Horizontal slat louver blinds.
- B. Operating hardware.

**1.3 RELATED REQUIREMENTS**

- A. Section 06 1000 - Rough Carpentry: Concealed wood blocking for attachment of headrail brackets.

**1.4 REFERENCE STANDARDS**

- A. WCMA A100.1 - Standard for Safety of Window Covering Products; 2022.

**1.5 ADMINISTRATIVE REQUIREMENTS**

- A. Coordinate the placement of concealed blocking to support blinds. See Section 06 1000.

**1.6 SUBMITTALS**

- A. Product Data: Provide data indicating physical and dimensional characteristics.
- B. Shop Drawings: Indicate opening sizes, tolerances required, method of attachment, clearances, and operation.
- C. Samples: Submit two samples, 6 inch long illustrating slat materials and finish, cord type and color.
- D. Manufacturer's Installation Instructions: Indicate special procedures.
- E. Maintenance Materials: Furnish the following for Owner's use in maintenance of project.
  - 1. See Section 01 6000 - Product Requirements, for additional provisions.
  - 2. Extra Slats: 20 of each type and size.
  - 3. Extra Lift Cords, Control Cords, and Wands: One of each type.

## 1.7 QUALITY ASSURANCE

- A. Manufacturer Qualifications: Company specializing in manufacturing the products specified in this section with minimum three years documented experience.

## PART 2 PRODUCTS

### 2.1 MANUFACTURERS

- A. Horizontal Louver Blinds Without Side Guides:
  - 1. "Basis of Design" Hunter Douglas Architectural; CE61: 1 inch slats  
[www.hunterdouglasarchitectural.com/#sle](http://www.hunterdouglasarchitectural.com/#sle).
  - 2. Levolor; Metal Blinds: [www.commercial.levolor.com/#sle](http://www.commercial.levolor.com/#sle).
  - 3. SWFcontract, a division of Springs Window Fashions, LLC  
: [www.swfcontract.com/#sle](http://www.swfcontract.com/#sle).
  - 4. Substitutions: See Section 01 6000 - Product Requirements.

### 2.2 BLINDS

- A. Description: Horizontal slat louvers hung from full-width headrail with full-width bottom rail.
- B. Manual Operation: Control of raising and lowering by cord with full range locking; blade angle adjustable by control wand.
- C. Metal Slats: Spring tempered pre-finished aluminum; square slat corners, with manufacturing burrs removed.
  - 1. Width: 1 inch.
  - 2. Thickness: 0.006 inch.
  - 3. Color: As selected by Architect.
- D. Slat Support: Woven polypropylene cord, ladder configuration.
- E. Head Rail: Pre-finished, formed aluminum box, with end caps; internally fitted with hardware, pulleys, and bearings for operation; same depth as width of slats.
- F. Lift Cord: Braided nylon, continuous loop with restraining device; comply with WCMA A100.1.
  - 1. Free end looped through wall mounted spring tensioned pulley.
  - 2. Color: As selected by Architect.
- G. Control Wand: Extruded hollow plastic; hexagonal shape.
  - 1. Non-removable type.
  - 2. Color: Clear.
- H. Headrail Attachment: Wall brackets.
- I. Accessory Hardware: Type recommended by blind manufacturer.

**2.3 FABRICATION**

- A. Determine sizes by field measurement.
- B. Fabricate blinds to cover window frames completely.

**PART 3 EXECUTION**

**3.1 EXAMINATION**

- A. Verify that openings are ready to receive the work.
- B. Ensure structural blocking and supports are correctly placed. See Section 06 1000.

**3.2 INSTALLATION**

- A. Install blinds in accordance with manufacturer's instructions.
- B. Secure in place with flush countersunk fasteners.

**3.3 TOLERANCES**

- A. Maximum Variation of Gap at Window Opening Perimeter: 1/4 inch.
- B. Maximum Offset From Level: 1/8 inch.

**3.4 ADJUSTING**

- A. Adjust blinds for smooth operation.

**3.5 CLEANING**

- A. Clean blind surfaces just prior to occupancy.
- B. See Section 01 7419 - Construction Waste Management and Disposal, for additional requirements.

**END OF SECTION**

