

ADDENDUM NO. 5

October 11, 2024

TO THE PLANS AND PROJECT MANUAL FOR

CORNER CANYON HS FIELD HOUSE

12943 South 700 East
DRAPER UT, 84020

Prepared by:



233 South Pleasant Grove Blvd., Suite 105
Pleasant Grove, Utah 84062
(801) 769-3000 Office

This addendum issued October 11, 2024, is hereby made a part of the contract documents. It shall be the responsibility of each Contractor to notify his subcontractors of the contents of this addendum. In case of conflict between drawings, specifications and the Addendum, this Addendum shall govern. All changes, corrections, deletions and/or additions to the initial bidding documents shall be included in the bid.



11 OCT '24

ADDENDUM NO. 5

October 11, 2024

CORNER CANYON HS FIELD HOUSE

12943 South 700 East

DRAPER UT, 84020

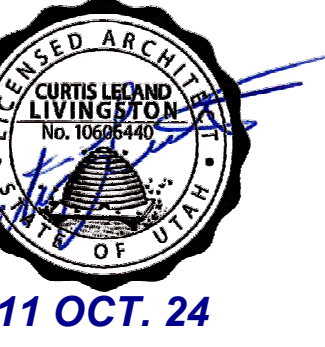
Architectural Items:

1. Sheet A890 - See the attached revised sheet for items noted by revision cloud Mark 5

Mechanical & Plumbing Items:

1. Mechanical Addendum- See attached - CCHS Fieldhouse - Mechanical Addendum 05.

END OF ADDENDUM NO. 5 - CORNER CANYON HS FIELD HOUSE



KEYNOTES

FINISH ROOM SCHEDULE ALTERNATE

Name	Number	Floor Finish	Base Finish	Wall Finish	Millwork Finishes	Ceiling Finish	Door Finish
STAIR #1	1	F13	B2	W1	-	CL2	-
TURF FIELD	100	F4, F5, F6, F7	B1	W7, W10, W11	-	CL3	D1
VESTIBULE	101	F2	B1	W1, W6	-	CL2	D1
R.R.	102	F1	B2	W3	-	CL1	D1
R.R.	103	F1	B2	W3	-	CL1	D1
TRAINING ROOM	104	F1	B1	W1, W3	M1, M2	CL2	D1
WOMEN'S	106	F1	B2	W3	-	CL1	D1
CLUST.	107	F3	B1	W1, W4	-	-	D1
MENS	108	F1	B2	W3	-	CL1	D1
LOCKER ROOM	109A	F1	B1	W1, W5	-	CL1	D1
R.R.	109B	F1	B2	W3	-	CL1	D1
RISER ROOM	110	F3	B1	W1	-	-	D1
WEIGHT ROOM	112	F8	B1	W1, W2, W4, W10, W11, W12	M1, M2	CL3	D1
CORRIDOR	113	F1	B1	W1	-	CL2	-
DATA	113	F3	B1	W1	-	-	D1
ELEC.	114	F3	B1	W1	-	-	D1
STOR.	115	F3	B1	W1	-	CL1	D1
MENS	115	F1	B1	W1	-	-	D1
BALCONY	200	F9	B1	W1	-	-	D2
BALCONY	200	F9, F10	B1	W1, W8, W14	-	CL1, CL2	D1, D2
V.I.P. SUITE	201	F9, F10	B1	W1, W2, W8, W14	-	CL1, CL2	D2
KITCHENETTE	203	F9, F10	B1	W1, W14	M2, M3, M4	CL1, CL2	D2
STOR.	203B	F3	B1	W1	-	CL1	D2
R.R.	204	F12	B2	-	-	-	D2
R.R.	205	F12	B2	-	-	-	D2
LEGACY ROOM	206	F11, F12	B1	W1, W10, W13	-	-	D2
CONFERENCE	207A	F11	B1	W1	-	CL2	D2
OFFICE	207B	F11	B1	W1	W2, W4	CL2	D2
OFFICE	207C	F11	B1	W1	M2, M4	CL2	D2
OFFICE	207D	F11	B1	W1	M2, M4	CL2	D2
STORAGE	207E	F3	B1	W1	-	CL1	D2
R.R.	207G	F12	B2	-	-	-	D2
STORAGE	208	F3	B1	W1	-	-	D2
OFFICE	208E	F11	B1	W1	M2, M4	CL2	D2
STAIR #2	298	F13	B2	W1	-	CL2	D1

INTERIOR FINISH SCHEDULE

CODE	MATERIAL	MANUFACTURER	PRODUCT NAME / NUMBER	COLOR / FINISH	SIZE	COMMENTS
1-FLOOR FINISHES						
F1	RUBBER TYPE 1	MONDO FLOORING	RAMFLEX	MARINE BLUE G986	36"	CHEMICALLY WELDED
F2	RUBBER TYPE 2	MONDO FLOORING	SPORT IMPACT	DARK GREY S018	36"	INTERLOCKING
F3	EPOXY PAINTED CONCRETE	SHERWIN WILLIAMS	-	KNITTING NEEDLES SW7672	-	-
F4	TURF TYPE 1	-	-	-	-	NIC - OWNER PROVIDED
F5	TURF TYPE 2	-	-	-	-	NIC - OWNER PROVIDED
F6	TURF TYPE 3	-	-	-	-	NIC - OWNER PROVIDED
F7	TURF TYPE 4	-	-	-	-	NIC - OWNER PROVIDED
F8	EXISTING RUBBER	-	-	-	-	-
F9	LUXURY VINYL TILE	JJ FLOORING	STEP BY STEP 9MM	-	18" X 36"	INSTALLATION: ASHLAR
F10	LUXURY VINYL TILE ACCENT	JJ FLOORING	STEP BY STEP 9MM	-	18" X 36"	INSTALLATION: ASHLAR
F11	CARPET TILE	PATCRAFT	ORGANIC INTERRUPTION, STYLE: LINEAR TENSION	CONCRETE 00570	18" X 36"	INSTALLATION: STAGGARD
F12	CARPET TILE	PATCRAFT	ORGANIC INTERRUPTION, STYLE: LINEAR TENSION	HARBOR 00460	18" X 36"	INSTALLATION: STAGGARD
F13	PORCELAIN FLOOR TILE	DALTILE	-	-	-	-
2-BASE FINISHES						
B1	6" RUBBER BASE	JOHNSONITE BY TARKETT	MANDALAY	BURNT UMBER 63	6"	-
B2	CORRESPONDING TILE BASE	-	-	-	-	-
3-WALL FINISH						
W1	GENERAL PAINT	SHERWIN WILLIAMS	-	PURE WHITE SW7005	-	SHIEN; EGGSHELL
W2	ACCENT PAINT	SHERWIN WILLIAMS	-	DRESS BLUES SW9167	-	SHIEN; EGGSHELL
W3	PORCELAIN WALL TILE	DALTILE	SYNCHRONIC	WHITE SY20 MATTE	12X24	GROUT: CBP "ASH" #642 INSTALLATION: VERTICAL STRAIGHT STACK
W4	CERAMIC WALL TILE	DALTILE	COLOR WHEEL LINEAR	WHITE SUEDE GRAY 0782	4X16	GROUT: CBP "PEWTER" #19 INSTALLATION: HORIZONTAL STRAIGHT STACK
W5	EPOXY PAINTED CONCRETE	SHERWIN WILLIAMS	-	KNITTING NEEDLES SW7672	-	GROUT: CBP "ASH" #642 INSTALLATION: HORIZONTAL STRAIGHT STACK
W6	PORCELAIN WALL TILE	DALTILE	-	SONIC WHITE VL75	12X24	COLOR TO BE SELECTED BY INTERIOR DESIGNER
W7	WALL PADDING	-	VOLUME 1.0	-	2 1/2" TYPICAL	FINISH: EGGSHELL
W8	ACCENT PAINT 2	SHERWIN WILLIAMS	-	KNITTING NEEDLES SW7672	-	FINISH: EGGSHELL
W9	ACCENT PAINT 3	SHERWIN WILLIAMS	-	DOMINO SW6889	-	FINISH: SEMI-GLOSS
W10	PAINTED METAL STRUCTURE	SHERWIN WILLIAMS	-	DRESS BLUES SW9167	-	FINISH: SEMI-GLOSS
W11	FIELD METAL PAINT	SHERWIN WILLIAMS	-	PURE WHITE SW7005	-	FINISH: SEMI-GLOSS
W12	DIAMOND PLATE	INPRO	-	STAINLESS STEEL DIAMOND PLATE	-	FINISH WITH CORNER GUARDS IN SAME DIAMOND PLATE PATTERN
W13	PLASTIC LAMINATE WALL PANELS	FORMICA	-	WALNUT RIFTWOOD 9283-NG	-	USE FRY REGLET 1/2" MILLWORK REVEAL IN BETWEEN MDF WRAPPED PANELS.
W14	TEXTILE WALLCOVERING	SBR TECHNOLOGIES	-	-	-	CUSTOM WALLCOVERING. BRANDING PROVIDED BY OWNER.
4-MILLWORK FINISHES						
M1	PLASTIC LAMINATE MILLWORK	FORMICA	-	STORM 912-58	-	-
M2	PLASTIC LAMINATE COUNTERTOP	WILSONART	-	GREY PAMPAS 4168-60	-	EASED EDGE
M3	SOLID SURFACE	FORMICA	EVERFORM	GAMMA GRAY 417	3CM	EASED EDGE USED AS WINDOW SILLS AS WELL
M4	PLASTIC LAMINATE MILLWORK	FORMICA	-	WALNUT RIFTWOOD 9283-NG	-	-
5-CEILING FINISH						
CL1	PAINTED GYPSUM BOARD	SHERWIN WILLIAMS	-	PURE WHITE SW7005	-	FINISH: FLAT
CL2	ACOUSTIC CEILING TILE	-	-	-	-	-
CL3	PAINTED STRUCTURE	SHERWIN WILLIAMS	-	DRESS BLUES SW9167	-	FINISH: SEMI-GLOSS
6-DOOR FINISHES						
D1	PAINTED METAL DOOR & TRIM	SHERWIN WILLIAMS	-	DOMINO SW6889	-	TRIM OF DOOR MATCH EXISTING, SHIEN - SEMI-GLOSS
D2	WOOD DOOR & PAINTED METAL TRIM	SHERWIN WILLIAMS	-	-	-	SHIEN; SEMI-GLOSS

WALL FURNISHINGS LEGEND

(A1)	6'-0" X 4'-0"	MARKER BOARD
(A2)	12'-0" X 4'-0"	MARKER BOARD
(B1)	24" X 36"	MIRROR
(B2)	48" X 72"	MIRROR
(C1)	24" X 72"	WALL PADDING
(C2)	18" X 72"	I-BEAM WALL PADDING
(C3)	10" X 132"	CROSS BEAM WALL PADDING
(D)	8" X 8"	SIGNAGE, SEE SHEET A004
(E)	SEE WINDOW TYPES	MANUAL WINDOW SHADES - SEE SPECS
(F)	SEE WINDOW TYPES	MOTORIZED WINDOW SHADES - SEE SPECS

NOTE: COORDINATE FINAL LOCATION WITH OWNER AND ARCHITECT PRIOR TO INSTALLATION
* ALL SHADES IN MAIN AND AUXILIARY GYMS TO BE 1% TRANSMISSION, ALL OTHERS TO BE 5%

GENERAL NOTES

- GENERAL CONTRACTOR SHALL VERIFY ALL CONDITIONS AND DIMENSIONS PRIOR TO CONSTRUCTION. REPORT ANY SIGNIFICANT DISCREPANCIES TO THE ARCHITECT.
- PROVIDE 18" MINIMUM CLEAR FLOOR SPACE AT PULL SIDE OF ALL DOORS. PROVIDE MILLWORK SHOWN FOR CLARITY. PROVIDE FLOORING UNDER EQUIPMENT, MILLWORK AND COUNTERTOPS.
- SEE INTERIOR ELEVATIONS ON A850 SHEETS AND MILLWORK DETAILS ON A550 SHEETS
- FINAL FINISH SELECTION TO BE COORDINATED WITH ARCHITECT, OWNER AND INTERIOR DESIGNER.
- CONTRACTOR TO VERIFY TRANSITION STRIP DIMENSIONS WITH MATERIAL THICKNESS.
- SEE ELECTRICAL SHEETS FOR LOCATIONS OF OUTLETS, SWITCHES, DATA, TELEPHONE, TELEVISION, INTERCOMES, CLOCKS, SPEAKERS, HORNS, STROBES, ETC.
- PROVIDE 3" DIAMETER HOLE THRU CENTER TOP AT ALL POWER AND DATE OUTLETS BELOW CABINET. PROVIDE 3MM PVC SLEEVE AROUND OPENING. COORDINATE WITH ELECTRICAL SHEETS. DRILL OPENING AFTER MILLWORK AS BEEN INSTALLED FOR ACCURATE LOCATION WITH ELECTRICAL.
- FINAL LOCATION OF ALL RESTROOM EQUIPMENT TO BE COORDINATED WITH OWNER PRIOR TO INSTALLATION.
- CHAMFER ALL EXPOSED CORNERS ON COUNTERTOPS.
- ALL WINDOWS TO RECEIVE SOLID SURFACE SILLS. SEE A802 & SPECIFICATIONS FOR FINISH DETAILS.
- PROVIDE STAINLESS STEEL CORNER GUARDS AT ALL DRYWALL CORNERS PER DETAIL D4/A560.
- PROVIDE SCHULTER TRIM PIECE ON ALL EXPOSED TILE EDGES AND EXTERIOR CORNERS. SEE SPECIFICATIONS
- ALL ROOMS TO RECEIVE ROOM SIGNS AT EACH ENTRY INTO SPACE. PLAN FOR APPROPRIATE AMOUNT PER ROOM.
- A PRE-INSTALLATION MEETING IS TO BE SCHEDULED WITH THE OWNER, ARCHITECT, GENERAL CONTRACTOR, GYMNASIUM EQUIPMENT SUBCONTRACTOR, AND THE MULTI-PURPOSE ROOM FLOORING SUBCONTRACTOR TO COORDINATE THE LAYOUT AND INSTALLATION OF THE GYMNASIUM EQUIPMENT AND THE FLOOR GAME LINES.
- PROVIDE FLOOR TRANSITION STRIPS AT ALL FLOOR MATERIAL TRANSITIONS PER DETAILS. SHEETS A550.

PROJECT TITLE AND ADDRESS

CCHS FIELDHOUSE & SOCCER FIELD

12945 SOUTH 700 EAST
DRAFTER, UTAH 84020

REVISIONS

NO.	DESCRIPTION	DATE
3	ADDENDUM #4	10/09/2024
4	ADDENDUM #5	10/11/2024

PROJECT INFORMATION
DATE: SEPTEMBER 12, 2024
PROJECT #: 24-013
PM / PA: KJM
PIC: CLL

DRAWING SET STATUS

BID SET

THIS DRAWING SET IS INTENDED TO BE PRINTED IN COLOR

SHEET TITLE

ALTERNATE - FINISHINGS PLANS

SHEET NUMBER

A980

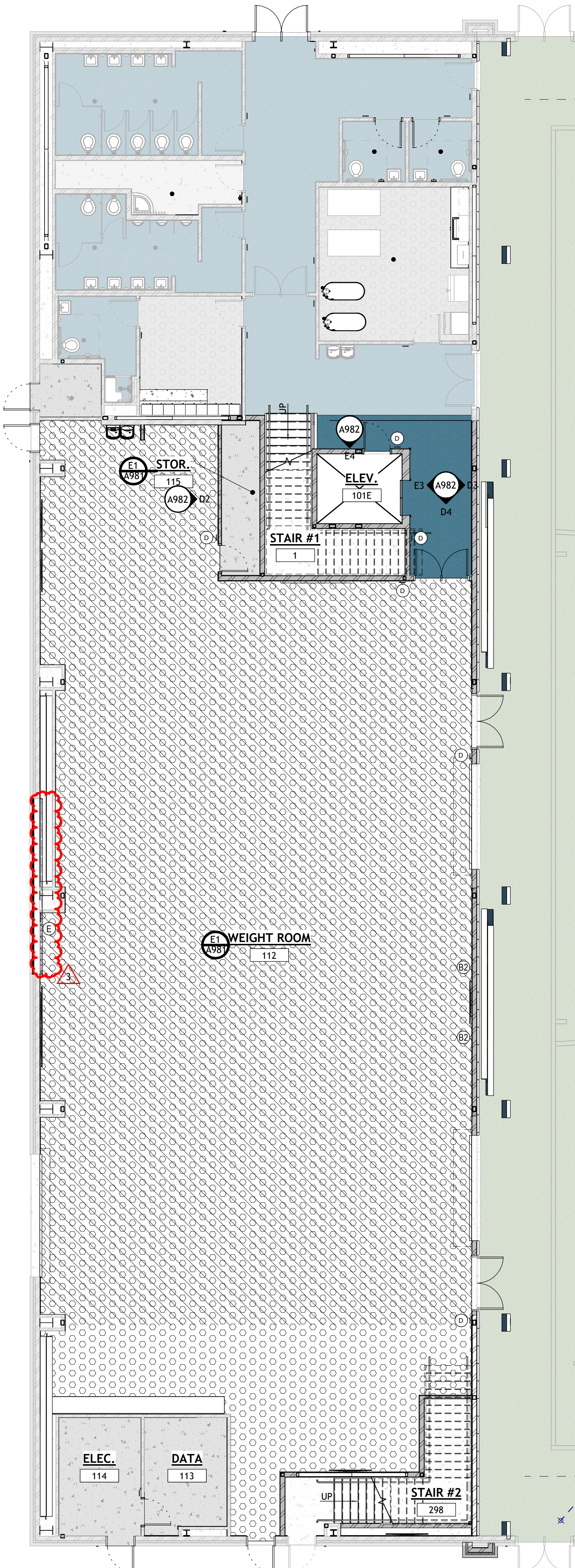
A

B

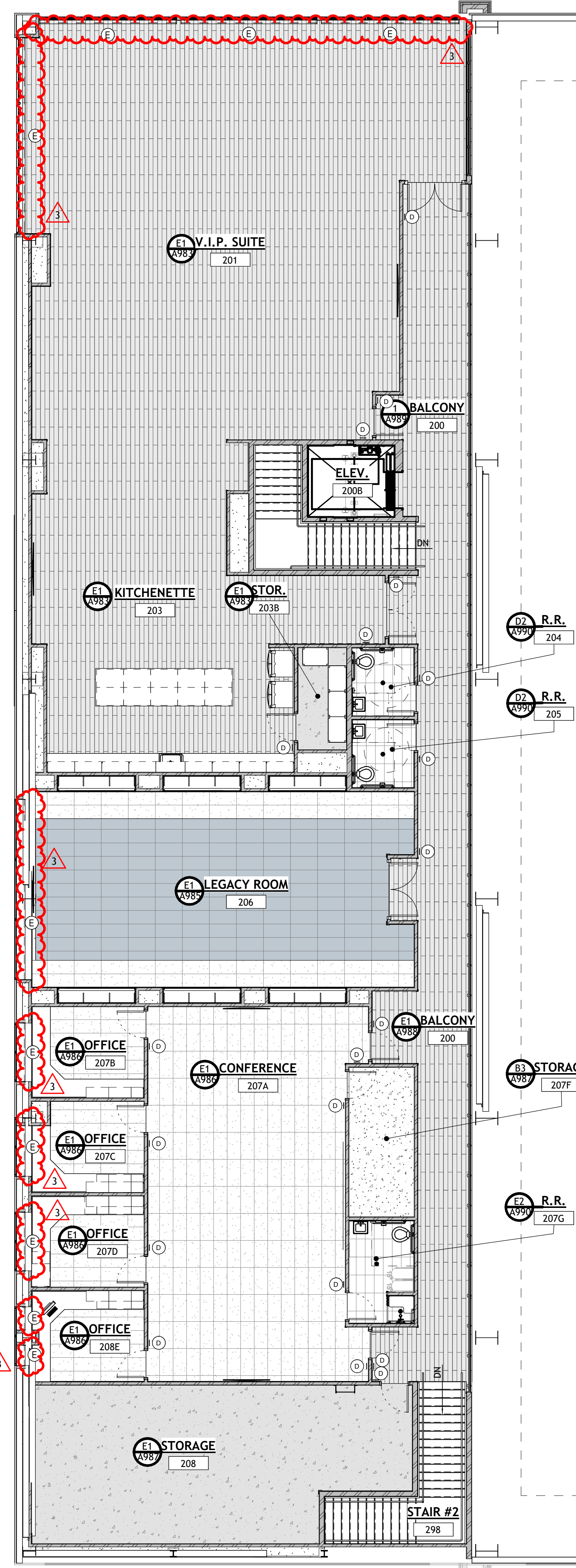
C

D

E



MAIN FLOOR FINISHINGS PLAN - ALTERNATIVE
A980 | SCALE: 1/8" = 1'-0"



UPPER FLOOR FINISHINGS PLAN - ALTERNATIVE
A980 | SCALE: 1/8" = 1'-0"

Corner Canyon High School
Fieldhouse & soccer Fields
Canyons School District

MECHANICAL ADDENDUM 05

October 11, 2024

Revisions to the Specifications:

<i>Item:</i>	<i>Section #:</i>	<i>Description:</i>
5.1	220000-2.5.C	Add exposed hose bibbs under lavatory.
HB-3	Hose Bibb:	Chicago Faucet No. 952 (No. 998 where connected to exposed piping) 3/4" chrome plated hose bibb with No. 293-6 handle and 3/4" threaded outlet with integral vacuum breaker.
5.2	220000-2.5.C	Add 2-compartment counter mounted sink.
S-2	Sink:	Elkay PSR-3319 33" x 19-1/2" x 7" deep with (2) each 14" x 14" bowls, 20 ga. stainless steel self-rimming sink, soft satin finish with 2-hole flush fittings deck and sound dampening. Single lever Chicago 1100-L9-317ABCP 8" swing spout kitchen deck faucet, and vandalproof aerator, flexible supplies, crumb cup strainer with the tailpiece and cast brass P-trap.

APPROVED MANUFACTURERS' PRODUCTS:

N/A

Revisions to the Drawings:

<i>Item:</i>	<i>Sheet #:</i>	<i>Description:</i>
5.1	P501	Plumbing Fixture Schedule - Added S-2, F-1, HB-3

Attachments:

Drawings

- P501

End of Addendum 05



NO.	DESCRIPTION	DATE
2	ADDENDUM 05	10/11/24

DATE: SEPTEMBER 12, 2024
PROJECT #: 24-013
PM / PA: KJM
PIC: CLL

THIS DRAWING SET IS INTENDED TO BE PRINTED IN COLOR

PLUMBING EQUIPMENT SCHEDULE

[WH-1] WATER HEATER: ELECTRIC, PACKAGED TYPE, 74 GALLONS PER HOUR RECOVERY THRU 100°F TEMP. RISE. HEATER SHALL BE 50 GALLON, FACTORY INSULATED HOT WATER STORAGE TANK WITH ASME RATED GLASS LINED TANK. COMPLETE WITH P & T RELIEF VALVE, FACTORY WIRED AND TESTED. UPPER AND LOWER LIMIT OPERATING THERMOSTATS, COMBINATION HIGH AND LOW PRESSURE SAFETY CONTROLS AND ALL CONTROLS FOR AUTOMATIC OPERATION. SET AT 120°F. POWER: 480/3/60, 2 ELEMENTS AT 4500 WATTS EACH. TOTAL FLA @ 480/3/60 = 16.2 A. DIMENSIONS: 47-1/2"H x 22" DIA. WEIGHT: 140 LBS. MANUFACTURER: BRADFORD WHITE. MODEL: E32-50S-3

[CP-1] PUMP: IN-LINE RECIRCULATING, 120 DEG. F. WATER, 2.0 GPM AT 15 FT. HEAD, 1/6 H.P., 120/1/60, 1750 RPM, 3/4" CONNECTIONS. ALL BRONZE CONSTRUCTION. MANUFACTURER: BELL & GOSSETT. SERIES PR. MODEL: E32-50S-3

[EX-1] EXPANSION TANK: BLADDER TYPE, DOMESTIC 120° HOT WATER, 12.5 GAL. TOTAL VOLUME, 10.0 GALLONS ACCEPTANCE VOLUME, FACTORY AIR CHARGE 55 PSI, 16-1/4" DIA. x 17-1/4" HIGH. COMPLETE WITH STEEL SHELL AND HEAVY DUTY BUTYL DIAPHRAGM. MANUFACTURER: AMTROL. PUMP: AST-30

PLUMBING FIXTURE SCHEDULE

SYMBOL	FIXTURE	WASTE	VENT	C.W.	H.W.	TEMP. W.	NOTES (1)
	WATER CLOSET	4"	2"	1"	--	--	WALL MOUNTED - FLUSH VALVE
	WATER CLOSET	4"	2"	1"	--	--	WALL MOUNTED - FLUSH VALVE (ADA)
	WATER CLOSET	4"	2"	1"	--	--	FLOOR MOUNTED - SENSOR FLUSH (ADA)
	URINAL	3"	2"	1"	--	--	WALL MOUNTED - SENSOR FLUSH
	URINAL	3"	2"	1"	--	--	WALL MOUNTED - SENSOR FLUSH (ADA)
	LAVATORY	1-1/2"	1-1/2"	1/2"	1/2"	1/2"	WALL MOUNTED - (ADA) WASSE TV-1
	SINK	1-1/2"	1-1/2"	1/2"	1/2"	--	COUNTER MOUNTED
	SINK	1-1/2"	1-1/2"	1/2"	1/2"	--	2-COMPARTMENT COUNTER MOUNTED
	SHOWER	--	--	1/2"	1/2"	--	WALL MOUNTED W/ SLIDE BAR (ADA)
	SERVICE SINK	3"	2"	3/4"	3/4"	--	FLOOR MOUNTED
	FILL FAUCET	--	--	1/2"	1/2"	--	WALL MOUNTED
	DRINKING FOUNTAIN	1-1/2"	1-1/2"	1/2"	--	--	WALL MOUNTED - 6" LEVEL WITH BOTTLE FILLER ON LOW SIDE 120/1/60
	HOSE BIBB	--	--	3/4"	--	--	EXTERIOR NON-FREEZE (2)
	HOSE BIBB	--	--	3/4"	--	--	INTERIOR WALL BOX (TOILET ROOMS)
	HOSE BIBB	--	--	3/4"	--	--	INTERIOR W/ INTEGRAL VACUUM BREAKER (TOILET ROOMS)
	TEMPERING VALVE	--	--	1/2"	1/2"	1/2"	SINGLE-FLY-NOSE 100- MOUNT UNDER LAVATORY
	ICE MAKER BOX	--	--	1/2"	--	--	SEE DETAIL 8/P602
	FLOOR DRAIN	2"	1-1/2"	--	--	--	W/ DEEP SEAL TRAP AND ASSE TRAP GUARD
	SHOWER DRAIN	2"	2"	--	--	--	W/ DEEP SEAL TRAP AND ASSE TRAP GUARD
	FLOOR SINK	2"	2"	--	--	--	12"x12" PROVIDE GRATE
	ROOF DRAIN PRIMARY	--	--	--	--	--	SEE PLANS FOR SIZE
	ROOF DRAIN SECONDARY	--	--	--	--	--	SEE PLANS FOR SIZE
	DOWN SPOUT NOZZLE	--	--	--	--	--	SEE PLANS FOR SIZE

NOTES:
(1) CONTRACTOR SHALL VERIFY EXACT LOCATION OF ALL PLUMBING FIXTURES AND DRAINS WITH ARCHITECTURAL DRAWINGS PRIOR TO ROUGH-IN OR INSTALLATION.
(2) 12" LENGTH. CENTER BASIN IN BLOCK COURSE.

BRANCH WATER LINE SCHEDULE

FIXTURE	FIXTURE UNITS	TOTAL QUANTITY OF FIXTURES SERVED BY A GIVEN PIPE SIZE					
		1/2"	3/4"	1"	1 1/4"	1-1/2"	2"
WATER CLOSET	10	--	--	1	2	3	8
URINAL	5	--	--	1	2	3	20
LAVATORY	2	1	3	5	7	15	50
SERVICE SINK	4	--	1	2	3	7	25
DRINKING FOUNTAIN	1	2	6	10	15	30	--
HOSE BIBB	3	--	1	3	5	10	33
WALL HYDRANT	3	--	1	3	5	10	33
TOTAL FIXTURE UNITS SERVED BY PIPE SIZE	2	6	10	15	30	100	

NOTE:
MINIMUM PIPE SIZE TO ANY FIXTURE TO BE 1/2" WHERE PIPE SIZE IS SHOWN ON DRAWINGS. IT SHALL BE FOLLOWED. IN THE EVENT PIPE SIZES ARE NOT SHOWN, THE SIZE OF ANY BRANCH LINE SHALL BE DETERMINED BY USING THIS TABLE. FIND SUM OF TOTAL FIXTURE UNITS ON BRANCH LINE, THEN REDUCE TOTAL BY SUBTRACTING OFF INDIVIDUAL FIXTURE UNITS FOR EACH SUCCESSIVE FIXTURE ALONG THE BRANCH LINE.

PLUMBING PIPING LEGEND

DESCRIPTION	SYMBOL
WASTE (BELOW GRADE)	-----
VENT	-----
COLD WATER	-----
HOT WATER (120 DEG.F.)	-----
HOT WATER RECIRCULATING (120 DEG.F.)	-----
TEMPERED WATER	-----T-----
GAS 4 OUNCE	-----G-----4oz-----
GAS (5LB)	-----G-----5#-----
DRAIN	-----D-----
PRIMARY ROOF DRAIN	-----RD-----
SECONDARY ROOF DRAIN	-----SRD-----

1 | 2 | 3 | 4 | 5 | 6 | 7

A

B

C

D

E