

ADDENDUM NO. 2

April 16, 2018

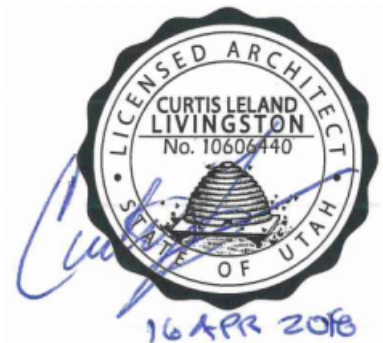
TO THE PLANS AND PROJECT MANUAL FOR

Park Lane Elementary Front Office Remodel and Day Lighting

Prepared by:



**233 South Pleasant Grove Blvd.
Suite 105
Pleasant Grove, Utah 84062
(801) 769-3000 Office
(801) 769-3001 Fax**



This addendum is hereby made a part of the contract documents. It shall be the responsibility of each Contractor to notify his subcontractors of the contents of this addendum. In case of conflict between drawings, specifications and the Addendum, this Addendum shall govern. All changes, corrections, deletions and/or additions to the initial bidding documents shall be included in the bid.

ADDENDUM NO. 2

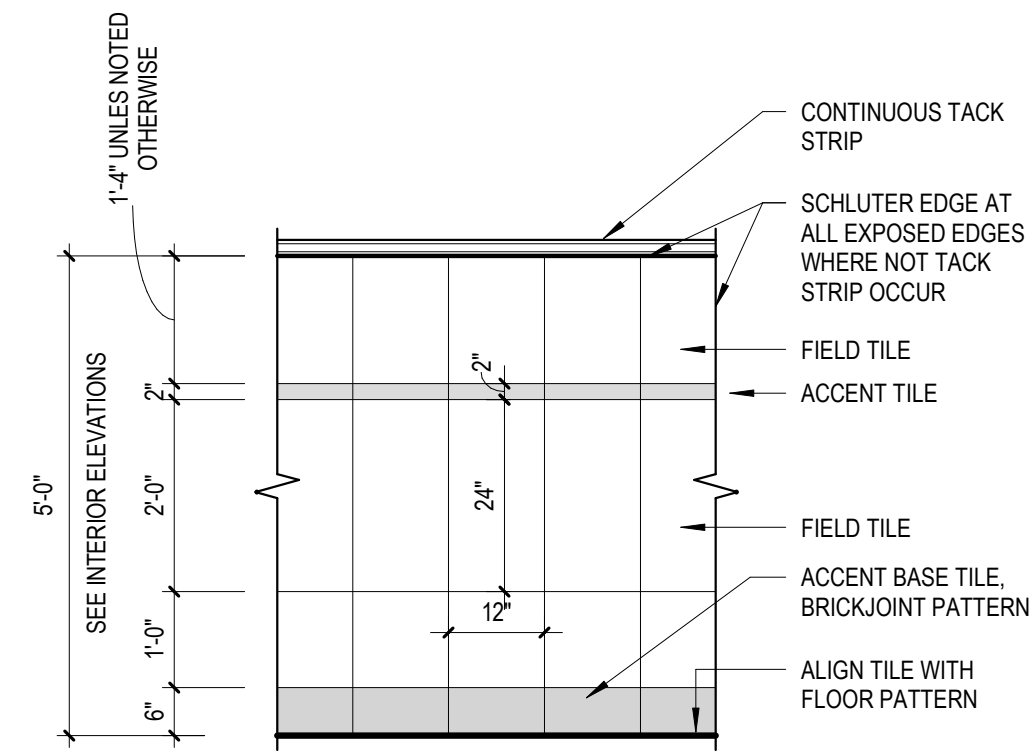
April 16, 2018

Architectural Items

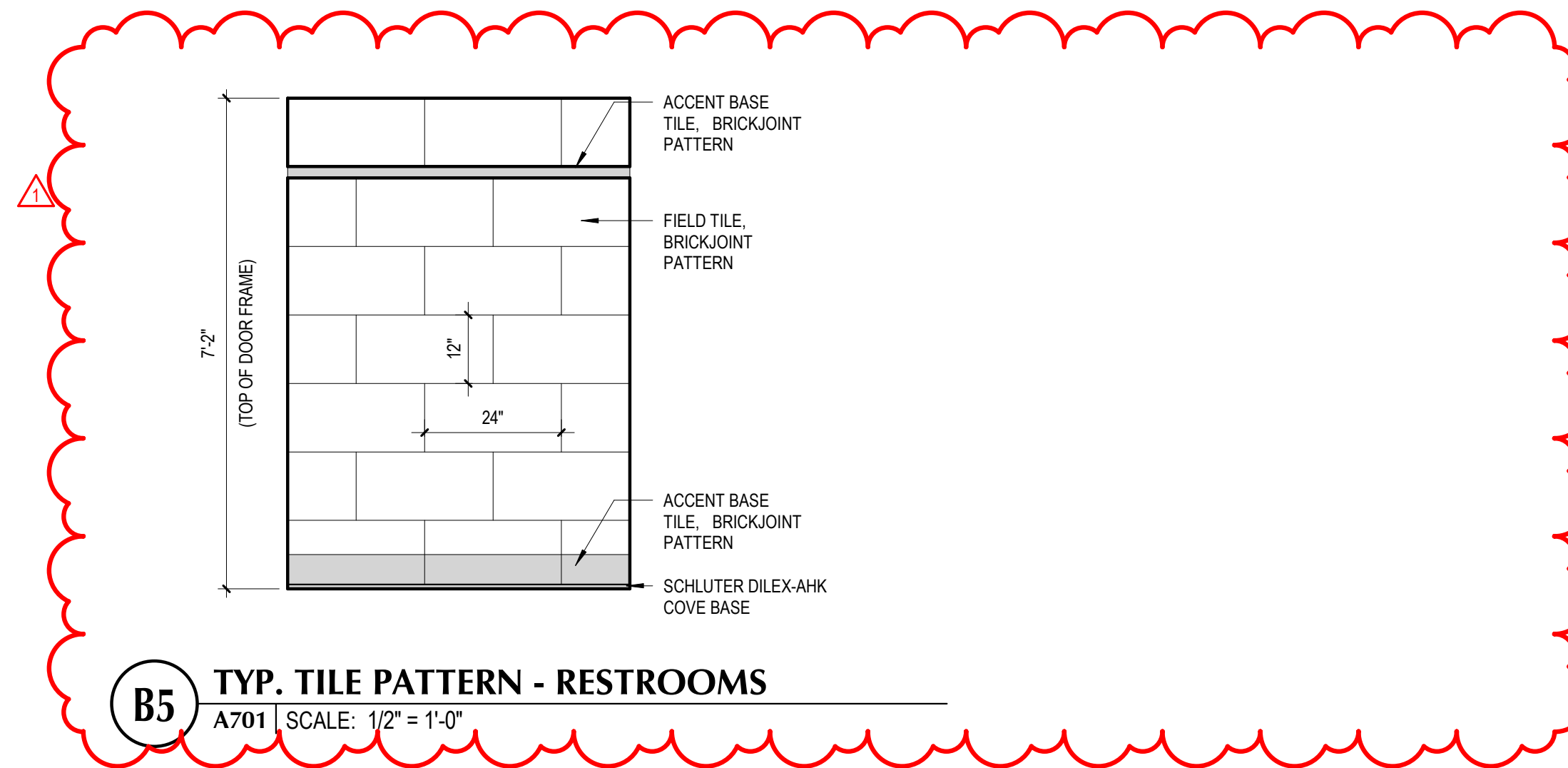
1. **Sheet A102 – FINISH SCHEDULE / LEGEND:**
F3 – DAL TILE, City View - 12x24 – PORCELAIN – Field & Accent
B3 – DAL TILE, City View - 12x24 – Cove base - Accent
W3 – DAL TILE, Fabrique - 12x24 – PORCELAIN – Field & Accent
2. **Sheet A252:** See the attached revised sheet for items noted by revision cloud Mark.
3. **Sheet A701:** See the attached revised sheet for items noted by revision cloud Mark.

END OF ADDENDUM

MARK	REVISION	DATE
1	ADDENDUM #2	16 APRIL 2018

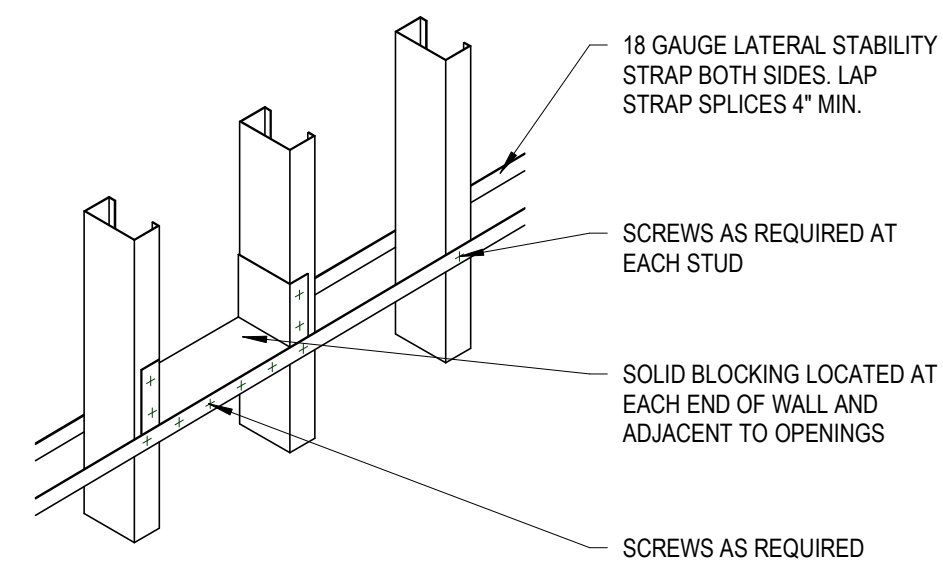


B2 TYP. TILE PATTERN - CORRIDOR
A701 | SCALE: 1/2" = 1'-0"

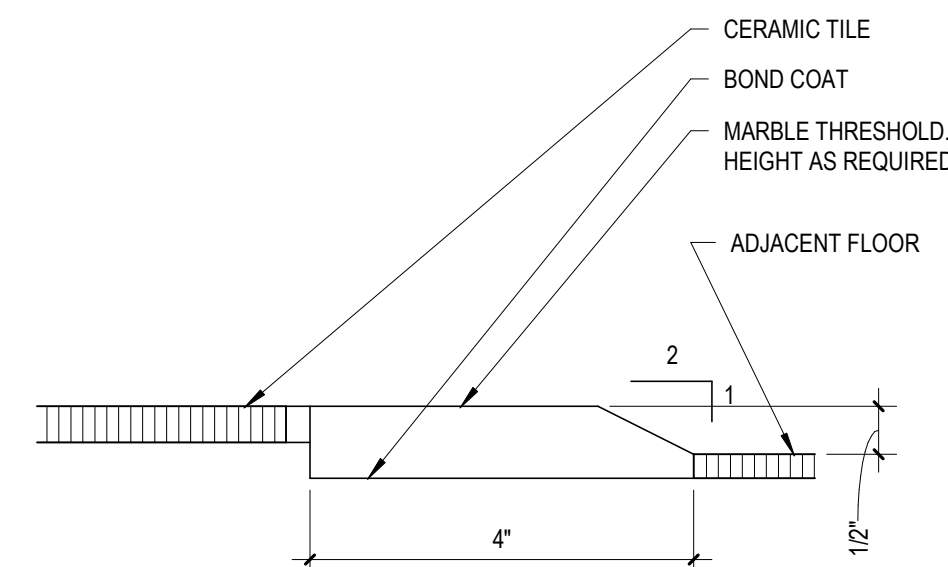


B5 TYP. TILE PATTERN - RESTROOMS
A701 | SCALE: 1/2" = 1'-0"

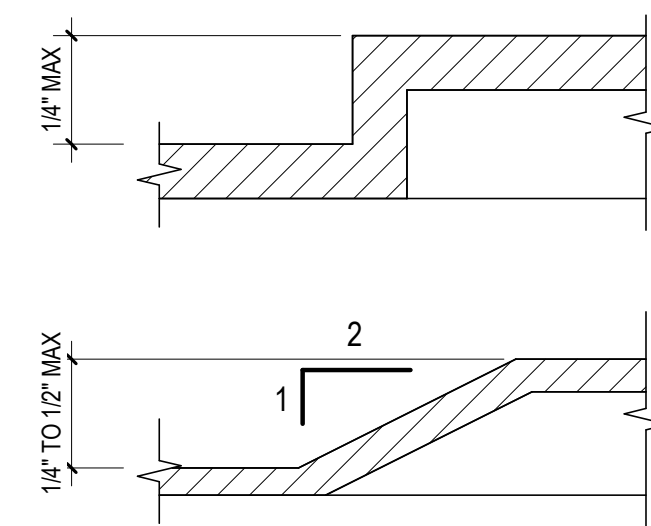
NOTE: ALL METAL STUD FRAMING TO BE IN ACCORDANCE WITH AMERICAN IRON AND STEEL INSTITUTE STANDARDS.



C1 METAL STUD BLOCKING DETAIL
A701 | SCALE: NOT TO SCALE

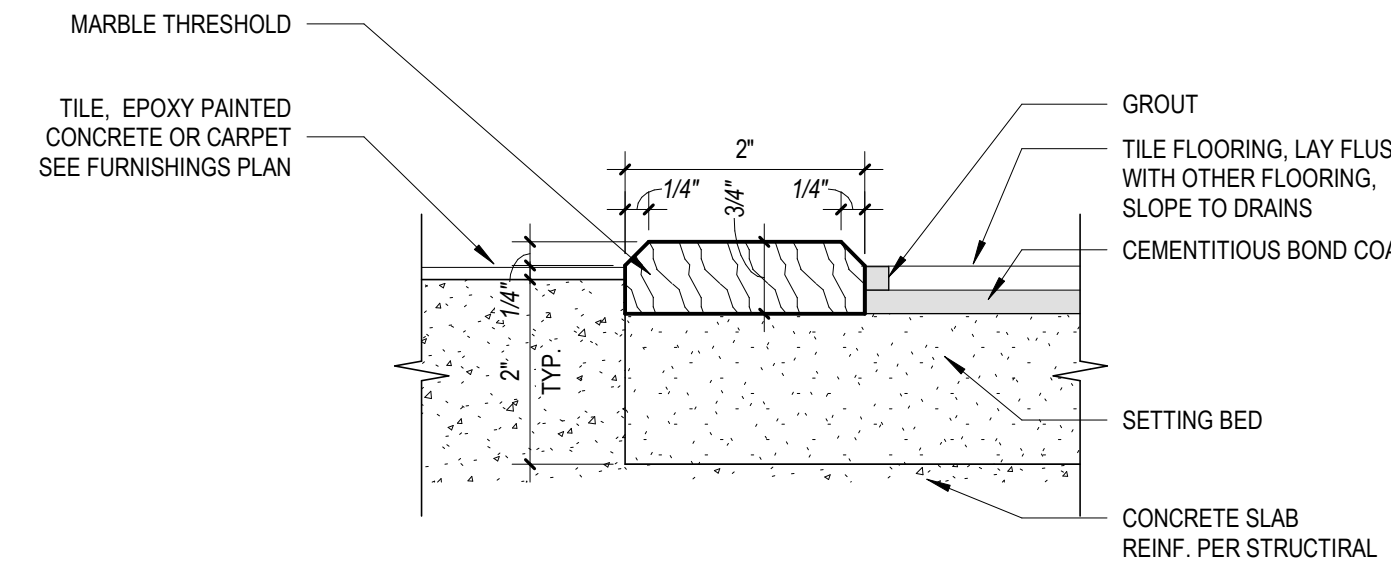


C2 FLOOR TRANSITIONS
A701 | SCALE: 6" = 1'-0"



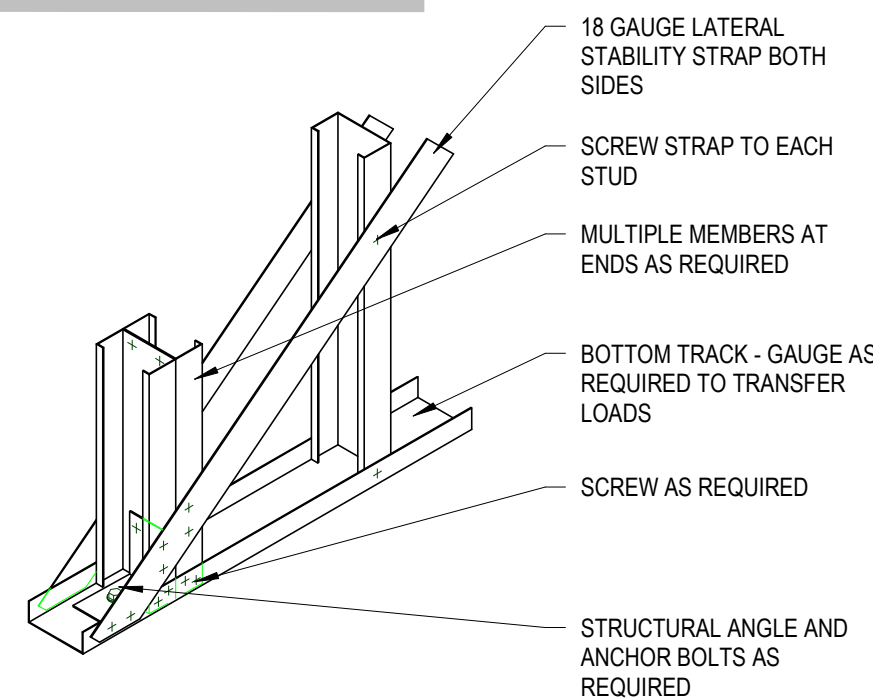
NOTE: CHANGES IN LEVEL GREATER THAN 1/2" MUST BE RAMPED WITH 1:12 MAXIMUM SLOPE. CHANGES IN LEVEL IN CLEAR FLOOR SPACE, MANEUVERING CLEARANCES, WHEELCHAIR TURNING SPACE AND ACCESS AISLES ARE PROHIBITED.

C4 FLOOR TRANSITIONS
A701 | SCALE: 1/4" = 1'-0"



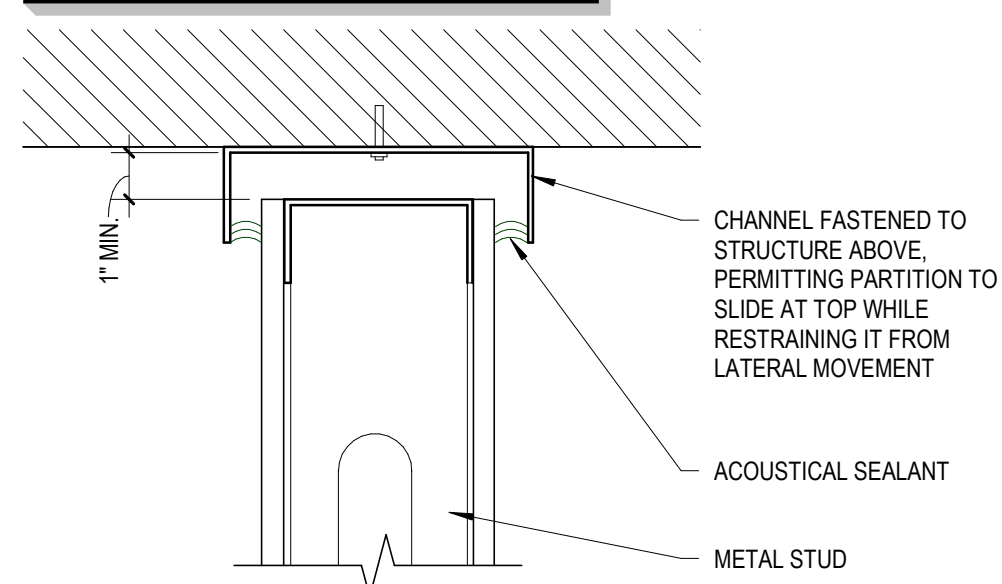
C5 TYP. MARBLE TRESHOLD DETAIL
A701 | SCALE: 6" = 1'-0"

NOTE: ALL METAL STUD FRAMING TO BE IN ACCORDANCE WITH AMERICAN IRON AND STEEL INSTITUTE STANDARDS.



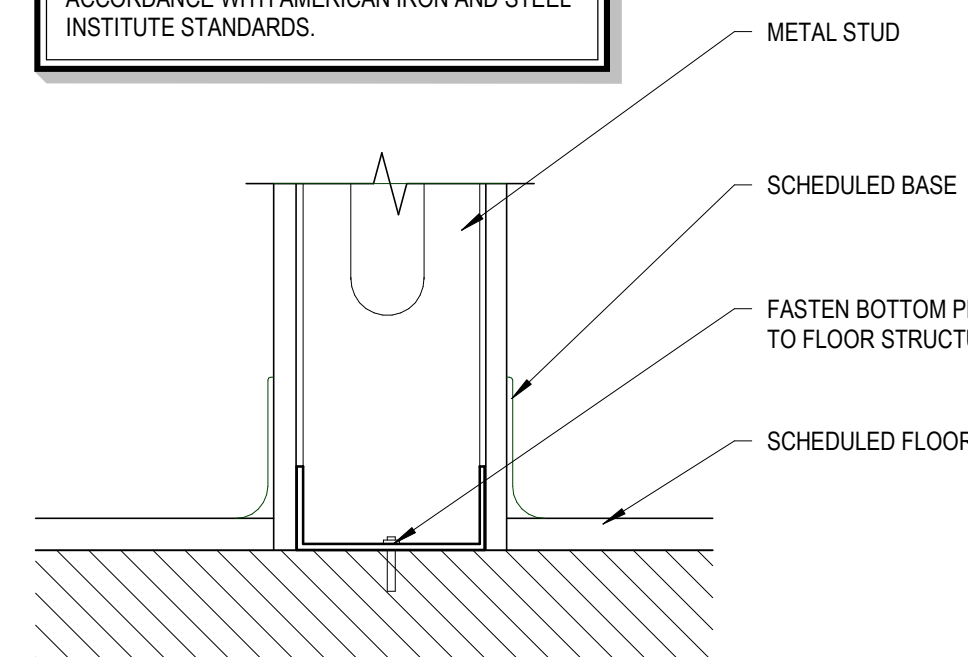
D1 METAL STUD STRAP DETAIL
A701 | SCALE: NOT TO SCALE

NOTE: ALL METAL STUD FRAMING TO BE IN ACCORDANCE WITH AMERICAN IRON AND STEEL INSTITUTE STANDARDS.

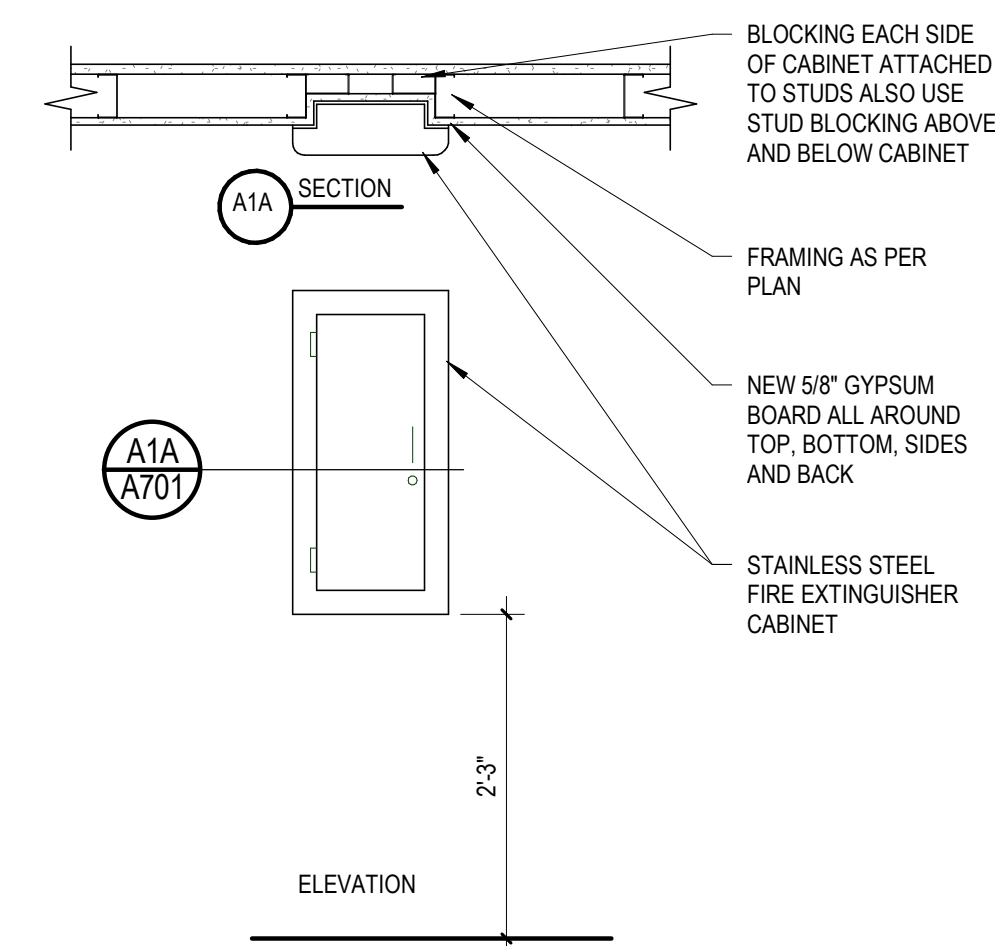


D2 WALL DEFLECTION DETAIL
A701 | SCALE: NOT TO SCALE

NOTE: ALL METAL STUD FRAMING TO BE IN ACCORDANCE WITH AMERICAN IRON AND STEEL INSTITUTE STANDARDS.



D4 WALL TO FLOOR DETAIL
A701 | SCALE: NOT TO SCALE



D5 SEMI RECESSED FIRE EXTINGUISHER
A701 | SCALE: 3/4" = 1'-0"

C:\01_CMAA01_Local Files\17-006 Canyons School District - Multi-Elementary Office Upgrades\201802 - Park Lane Elementary\17-006 Park Lane Elementary Office Upgrade 2018.3.9_MENDOZA.rvt 4/16/2018 2:24:05 PM

<p>233 SOUTH PLEASANT GROVE BLVD. SUITE #105 PLEASANT GROVE, UTAH 84062 PHONE: (801) 769-3000 FAX: (801) 769-3001 cma@cmaidah.com</p>	<p>DATE: 30 MAR 2018 PROJECT #: CMA 17-006.2 PROJ. MAN.: CLL CHECKED BY: KWM</p>
	<p>PROJECT: PARK LANE ELEMENTARY OFFICE REMODEL 9955 EASTDELL DRIVE SANDY, UTAH 84092</p>
<p>SHEET DESCRIPTION: MISCELLANEOUS DETAILS</p>	<p>SHEET: A701</p>

BID DOCUMENTS